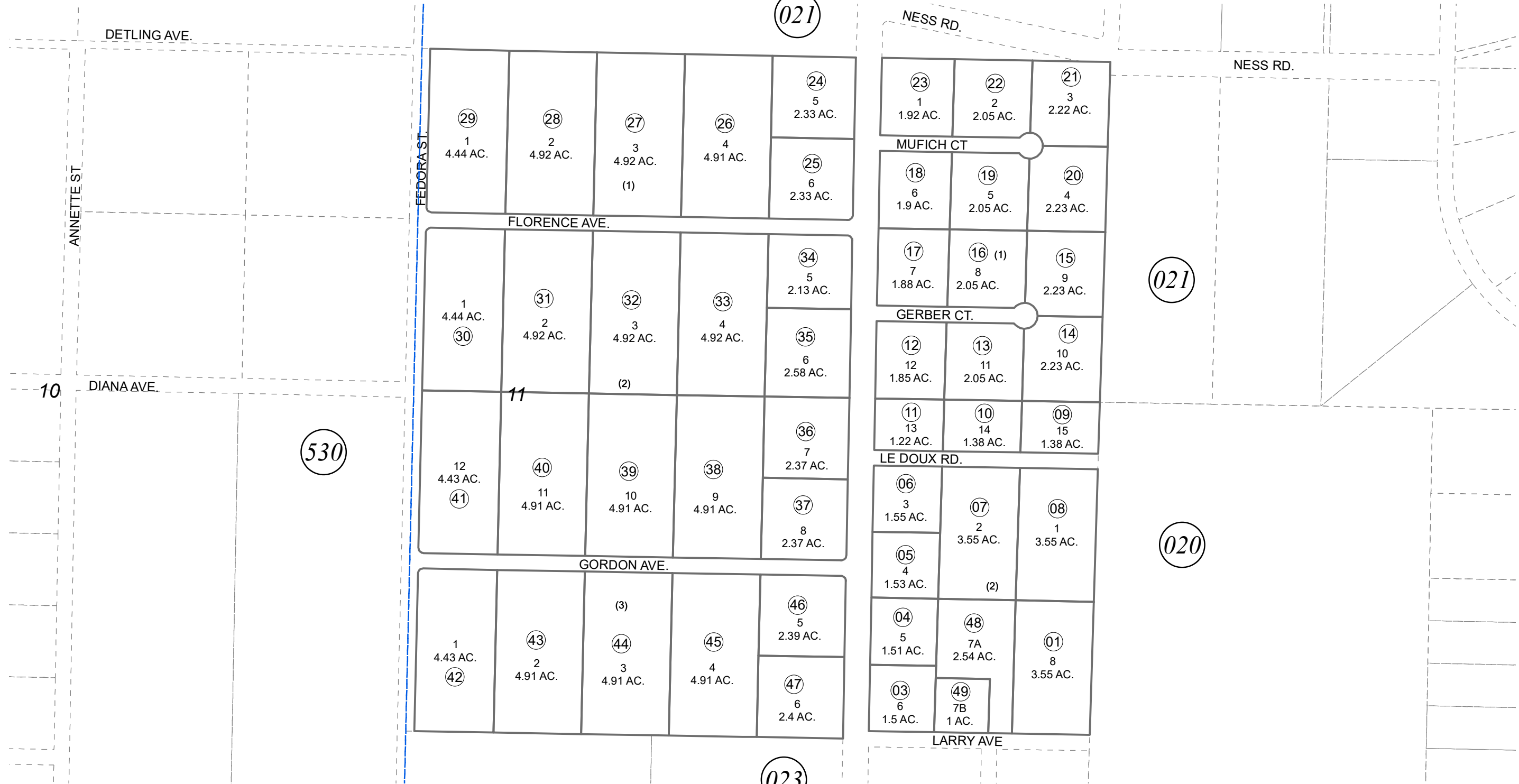


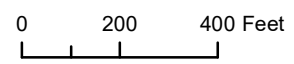
POR. SEC. 11, T03N, R12W, S.M.

133-340



OCTOBER 10, 2022

For 2023 assessment roll		
Delete	Add	Revise
To		
02	48,49	



Assessor's Map
Kenai Peninsula Borough

COHOE ESTATES SUB ADDN NO 1 KN0001646
COHOE ESTATES SUB 2021 ADDN KN2022056

This map is prepared for Kenai Peninsula Borough Assessing Dept. use only and is not intended for conveyance nor is it a survey.
Note- Assessor's block Numbers Shown in Ellipses
Assessor's Parcel Numbers Shown in Circles