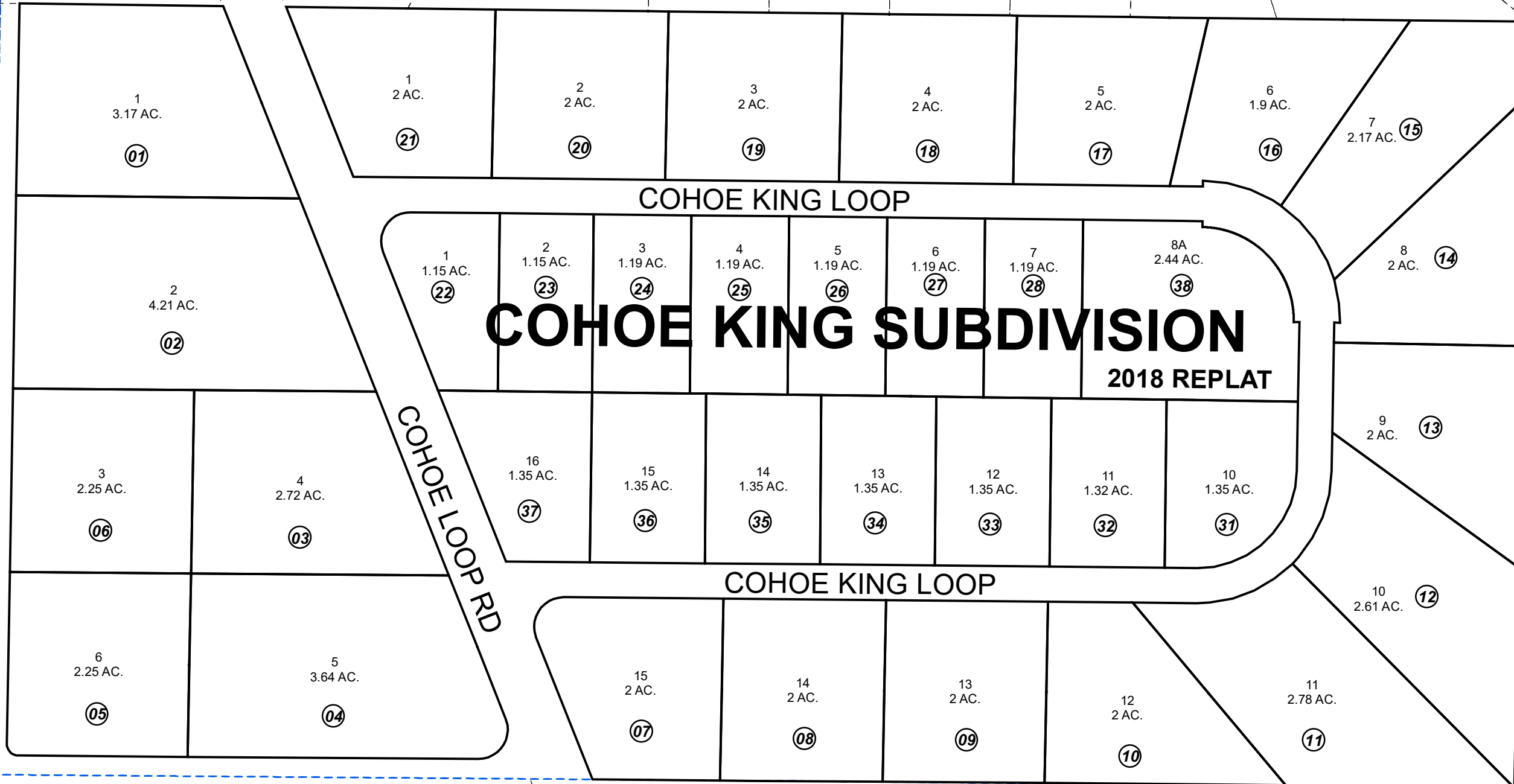


S 1/2 SW 1/4 SEC. 25, T03N, R12W, S.M.

133-481

480



COHOE KING SUBDIVISION

2018 REPLAT

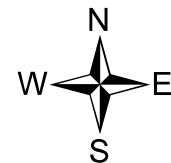
110

110

110

110

AURORA AVE.



0 50 100 200 Feet

DECEMBER 13, 2018

For 2019 assessment roll		
Delete	Add	Revise
To		
29,30	38	

Assessor's Map
Kenai Peninsula Borough

KN0850139 COHOE KING SUB
KN2018071 COHOE KING SUB 2018 REPLAT

Note- Assessor's block Numbers Shown in Ellipses
Assessor's Parcel Numbers Shown in Circles

This map is prepared for Kenai Peninsula Borough Assessing Dept. use only and is not intended for conveyance nor is it a survey.