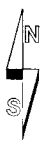
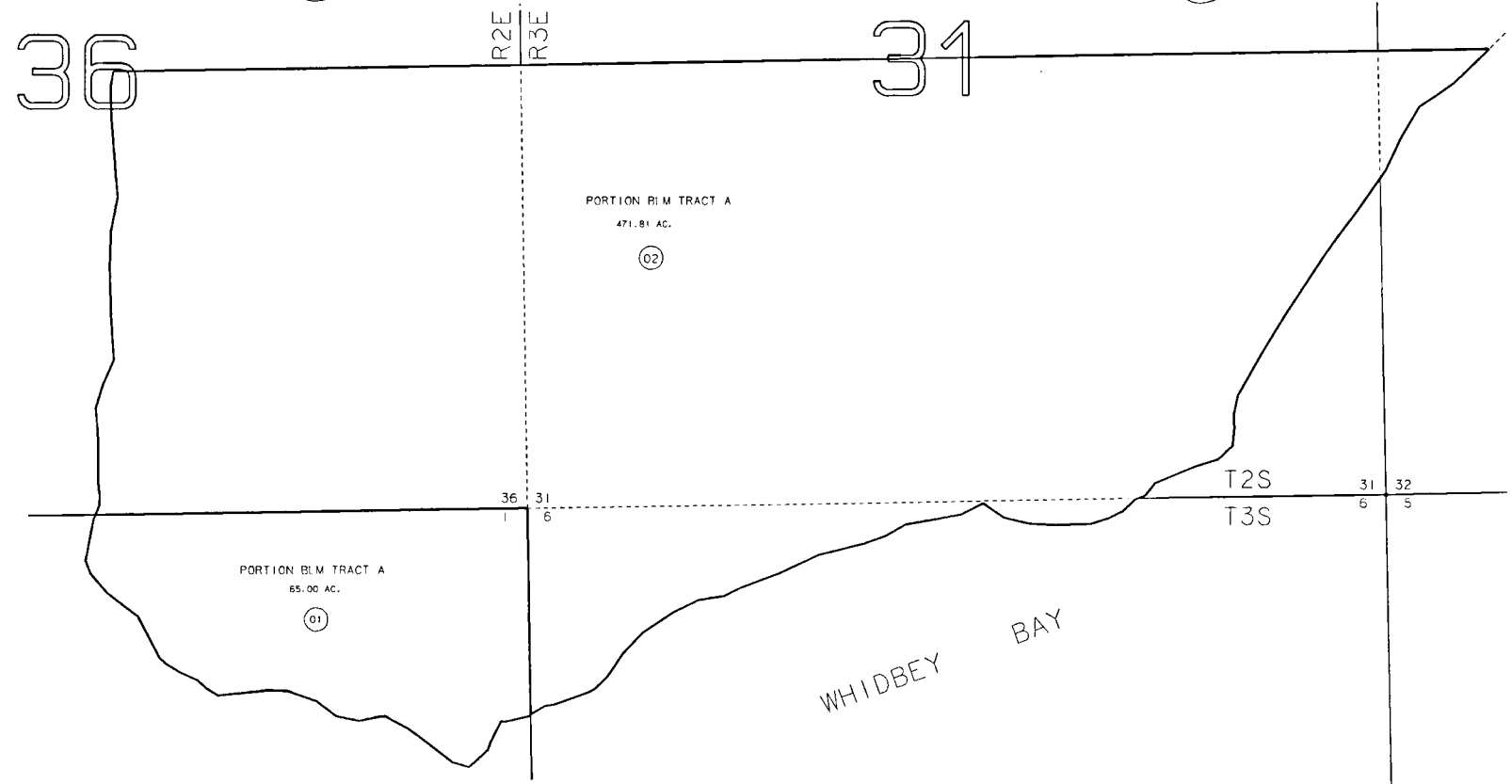


S 1/2 SECS. 31 & 32, T2S, R3E AND S 1/2 SEC. 36, T2S, R2E AND
 SEC. 1, T3S, R2E AND SEC. 6, T3S, R3E, SEWARD MERIDIAN

189-315

316

413



DATE AUGUST 23, 1993

FOR 1994 ASSESSMENT ROLL		
DELETE	ADD	REVISED
TO		
02		

NOTE - Assessor's Block Numbers Shown In Ellipses
 Assessor's Parcel Numbers Shown In Circles

Assessor's Map
 Kenai Peninsula Borough

THIS MAP IS PREPARED FOR KENAI PENINSULA BOROUGH ASSESSING DEPT. USE ONLY AND IS NOT INTENDED FOR ANY OTHER USE OR REPRESENTATION