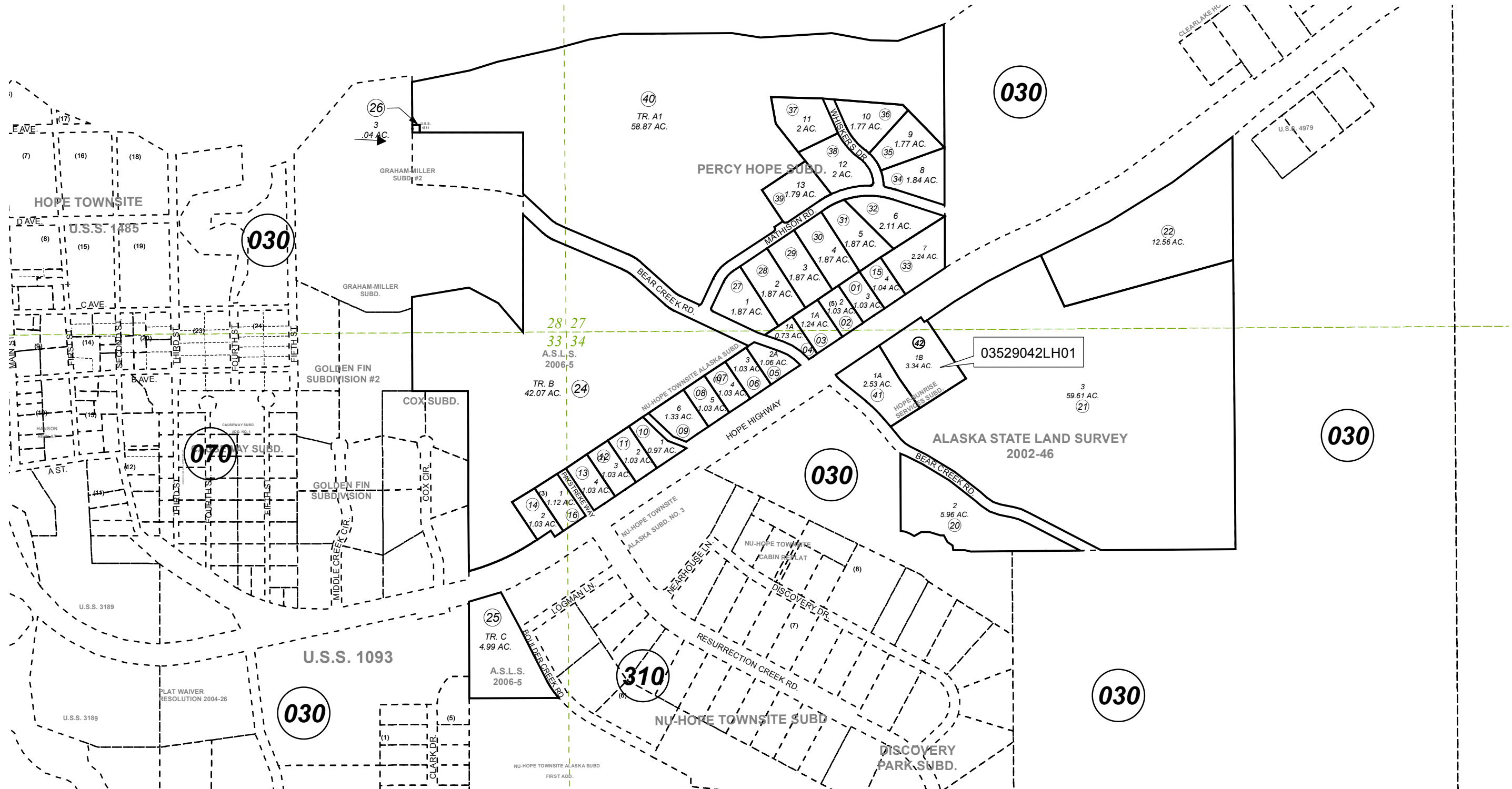


POR. SEC. 27,28,33,34, T10N, R02W, S.M.

035-290



0 300 600 Feet

FEBRUARY 1, 2019

For 2019 assessment roll

Delete	Add	Revise
--------	-----	--------

To

42LH01

Assessor's Map
Kenai Peninsula Borough

NU-HOPE TOWNSITE ALASKA SUB SW0000049
 NU-HOPE TOWNSITE ALASKA SUB NO 2 SW0830011
 ALASKA STATE LAND SURVEY 2002-46 SW2003006
 ALASKA STATE LAND SURVEY 2006-5 SW2009010
 PERCY HOPE SUB SW2010008
 HOPE - SUNRISE SERVICES SUB SW2018006

Note- Assessor's block Numbers Shown in Ellipses
Assessor's Parcel Numbers Shown in Circles

This map is prepared for Kenai Peninsula Borough Assessing Dept. use only and is not intended for conveyance nor is it a survey.