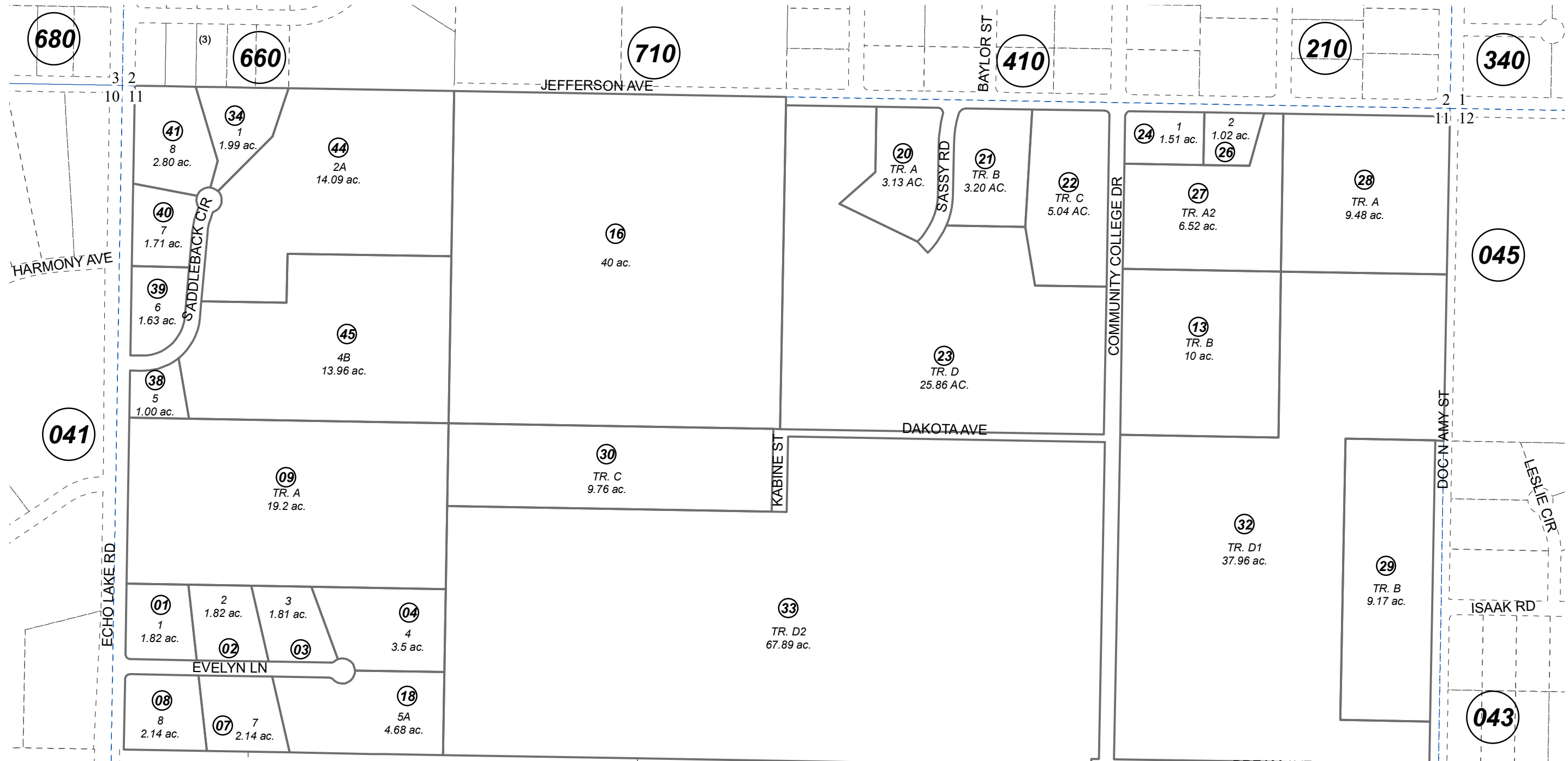


N1/2 SEC. 11, T04N, R11W, S.M.

131-044



680

660

710

410

210

340

041

045

670

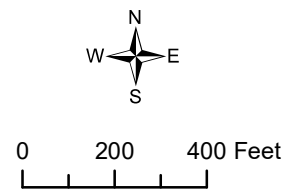
042

043

DECEMBER 2, 2022

For 2023 assessment roll		
Delete	Add	Revise
	To	
35,42,43	44,45	

MCWILLIAMS SUB KN0001570
 MCWILLIAMS SUB TRACT B VANTREASE 1984 ECHO HEIGHTS ADDN KN0840257
 ISAAK SONS SUB KN0840322
 MCWILLIAMS SUB BROWN REPLAT KN2002053
 HUDDLESTON SUB KN2004122
 HUDDLESTON SUB HIDEAWAY ADDN PART ONE KN2006080
 ISAAK SONS SUB 2011 ADDN KN2011056
 ISAAK SONS SUB 2012 ADDN KN2012038
 ISAAKS' DAUGHTERS SUB KN2013122
 ISAAKS' DAUGHTERS SUB #2 KN2015093
 SADDLE RIDGE SUB KN2017081
 SADDLE RIDGE SUB BAXTER REPLAT KN2020089
 SADDLE RIDGE SUB 2022 REPLAT KN2022072



Assessor's Map
 Kenai Peninsula Borough

This map is prepared for Kenai Peninsula Borough Assessing Dept. use only and is not intended for conveyance nor is it a survey.
 Note- Assessor's block Numbers Shown in Ellipses
 Assessor's Parcel Numbers Shown in Circles