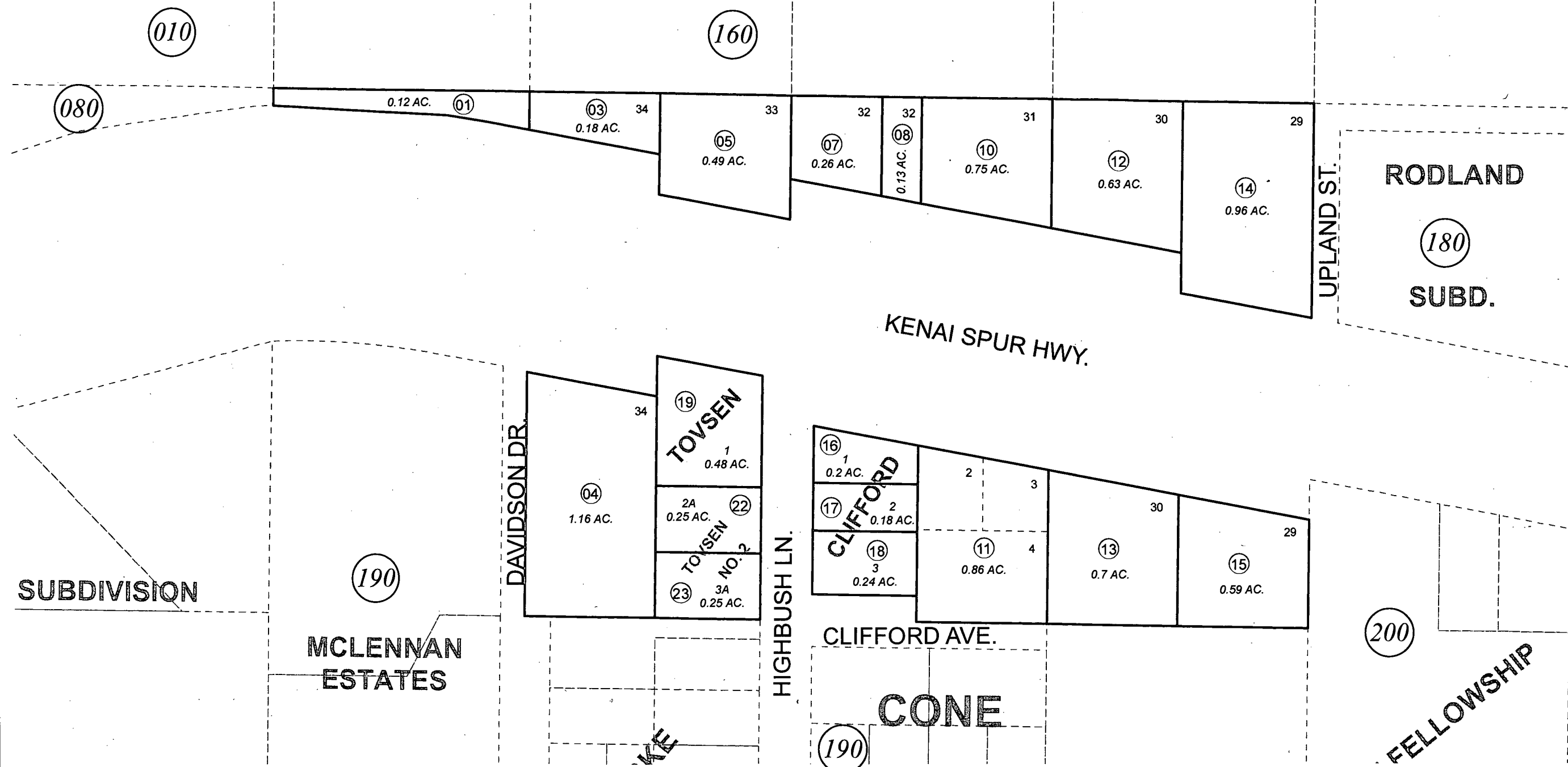


POR. SEC. 34, T06N, R11W, S.M.

045-170



SUBDIVISION

MCLENNAN ESTATES

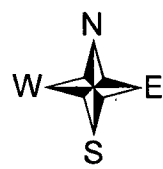
TOVSEN

CLIFFORD

CONE

FELLOWSHIP

RODLAND SUBD.



DECEMBER 7, 2012

For 2013 assessment roll		
Delete	Add	Revise
To		
02	045-190+	

Assessor's Map  
Kenai Peninsula Borough

CLIFFORD SUB KN0830104  
TOVSEN SUB KN0830214  
TOVSEN SUB NO 2 KN0860008

This map is prepared for Kenai Peninsula Borough Assessing Dept. use only and is not intended for conveyance nor is it a survey.

Note- Assessor's block Numbers Shown in Elipses  
Assessor's Parcel Numbers Shown in Circles