

017-251

E1/2 SW1/4 SEC. 1, T06N, R12W, S.M.

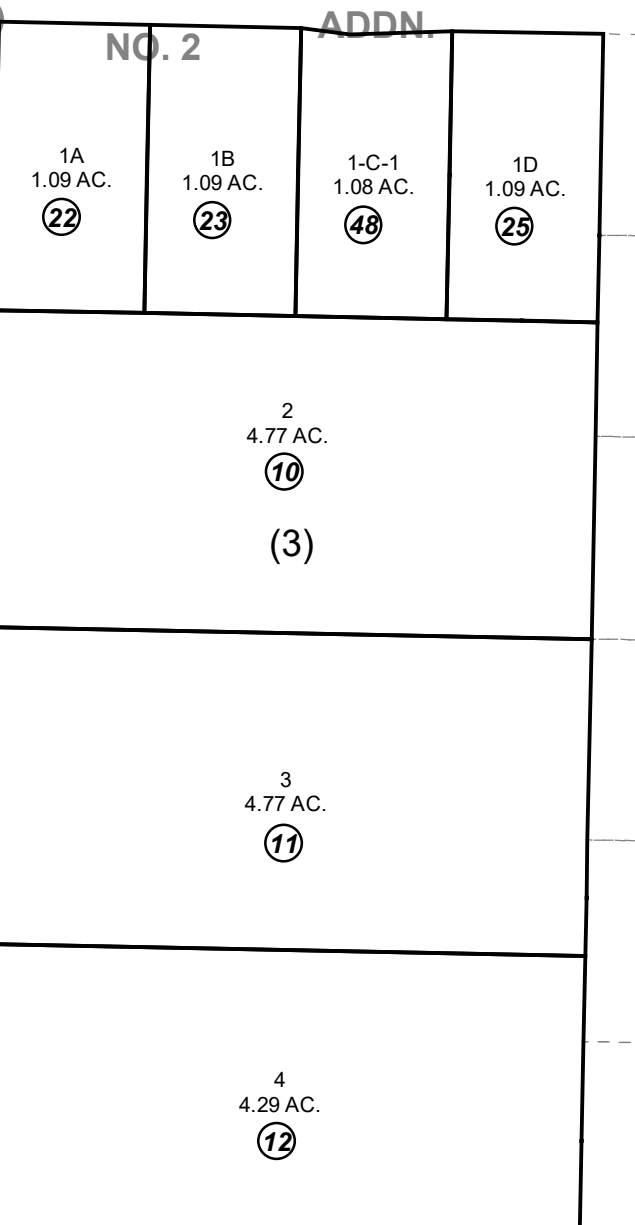
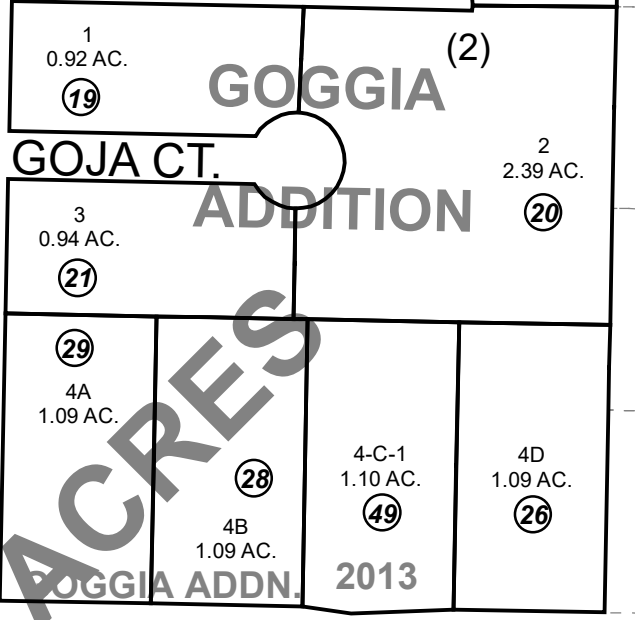
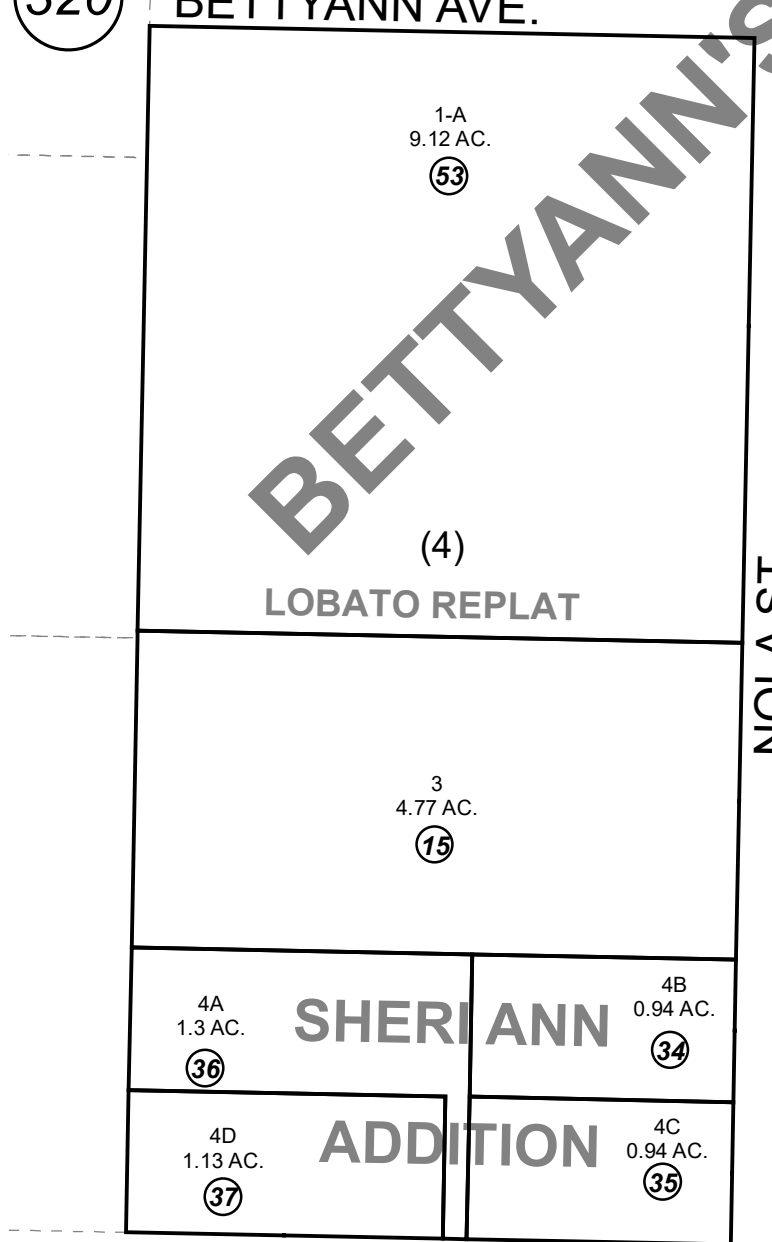
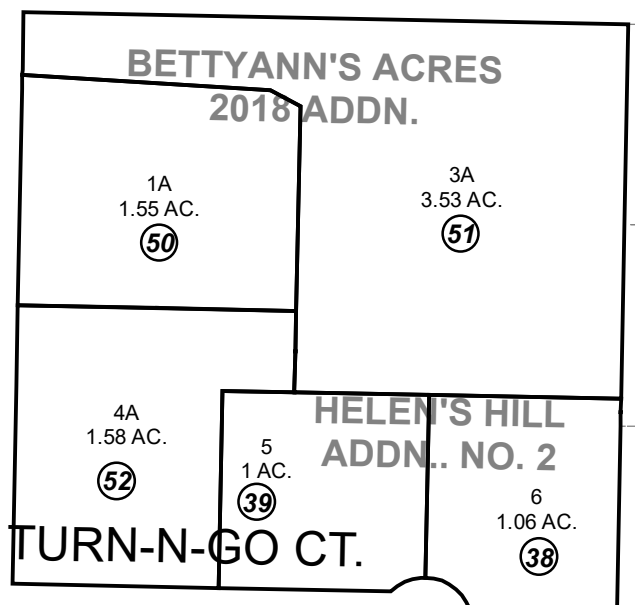
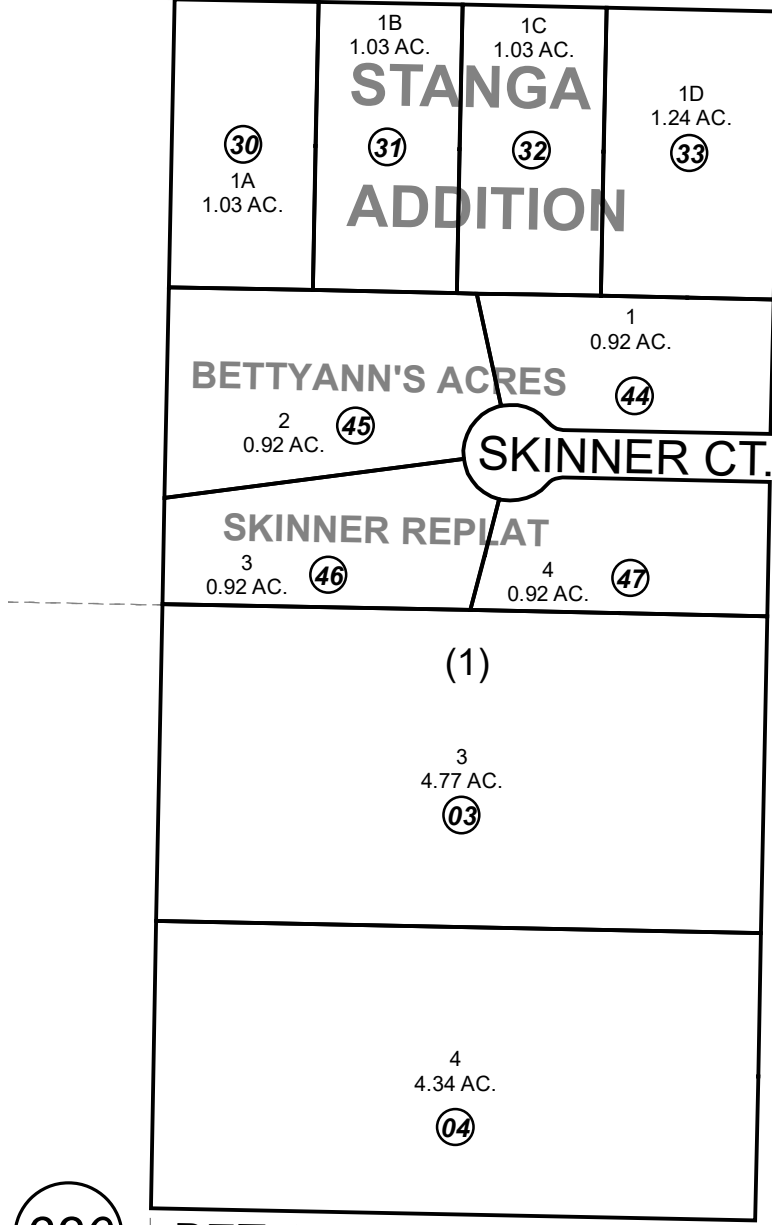
FRANJES

CIR.

HOYT NO. 2

021

This map is prepared for Kenai Peninsula Borough Assessing Dept. use only and is not intended for conveyance nor is it a survey.



320

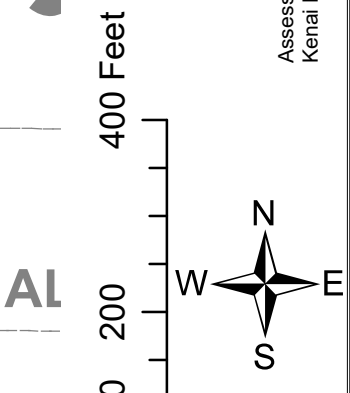
254

260

KN0830143 BETTYANN'S ACRES SUB
 KN0850037 BETTYANN'S ACRES SUB GOGGIA ADDN
 KN0850181 BETTYANN'S ACRES SUB GOGGIA ADDN NO 2
 KN0850189 BETTYANN'S ACRES SUB STANGA ADDN
 KN0860102 BETTYANN'S ACRES SHERIANN ADDN
 KN0860121 BETTYANN'S ACRES HELEN'S HILL SUB ADDN NO 2
 KN0930040 BETTYANN'S ACRES SUB SKINNER REPLAT
 KN2013086 BETTYANN'S ACRES 2013 ADDN
 KN2018041 BETTYANN'S ACRES 2018 ADDN
 KN2018100 BETTYANN'S ACRES LOBATO REPLAT

Note- Assessor's block Numbers Shown in Ellipses Assessor's Parcel Numbers Shown in Circles

Assessor's Map Kenai Peninsula Borough



AUGUST 24, 2018	
For 2019 assessment roll	Revise
Delete	Add
To	53
13, 14	

LOWER SALAMATOF AVE.