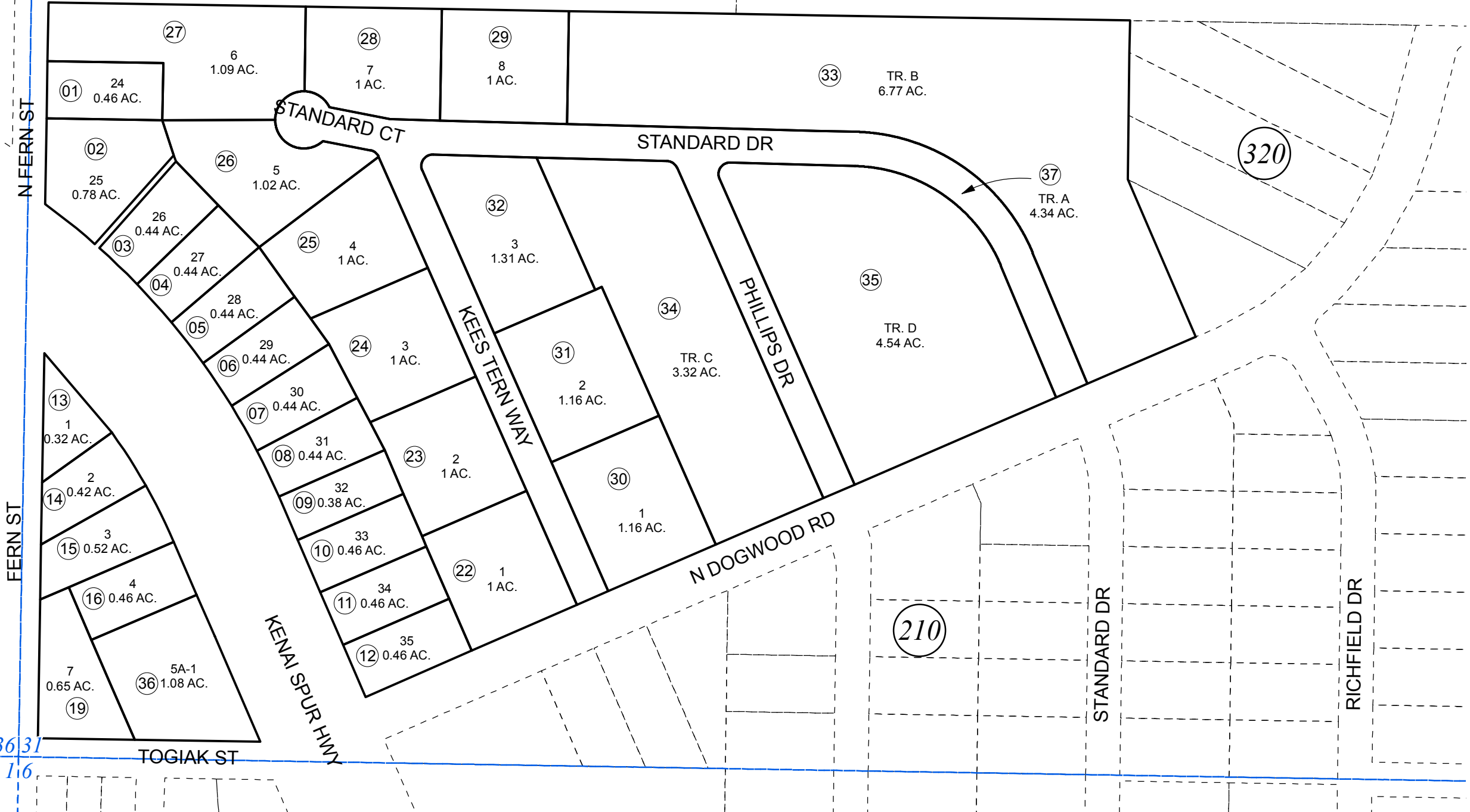


BK
025

BK
041



T06N
T05N

NOVEMBER 20, 2018



0 50 100 200 Feet

For 2019 assessment roll		
Delete	Add	Revise
To		
	37	

Assessor's Map
Kenai Peninsula Borough

VALHALLA HEIGHTS NO 2 KN0001634
 VALHALLA HEIGHTS WISNIEWSKI ADDN KN0960089
 KEE'S TERN SUB KN2015025
 VALHALLA HEIGHTS WISNIEWSKI SECOND ADDN KN2016067

Note- Assessor's block Numbers Shown in Ellipses
 Assessor's Parcel Numbers Shown in Circles

This map is prepared for Kenai Peninsula Borough Assessing Dept. use only and is not intended for conveyance nor is it a survey.