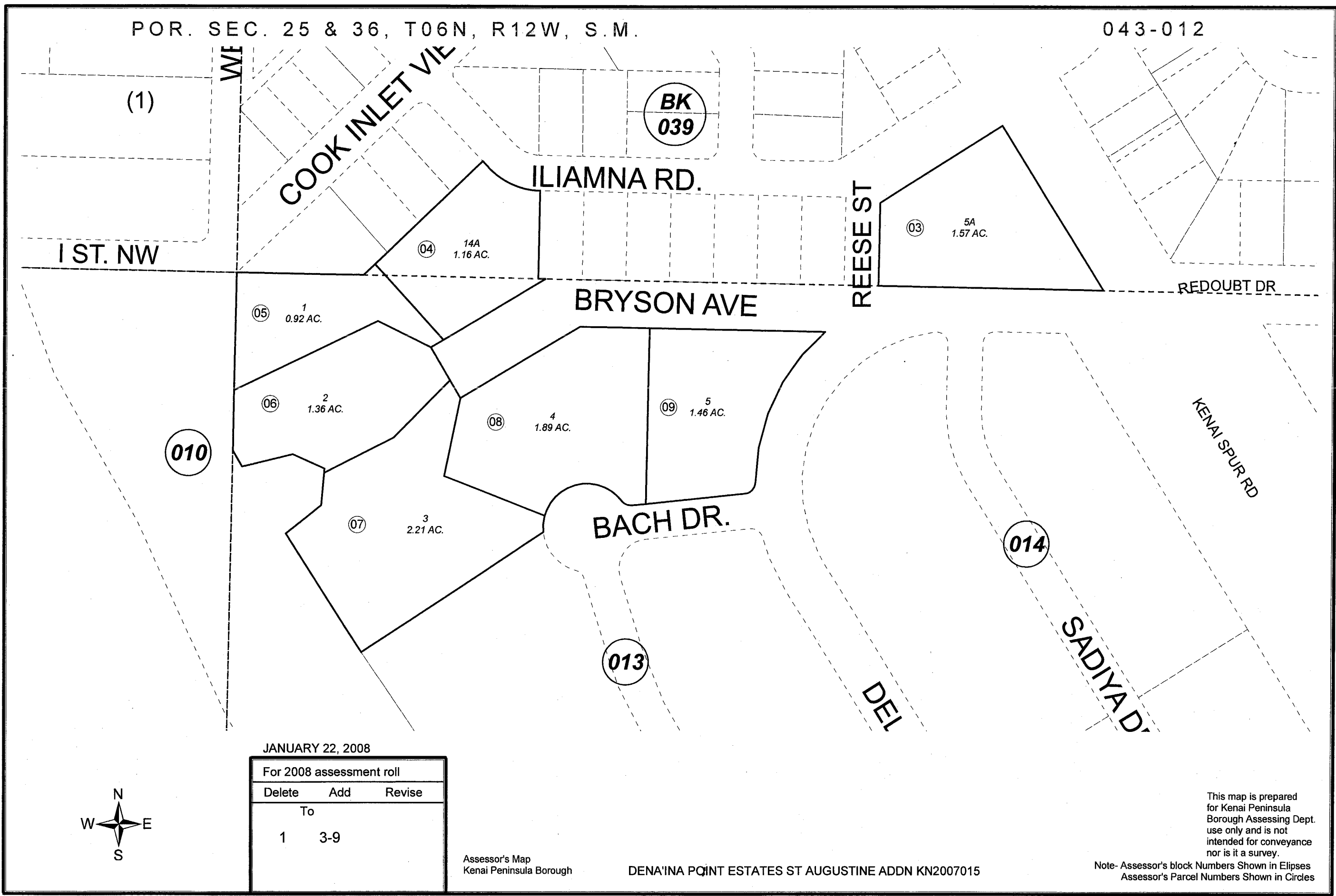


POR. SEC. 25 & 36, T06N, R12W, S.M.

043-012



JANUARY 22, 2008

| For 2008 assessment roll | | |
|--------------------------|-----|--------|
| Delete | Add | Revise |
| | To | |
| 1 | 3-9 | |



Assessor's Map
Kenai Peninsula Borough

DENA'INA POINT ESTATES ST AUGUSTINE ADDN KN2007015

This map is prepared for Kenai Peninsula Borough Assessing Dept. use only and is not intended for conveyance nor is it a survey.

Note- Assessor's block Numbers Shown in Ellipses
Assessor's Parcel Numbers Shown in Circles