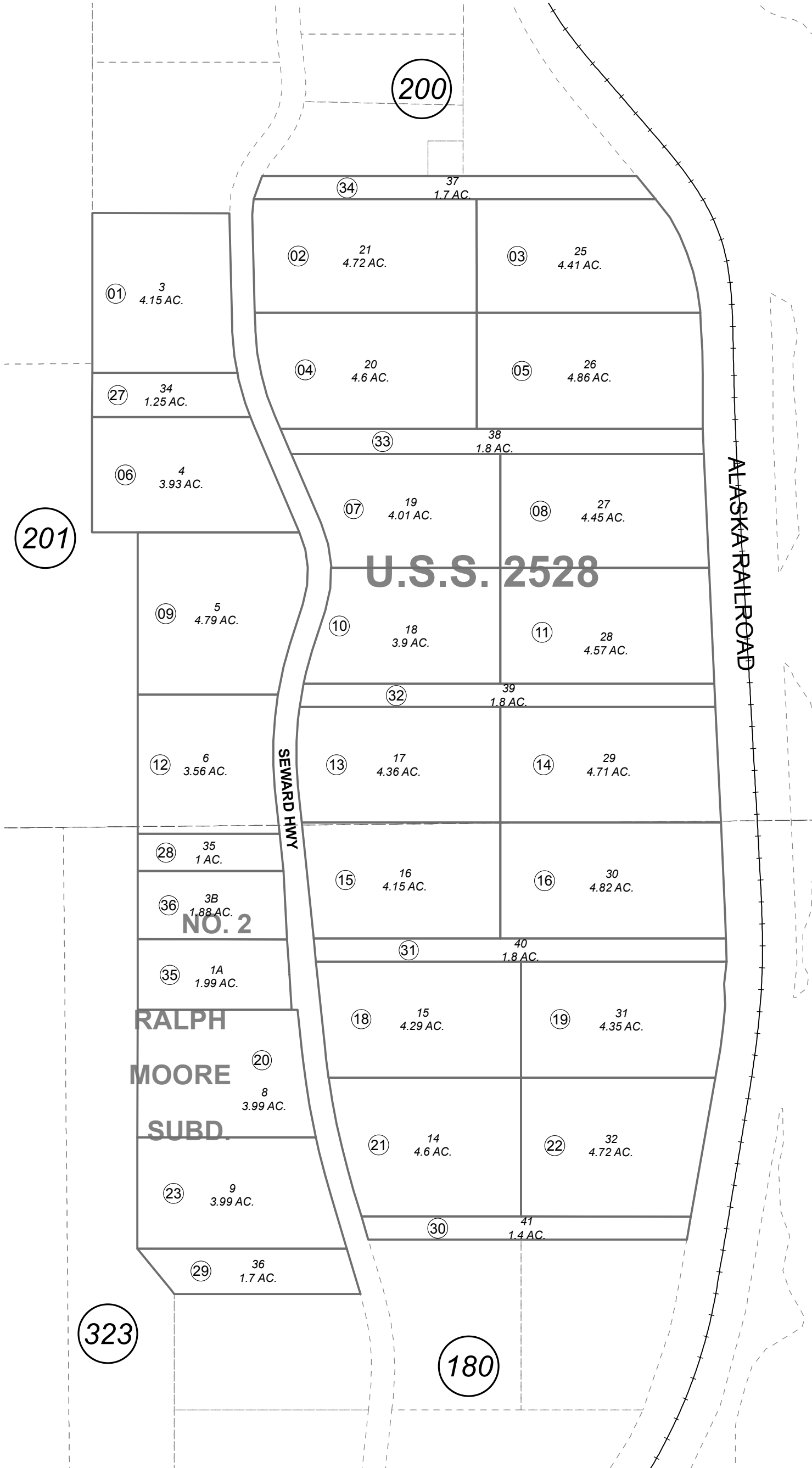


POR. SEC. 1, T04N, R01W; POR. SEC. 36, T05N, R01W, S.M. 125-190



201

200

323

180

RALPH MOORE SUBD.

NO. 2

U.S.S. 2528

ALASKA RAILROAD

SEWARD HWY

Upper Trail Lake



0 100 200 Feet

JULY 23, 2015

For 2016 assessment roll	
Delete	Add
	Revise
To	01
(ACREAGE CHANGE)	

This map is prepared for Kenai Peninsula Borough Assessing Dept. use only and is not intended for conveyance nor is it a survey.

RALPH MOORE SUB SW0860019
 RALPH MOORE SUB NO. 2 SW2008016
 RECORD OF SURVEY SL2011011
 RECORD OF SURVEY LOT 3 USS 2528 SW2015009

Assessor's Map
 Kenai Peninsula Borough

Note- Assessor's block Numbers Shown in Ellipses
 Assessor's Parcel Numbers Shown in Circles