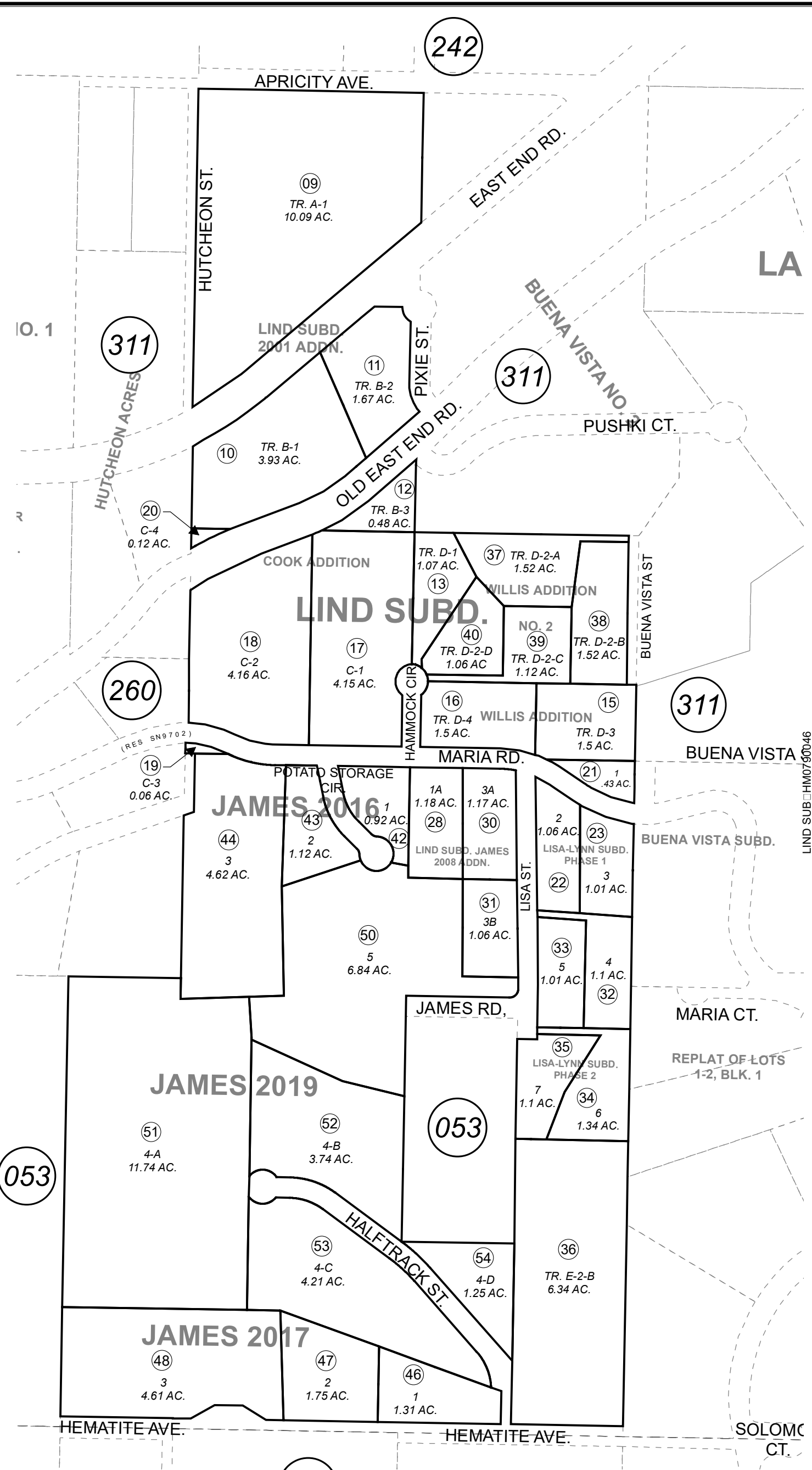


172-310

NW1/4 SE1/4 & W1/2 SW1/4 SEC. 13, T05S, R12W, S.M.

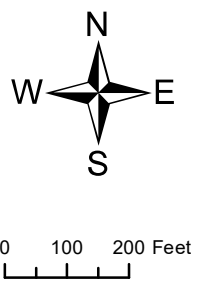


This map is prepared for Kenai Peninsula Borough Assessing Dept. use only and is not intended for conveyance nor is it a survey.

Note- Assessor's block Numbers Shown in Ellipses
Assessor's Parcel Numbers Shown in Circles

- LIND SUB NO 1 HM0790046
- LIND SUB NO 1 HM0850042
- LIND SUB 2001 ADDN HM2001055
- LIND SUB WILLIS ADDN HM2004076
- LIND SUB COOK ADDN HM2005062
- LISA - LYNN SUB PHASE 1 HM2007076
- LIND SUB JAMES 2006 ADDN HM2007129
- LIND SUB JAMES 2008 ADDN HM2008037
- LISA-LYNN SUB PHASE 2 HM2008072
- LIND SUB WILLIS ADDN NO 2 HM2008076
- JAMES 2009 SUB HM2009047
- JAMES 2016 SUB HM2016016
- JAMES 2017 SUB HM2018024
- JAMES 2019 SUB HM2019017

Assessor's Map
Kenai Peninsula Borough



AUGUST 20, 2019	
For 2020 assessment roll	
Delete	Revise
Add	
To	
49	51-54