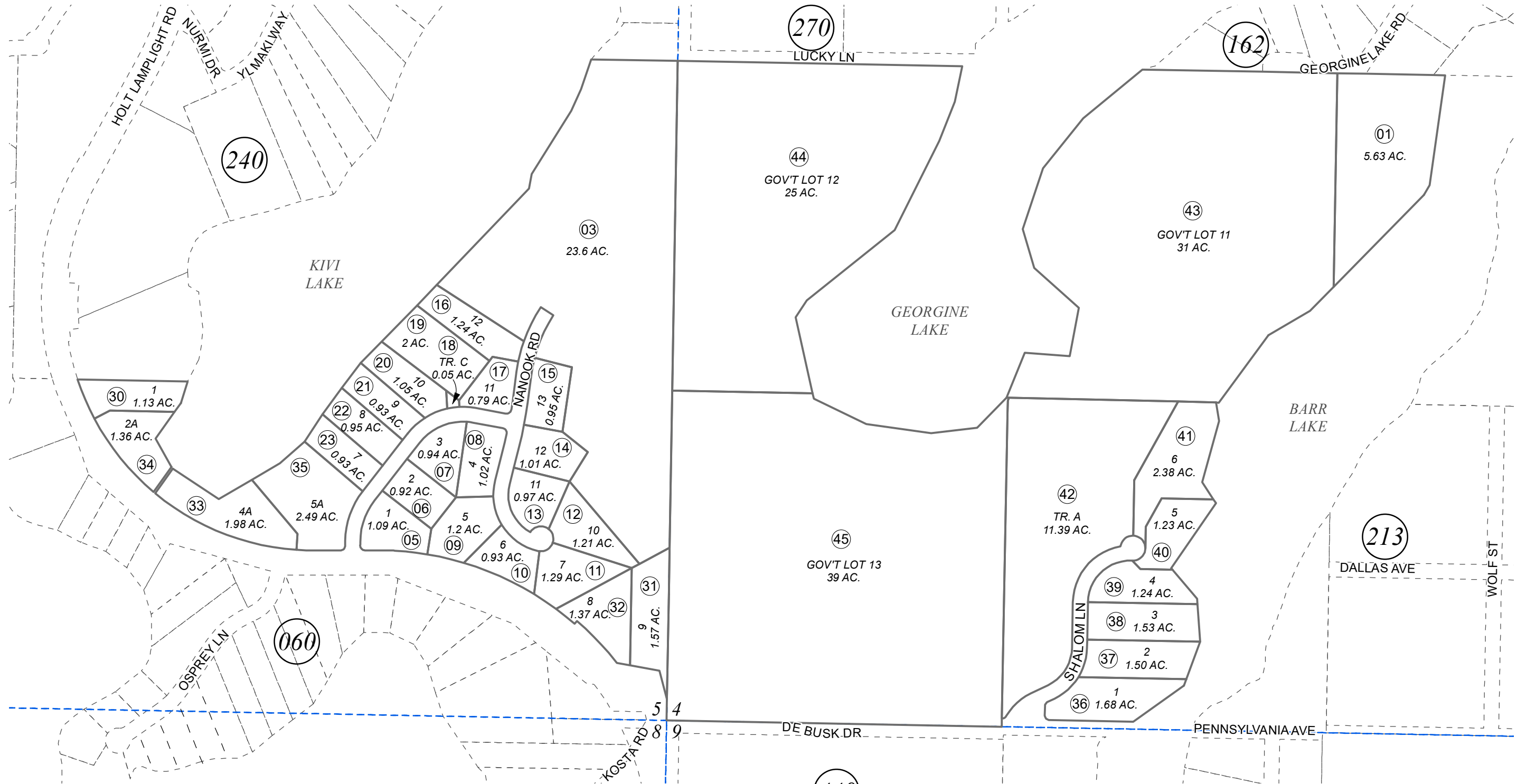


POR. SE1/4 SEC. 05 & SW1/4 SEC. 04, T07N, R11W, S.M.

013-061



SEPTEMBER 30, 2022

For 2023 assessment roll		
Delete	Add	Revise
	To	
02	36-45	



0 100 200 400 Feet

Assessor's Map
Kenai Peninsula Borough

KIVI SHORES SUB PHASE ONE AMENDED KN0860104
 KIVI SHORES SUB PHASE TWO KN0870010
 KIVI SHORES SUB ADDN NO 1 KN0900007
 KIVI SHORES REPLAT #1 KN2011010
 IMMANUEL SUB KN2022046

This map is prepared for Kenai Peninsula Borough Assessing Dept. use only and is not intended for conveyance nor is it a survey.

Note- Assessor's block Numbers Shown in Ellipses
 Assessor's Parcel Numbers Shown in Circles