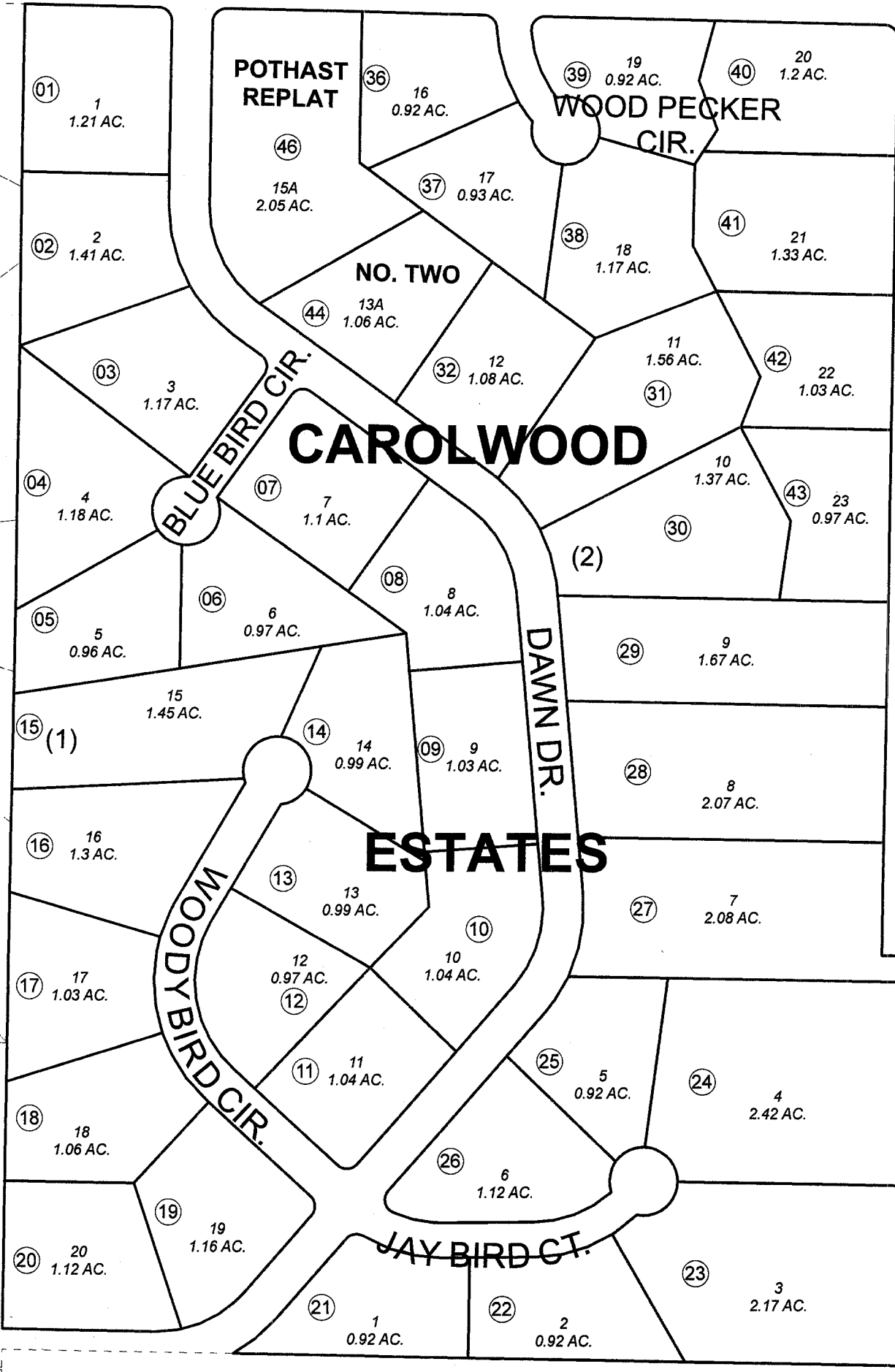


058-330

POR. E1/2 SE1/4, SEC. 22, T05N, R10W, S.M.

310

NATIONAL AVE.



This map is prepared for Kenai Peninsula Borough Assessing Dept. use only and is not intended for conveyance nor is it a survey.

Note- Assessor's block Numbers Shown in Ellipses Assessor's Parcel Numbers Shown in Circles

CAROLWOOD ESTATES AMENDED KN0830238
CAROLWOOD ESTATES NO 2 KN0860002
CAROLWOOD ESTATES POTHAST REPLAT KN2008043

Assessor's Map
Kenai Peninsula Borough



JUNE 25, 2008

For 2009 assessment roll	
Delete	Add
	35,45
To	46

031