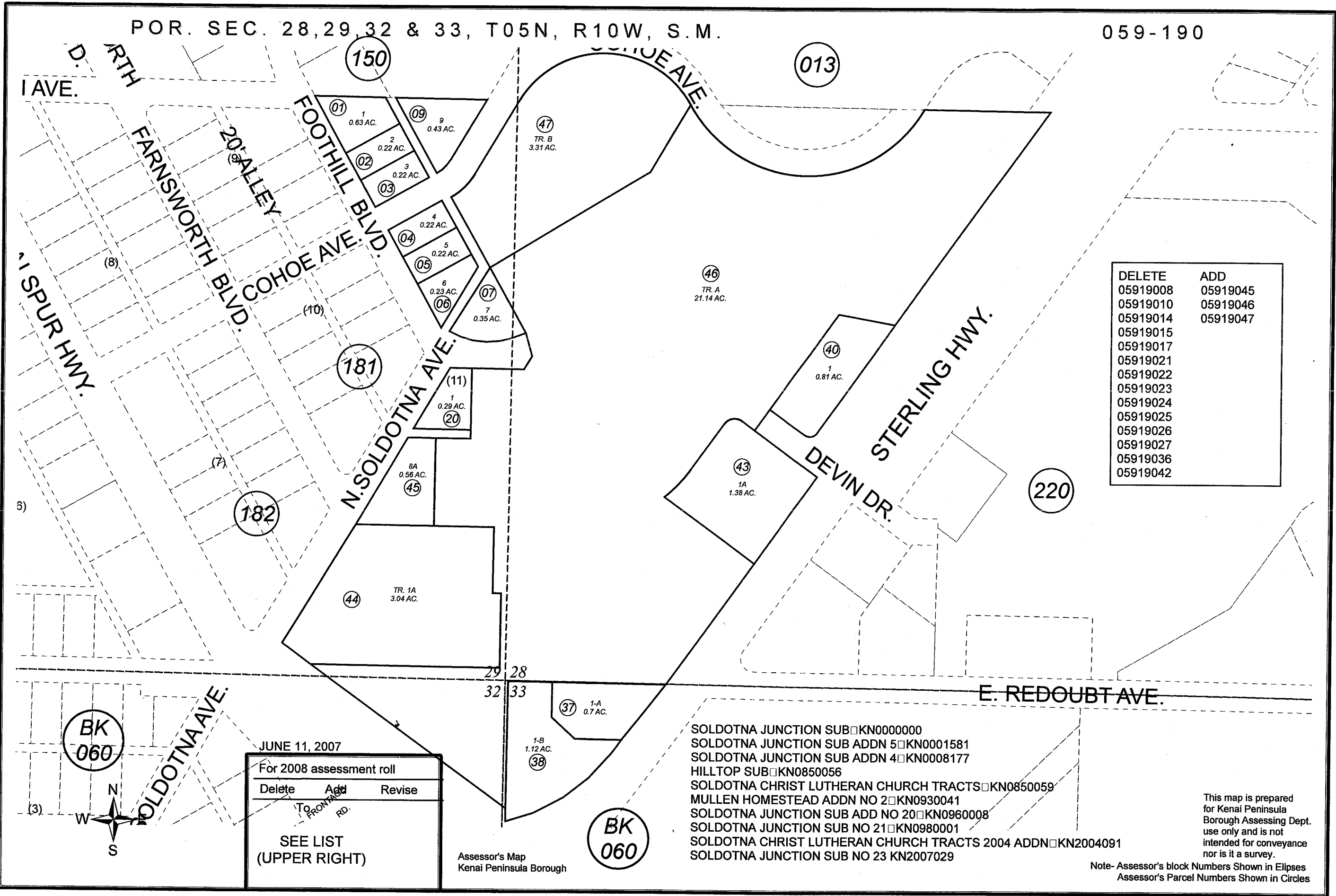


POR. SEC. 28, 29, 32 & 33, T05N, R10W, S.M.

059-190



DELETE	ADD
05919008	05919045
05919010	05919046
05919014	05919047
05919015	
05919017	
05919021	
05919022	
05919023	
05919024	
05919025	
05919026	
05919027	
05919036	
05919042	

JUNE 11, 2007

For 2008 assessment roll		
Delete	Add	Revise

SEE LIST (UPPER RIGHT)

- SOLDOTNA JUNCTION SUB □ KN0000000
- SOLDOTNA JUNCTION SUB ADDN 5 □ KN0001581
- SOLDOTNA JUNCTION SUB ADDN 4 □ KN0008177
- HILLTOP SUB □ KN0850056
- SOLDOTNA CHRIST LUTHERAN CHURCH TRACTS □ KN0850059
- MULLEN HOMESTEAD ADDN NO 2 □ KN0930041
- SOLDOTNA JUNCTION SUB ADD NO 20 □ KN0960008
- SOLDOTNA JUNCTION SUB NO 21 □ KN0980001
- SOLDOTNA CHRIST LUTHERAN CHURCH TRACTS 2004 ADDN □ KN2004091
- SOLDOTNA JUNCTION SUB NO 23 KN2007029

This map is prepared for Kenai Peninsula Borough Assessing Dept. use only and is not intended for conveyance nor is it a survey.

Note- Assessor's block Numbers Shown in Ellipses
Assessor's Parcel Numbers Shown in Circles

Assessor's Map
Kenai Peninsula Borough

BK 060

BK 060

