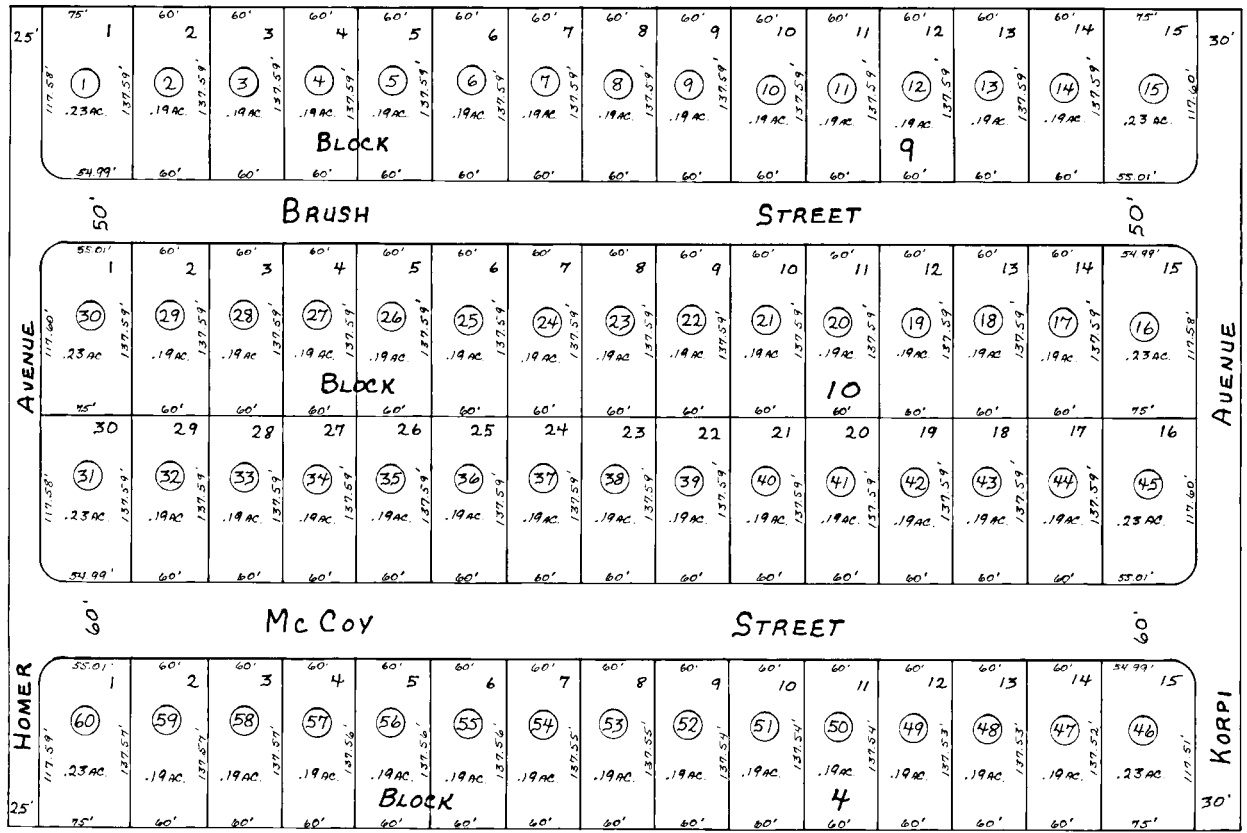


POR. NW 1/4 NW 1/4 SEC. 25, T6N, R12W, S.B. & M.

1

2



17

1

LEN-MAR PARK FILING NO. 2 (K-80-89)

1

Assessor's Map Kenai Peninsula Borough, Alaska

NOTE - Assessor's Block Numbers Shown in Ellipses Assessor's Parcel Numbers Shown in Circles