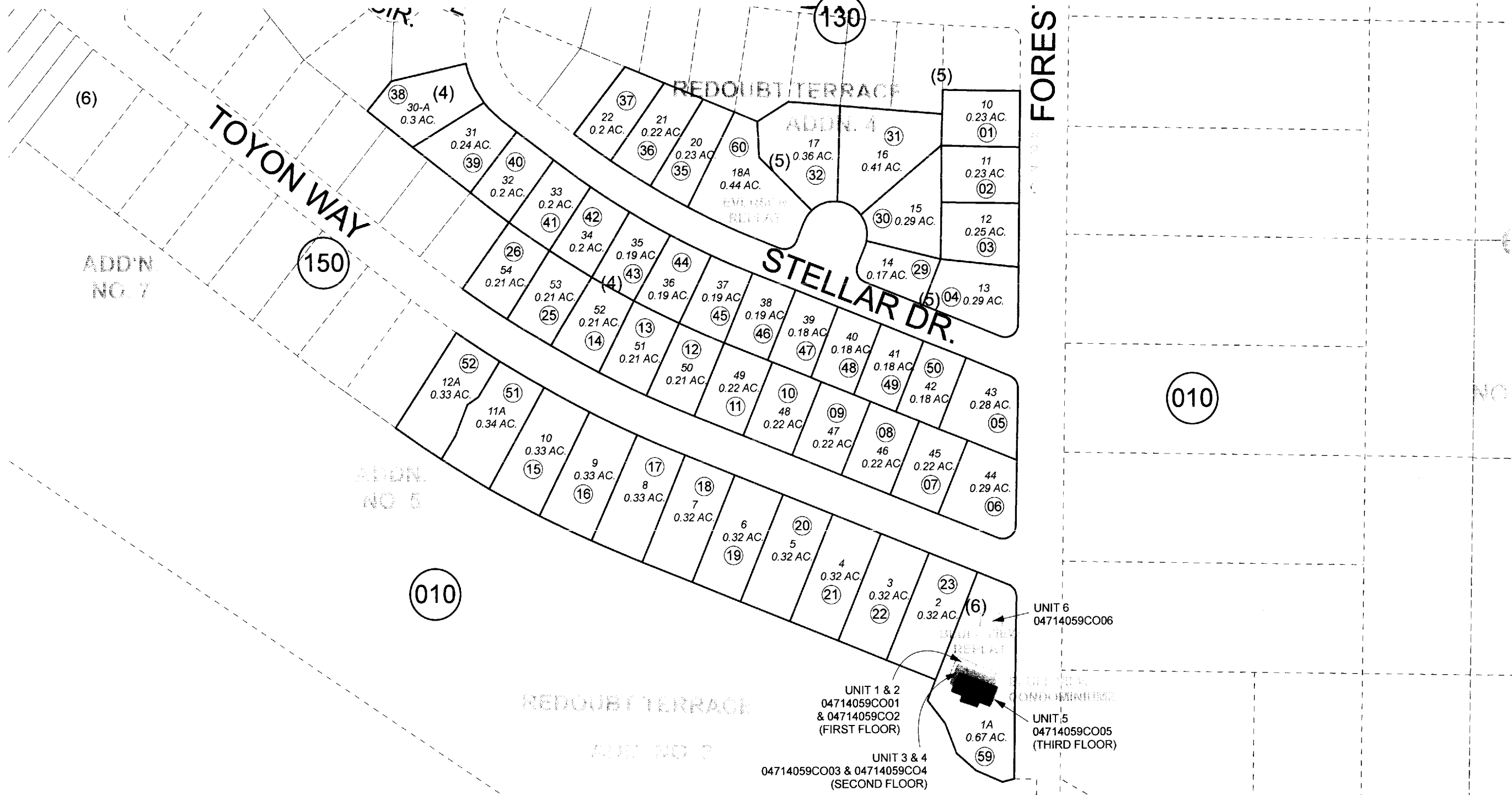


POR. SEC. 6, T05N, R11W, S.M.

047-140



JULY 26, 2010

For 2011 assessment roll		
Delete	Add	Revise
To		
53-58		59
(ADDED CONDOMINIUM REFERENCE)		

Assessor's Map
Kenai Peninsula Borough

- REDOUBT TERRACE SUB ADDN 2 KN0750086
- REDOUBT TERRACE SUB ADDN 3 KN0760096
- REDOUBT TERRACE SUB ADDN 4 KN0810134
- REDOUBT TERRACE SUB ADDN 5 KN0830007
- REDOUBT TERRACE SUB ADDN 5 REPLAT OF LOTS 11 & 12 BLOCK 6 KN0930019
- REDOUBT TERRACE SUB BLUFF VIEW CONDOMINIUMS KN0990039
- REDOUBT TERRACE SUB BLUFF VIEW REPLAT KN2007081
- REDOUBT TERRACE EVERSON REPLAT KN2008072

Note- Assessor's block Numbers Shown in Elipses
Assessor's Parcel Numbers Shown in Circles

This map is prepared for Kenai Peninsula Borough Assessing Dept. use only and is not intended for conveyance nor is it a survey.