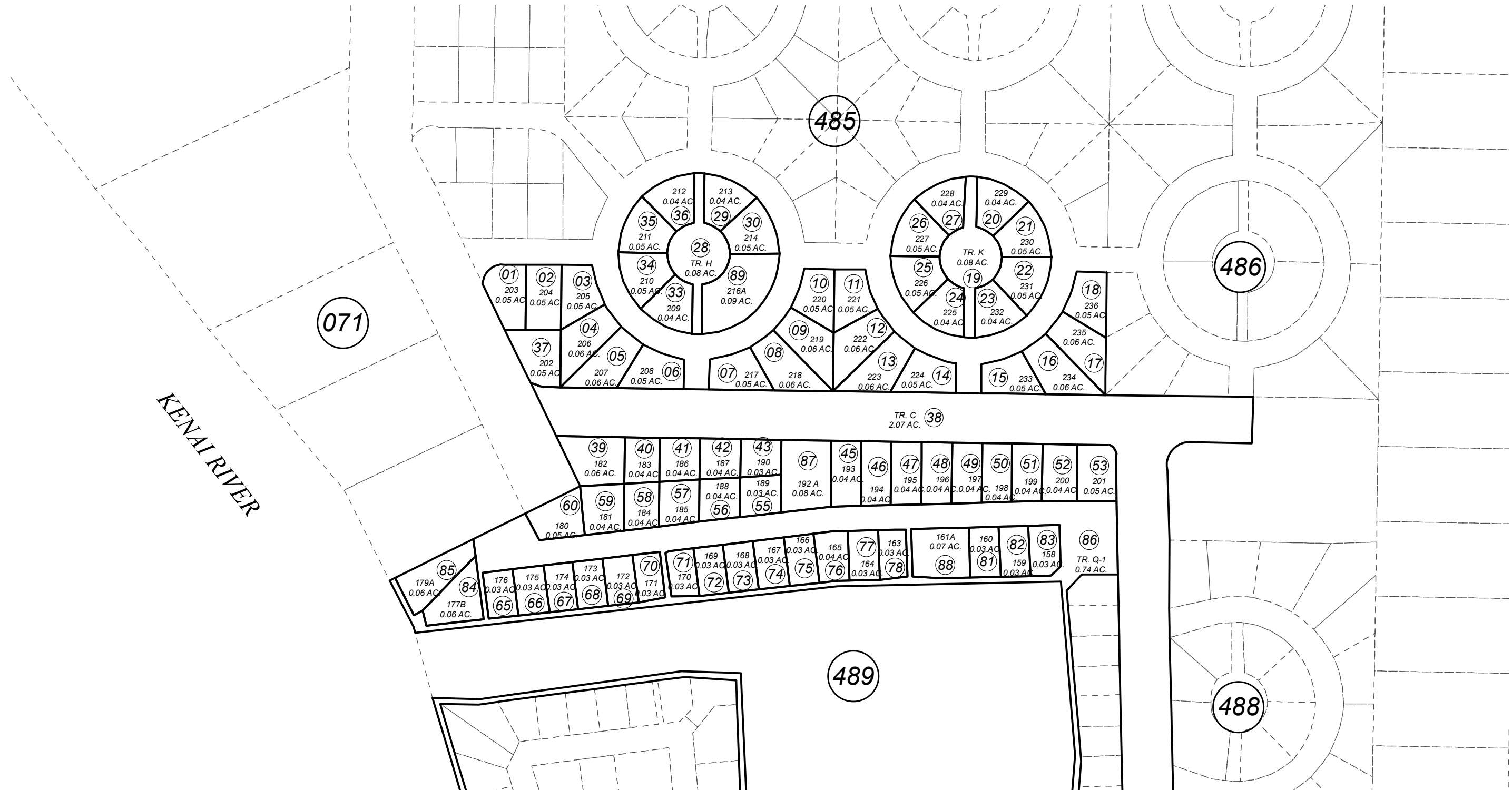


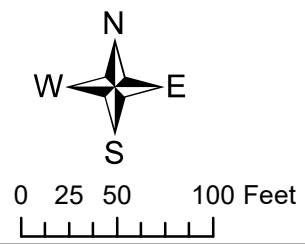
POR. SEC. 19, T05N, R10W, S.M.

057-487



JANUARY 8, 2019

For 2019 assessment roll		
Delete	Add	Revise
	To	
31,32	89	



Assessor's Map  
Kenai Peninsula Borough

POACHER'S COVE PLANNED UNIT DEVELOPMENT AMENDED □KN0870069  
 POACHER'S COVE MOORE ADDN AMENDED □KN0970046  
 POACHER'S COVE SCHMALZRIED ADDN □KN2005094  
 POACHER'S COVE CHRISTENSON REPLAT KN2017076  
 POACHER'S COVE EMORY REPLAT KN2018093

Note- Assessor's block Numbers Shown in Elipses  
Assessor's Parcel Numbers Shown in Circles

This map is prepared for Kenai Peninsula Borough Assessing Dept. use only and is not intended for conveyance nor is it a survey.