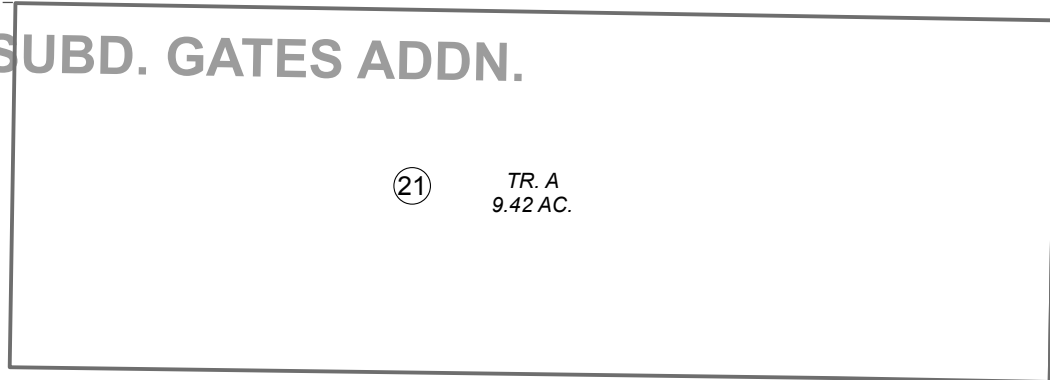


082

HECKEL SUBD. GATES ADDN.

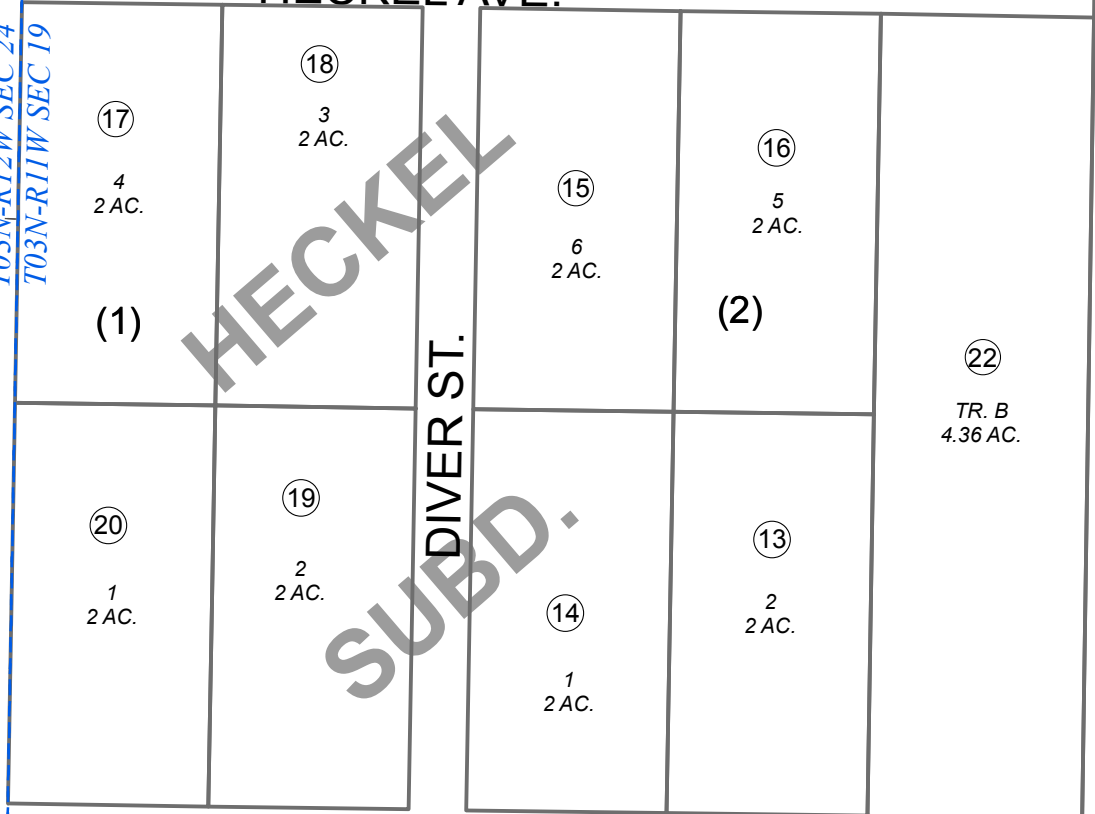


21 TR. A  
9.42 AC.

HECKEL AVE.

T03N-R12W SEC 24  
T03N-R11W SEC 19

310



17 4  
2 AC.

18 3  
2 AC.

15 6  
2 AC.

16 5  
2 AC.

20 1  
2 AC.

19 2  
2 AC.

14 1  
2 AC.

13 2  
2 AC.

22 TR. B  
4.36 AC.

DIVER ST.

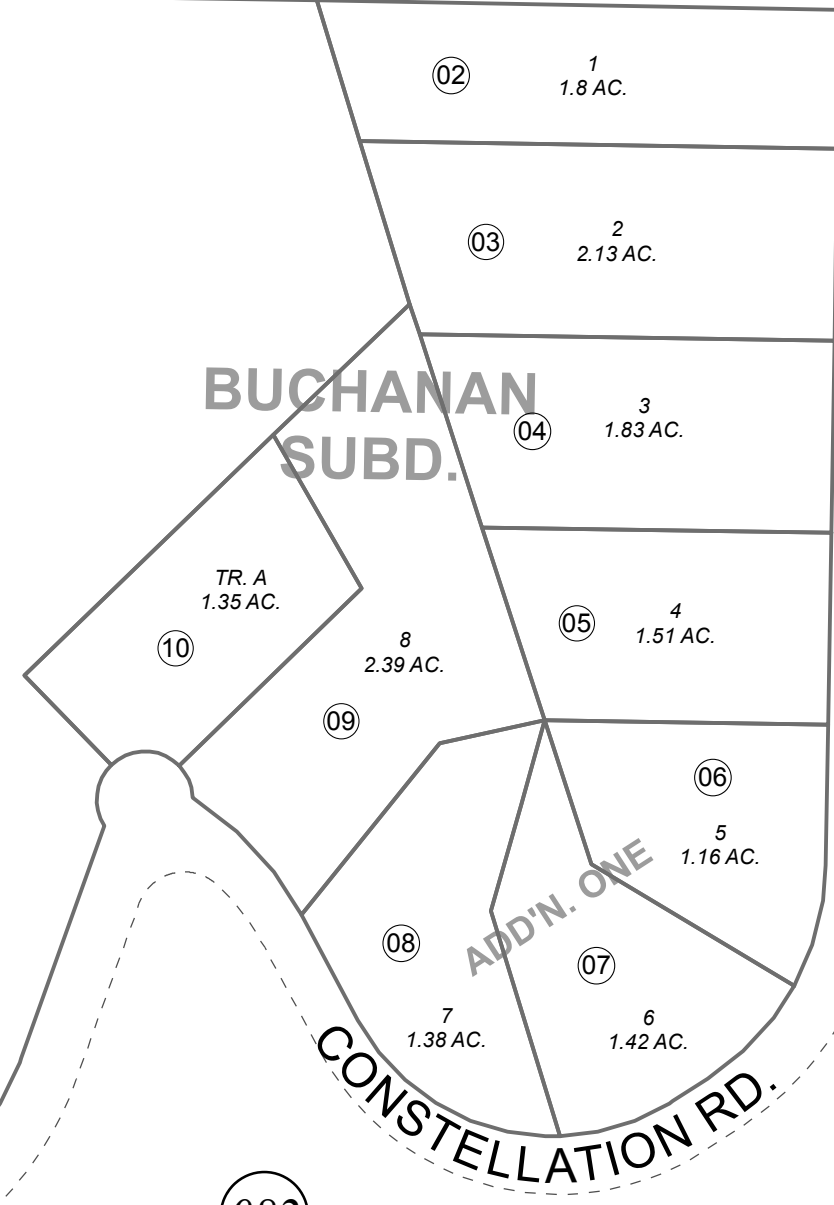
HECKEL SUBD.

CONSTELLATION RD.

082

11 TR. B  
15.4 AC.

BUCHANAN SUBD.



02 1  
1.8 AC.

03 2  
2.13 AC.

04 3  
1.83 AC.

10 TR. A  
1.35 AC.

05 4  
1.51 AC.

08 8  
2.39 AC.

07 6  
1.42 AC.

ADD'N. ONE

08 7  
1.38 AC.

06 5  
1.16 AC.

082

CONSTELLATION RD.

CONSTELLATION RD.

082

CIR.

DECEMBER 31, 2015

For 2016 assessment roll

Delete	Add	Revise
--------	-----	--------

To

01	133-082+
----	----------



0 50 100 200 Feet

Assessor's Map  
Kenai Peninsula Borough

HECKEL SUB KN0001667  
BUCHANAN SUB KN0720037  
BUCHANAN SUB KN0760031  
BUCHANAN SUB ADDN NO 1 KN0760180  
HECKEL SUB GATES ADDN KN2004050

This map is prepared for Kenai Peninsula Borough Assessing Dept. use only and is not intended for conveyance nor is it a survey.

Note- Assessor's block Numbers Shown in Elipses  
Assessor's Parcel Numbers Shown in Circles