

POR. SEC. 2, T04S, R15W, S.M.

165-014

010

COTTONWOOD POINT SUBD.

REPLAT NO. 1

COASTAL VISTA SUBD.

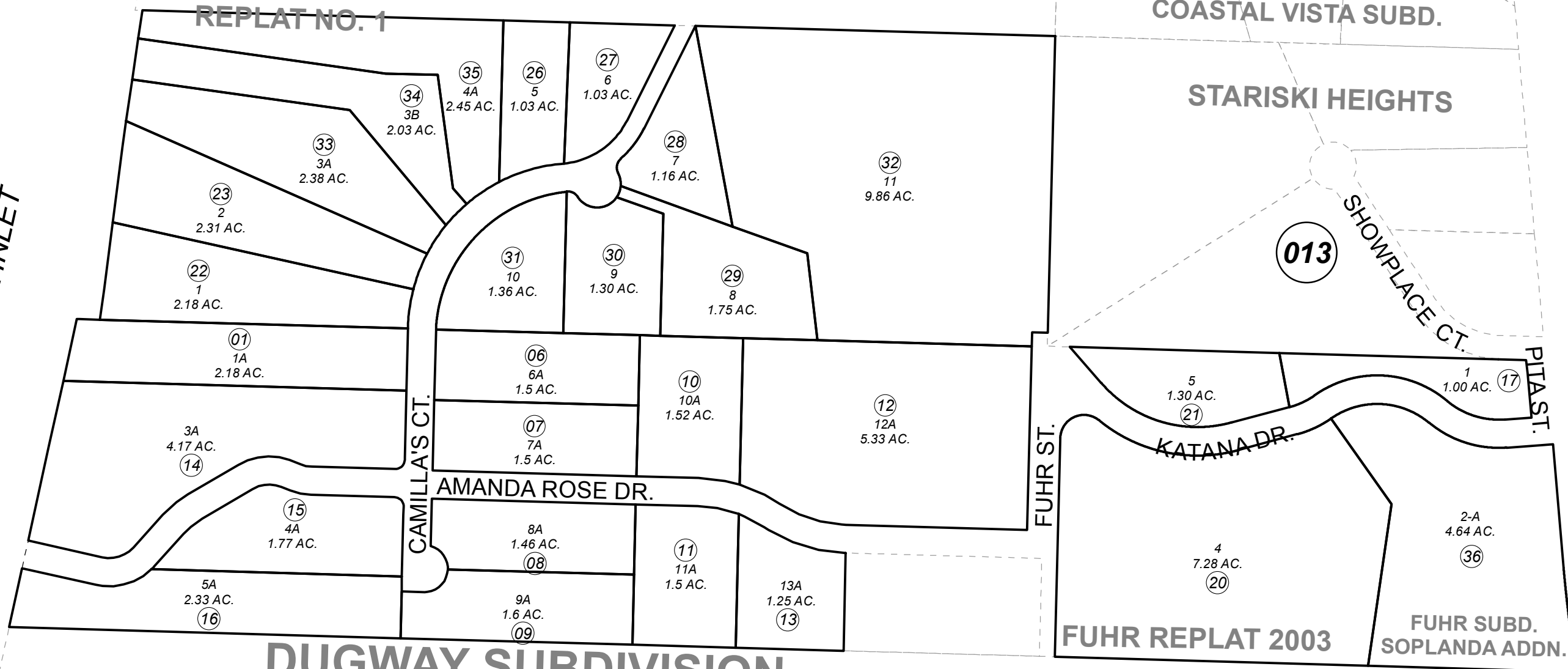
STARISKI HEIGHTS

STERLING HWY.

013

SHOWPLACE CT.

COOK INLET



DUGWAY SUBDIVISION

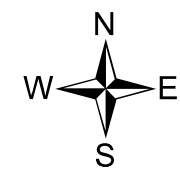
010

FUHR REPLAT 2003

FUHR SUBD. SOPLANDA ADDN.

OCTOBER 26, 2016

For 2017 assessment roll		
Delete	Add	Revise
To		
18,19	36	



0 100 200 400 Feet

Assessor's Map
Kenai Peninsula Borough

DUGWAY SUB REPLAT HM0930028
 FUHR REPLAT 2003 HM2003083
 COTTONWOOD POINT SUB HM2003096
 COTTONWOOD POINT SUB REPLAT NO 1 HM2005046
 FUHR SUB SOPLANDA ADDN HM2016019

This map is prepared for Kenai Peninsula Borough Assessing Dept. use only and is not intended for conveyance nor is it a survey.
 Note- Assessor's block Numbers Shown in Elipses
 Assessor's Parcel Numbers Shown in Circles