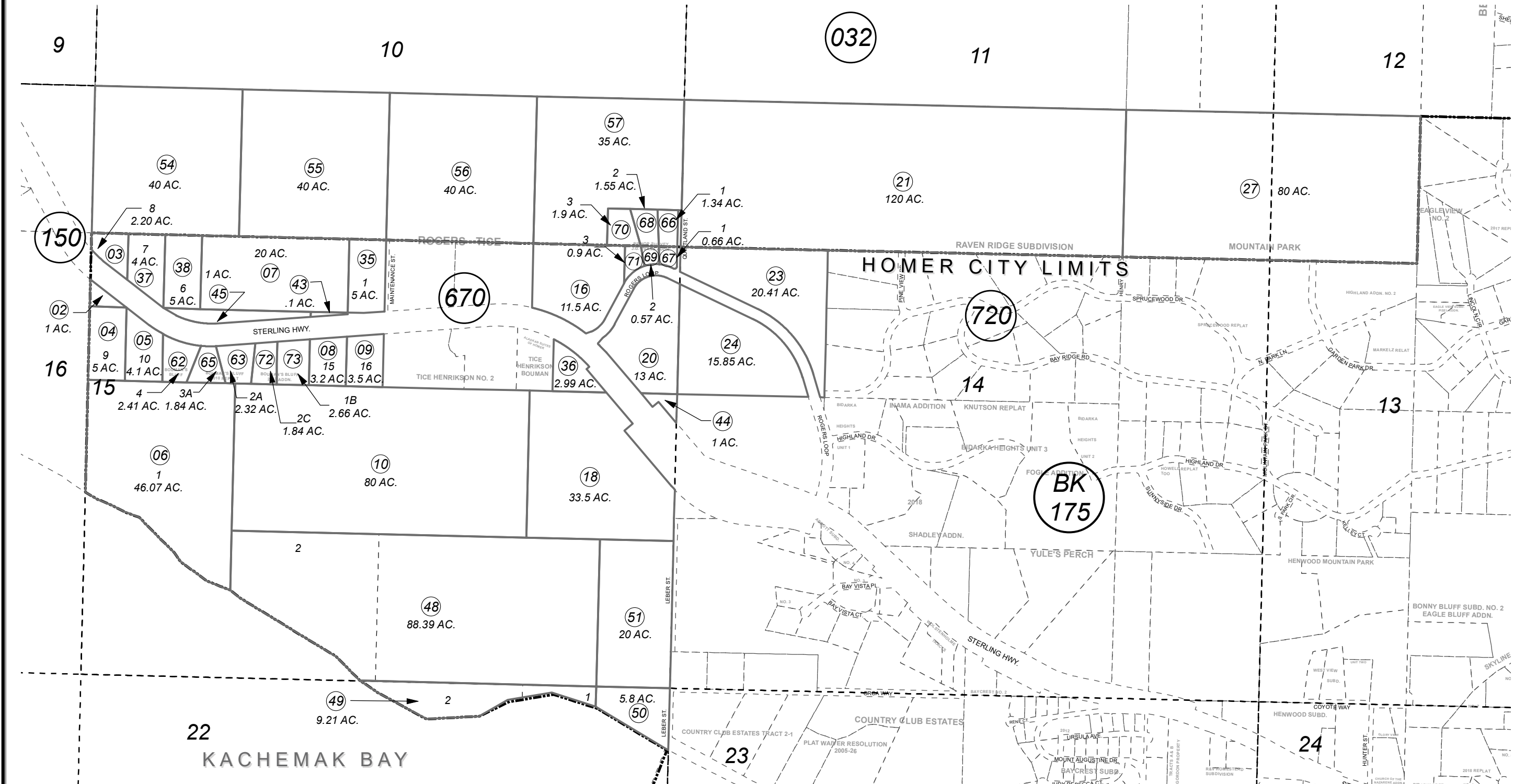


POR. SEC. 13-15, T06S, R14W, S.M.

173-160



APRIL 17, 2023

For 2023 assessment roll		
Delete	Add	Revise
To		23,24
(ACREAGE REVISION)		



0 250 500 1,000 Feet

Assessor's Map
Kenai Peninsula Borough

BISHOP SURVEY HM0690532
 BOUMAN'S BLUFF HM2006072
 BOUMAN'S BLUFF 2010 REPLAT HM2011013
 BISHOP SURVEY J.G. EVANS ADDN HM2011022
 BOUMAN'S BLUFF 2017 ADDN HM2017051

Note- Assessor's block Numbers Shown in Ellipses
 Assessor's Parcel Numbers Shown in Circles

This map is prepared
 for Kenai Peninsula
 Borough Assessing Dept.
 use only and is not
 intended for conveyance
 nor is it a survey.