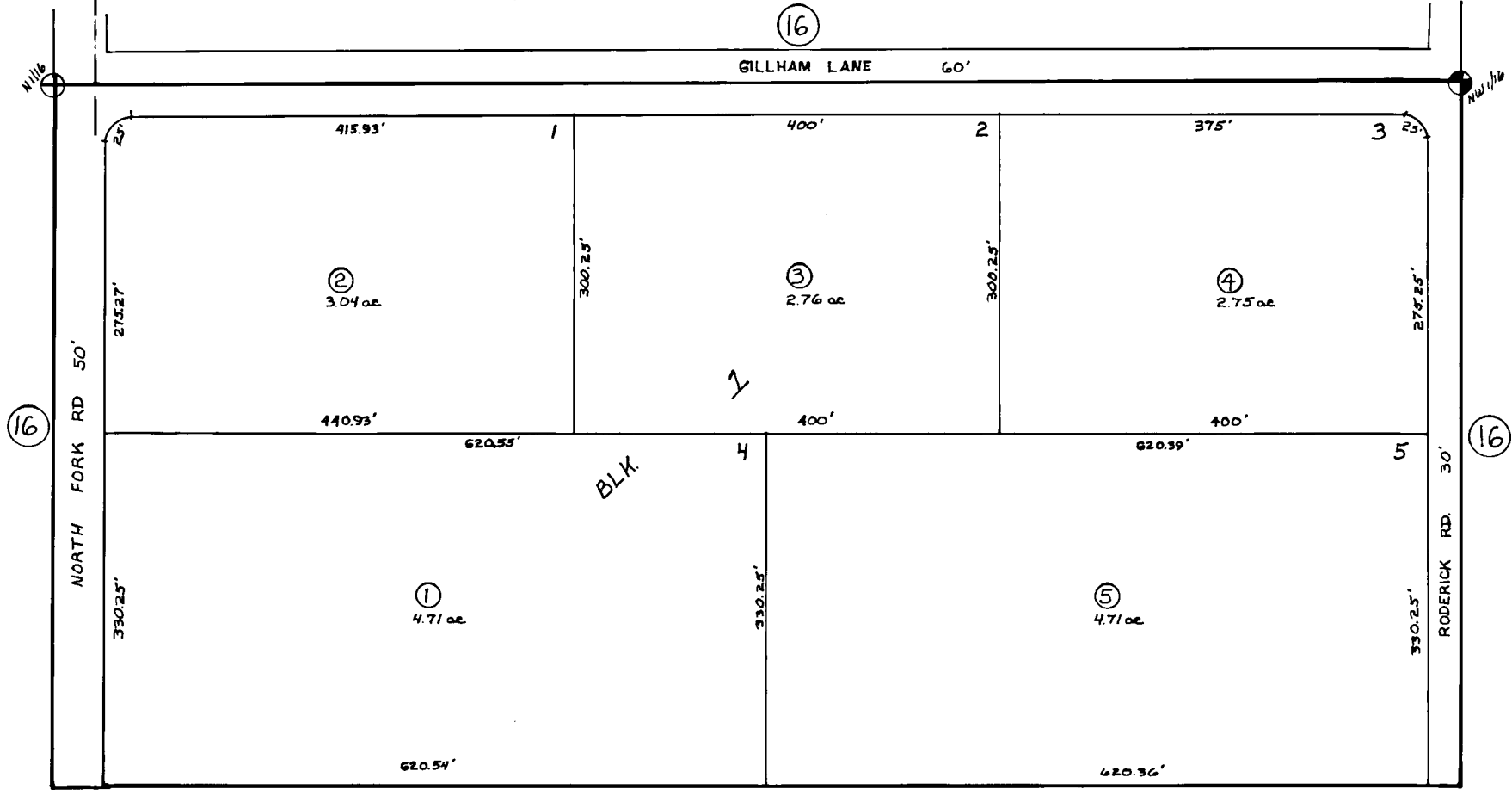


N1/2 SW1/4 NW1/4, SEC. 36, T.4S, R.15W, S.B.&M.

165-60



CAVE SUB. H-79-43

Assessor's Map
Kenai Peninsula Borough, Alaska

NOTE - Assessor's Block Numbers Shown in Ellipses
Assessor's Parcel Numbers Shown in Circles