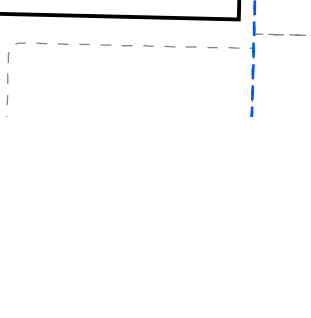
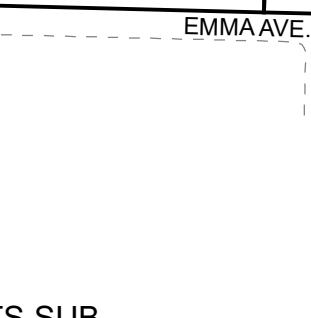
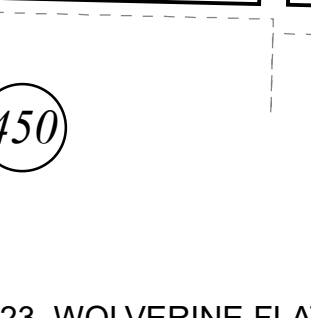
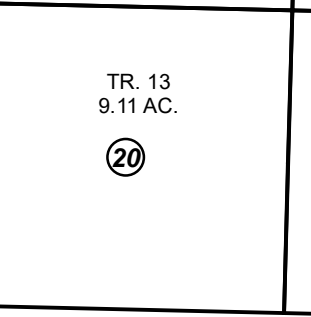
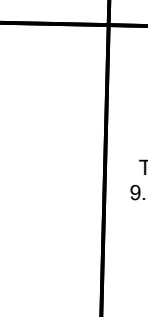
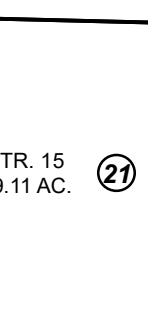
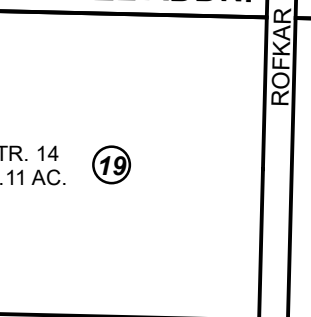
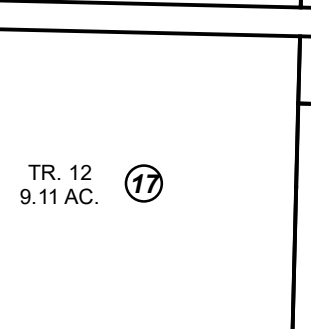
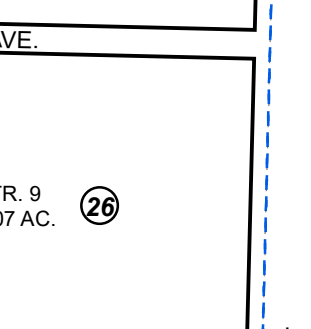
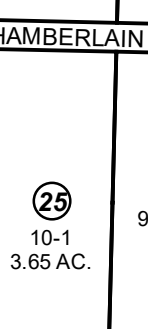
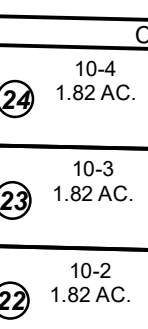
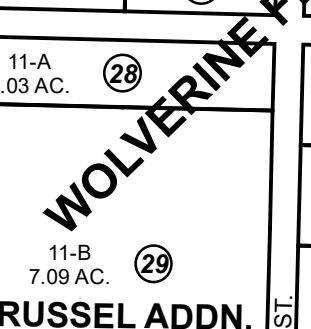
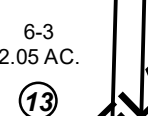
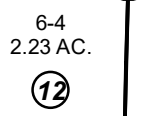
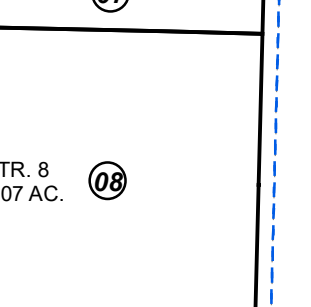
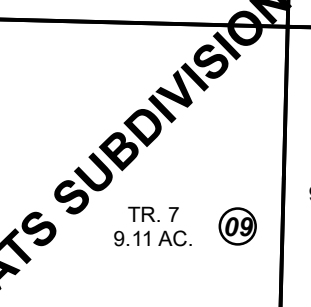
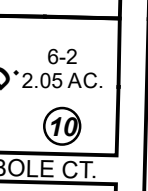
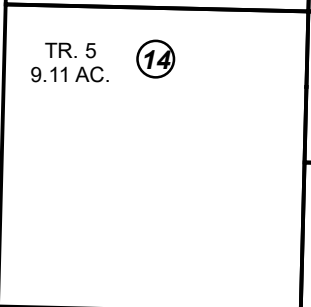
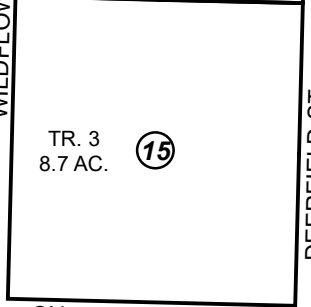
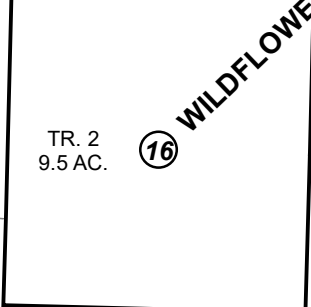
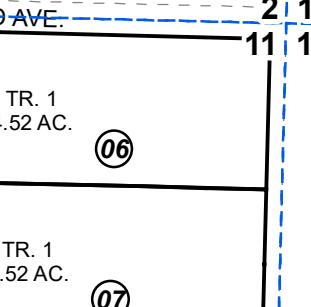
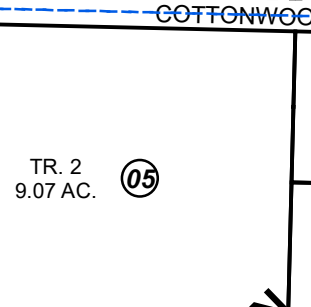
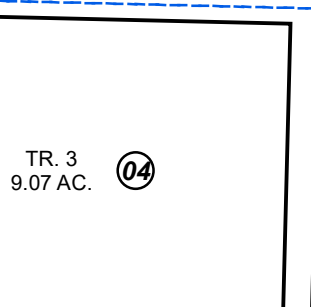
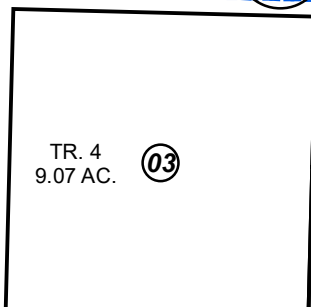
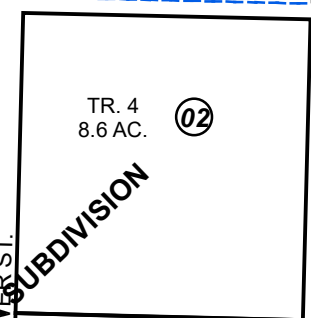
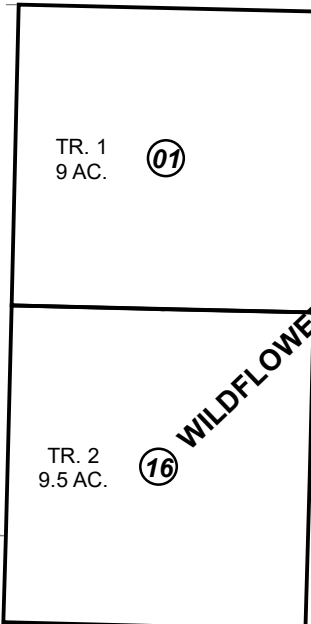


480

2 1
11 12

COTTONWOOD AVE.

COTTONWOOD AVE.

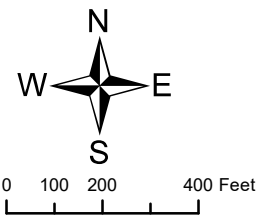


043

450

MAY 30, 2019

For 2020 assessment roll		
Delete	Add	Revise
	To	
18	28,29	



Assessor's Map
Kenai Peninsula Borough

HM0750023 WOLVERINE FLATS SUB
 HM0800016 WILDFLOWER SUB
 HM0860025 WOLVERINE FLATS 1985 SUB OF TRS 6 & 10
 HM2019005 WOLVERINE FLATS SUB RUSSELL ADDN

This map is prepared for Kenai Peninsula Borough Assessing Dept. use only and is not intended for conveyance nor is it a survey.
 Note- Assessor's block Numbers Shown in Ellipses
 Assessor's Parcel Numbers Shown in Circles