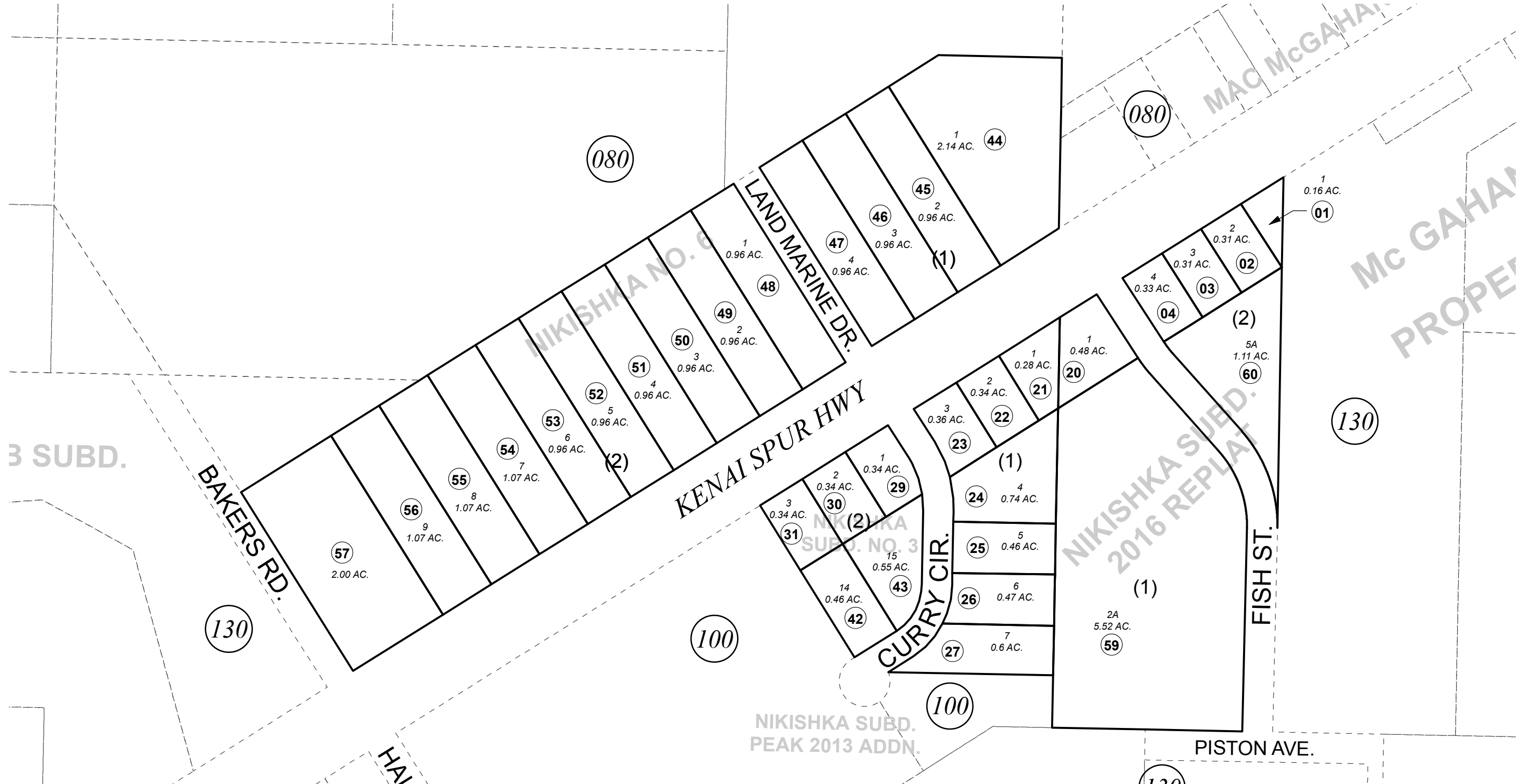


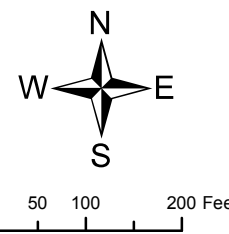
POR. SEC. 1, T07N, R12W, S.M.

012-090



DECEMBER 22, 2016

For 2017 assessment roll		
Delete	Add	Revise
	To	
05-19	59,60	



Assessor's Map
Kenai Peninsula Borough

NIKISHKA SUB NO 2 KN0001400
 NIKISHKA SUB NO 3 KN0001406
 NIKISHKA SUB NO 6 KN0001462
 NIKISHKA SUB NO 7 KN0900059
 NIKISHKA SUB 2016 REPLAT KN2016078

This map is prepared for Kenai Peninsula Borough Assessing Dept. use only and is not intended for conveyance nor is it a survey.

Note- Assessor's block Numbers Shown in Elipses
 Assessor's Parcel Numbers Shown in Circles