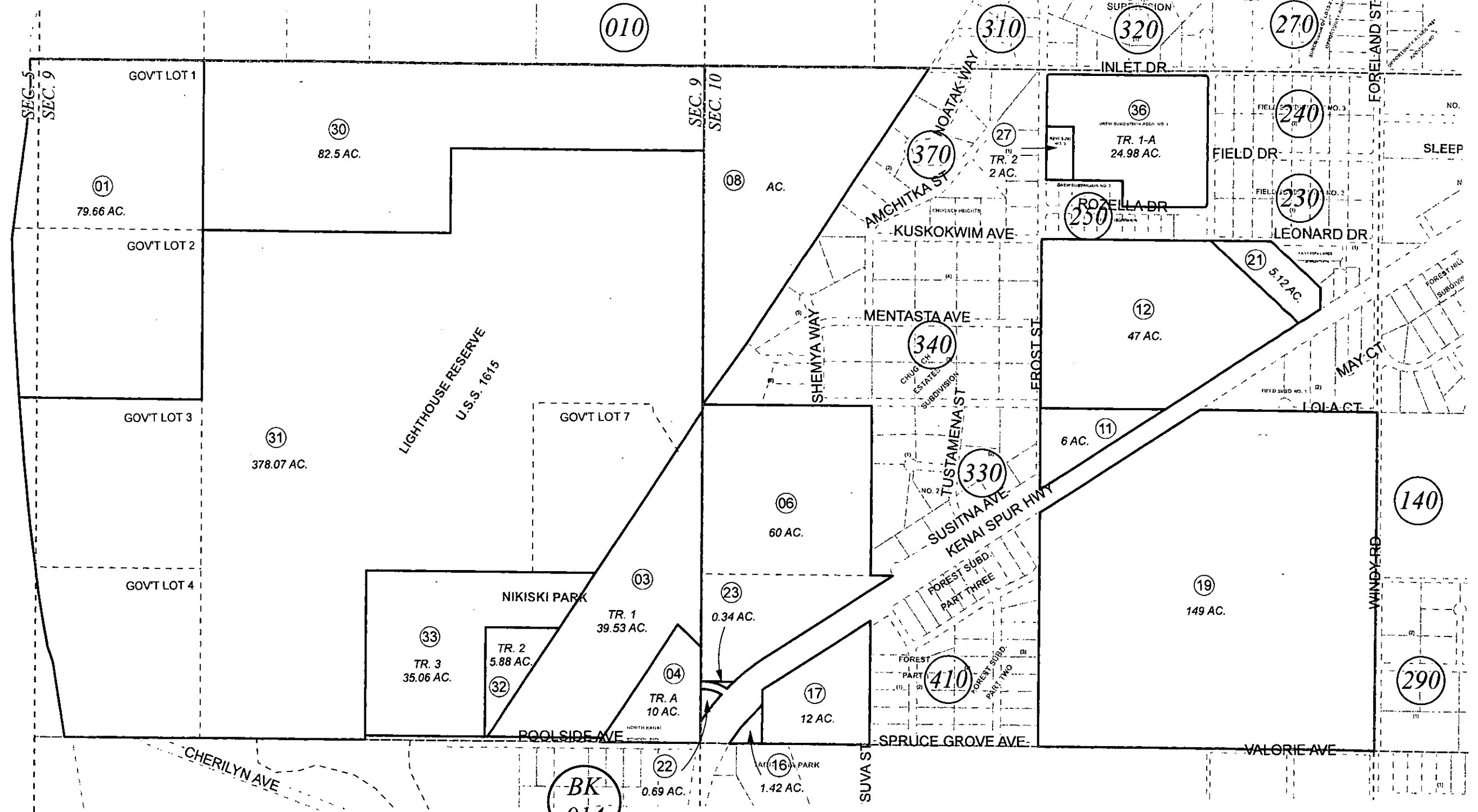


POR. SEC. 5, 9 & 10, T07N, R12W, S.M.

012-210



BK 014

JANUARY 5, 2012

For 2012 assessment roll		
Delete	Add	Revise
	To	
210-28,	✓	
250-12,		
250-31		
TO -35	210-36	



0 250 500 1,000 Feet

Assessor's Map
Kenai Peninsula Borough

DREW SUB #3 KN0750072
NIKISKI PARK SUB KN0820130
DREW SUB ADDN NO 4 KN2011100

This map is prepared for Kenai Peninsula Borough Assessing Dept. use only and is not intended for conveyance nor is it a survey.
Note- Assessor's block Numbers Shown in Ellipses
Assessor's Parcel Numbers Shown in Circles