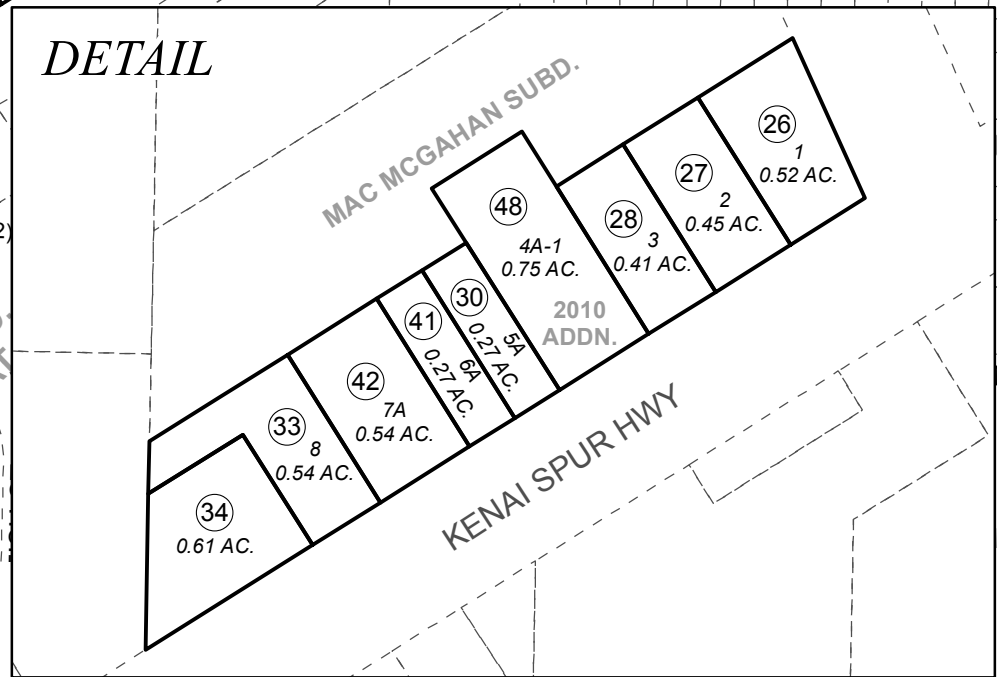
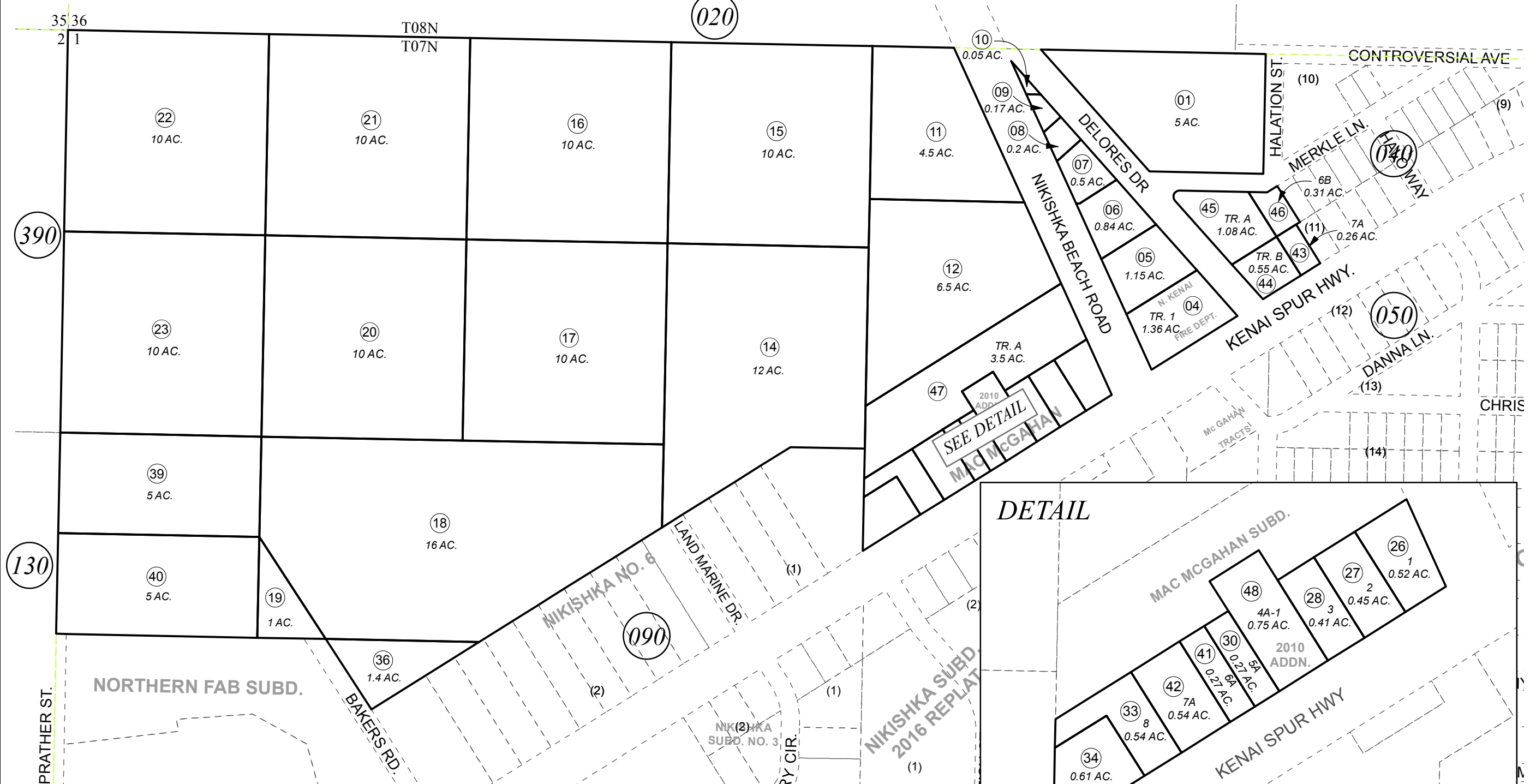


POR. SEC. 1, T07N, R12W, S.M.

012-080



390

130

020

090

040

050



0 95 190 380 Feet

FEBRUARY 1, 2017

| For 2017 assessment roll | | |
|--------------------------|-----|--------|
| Delete | Add | Revise |
| | | To |
| 35 | | 33 |
| (ACREAGE CHANGE) | | |

Assessor's Map
Kenai Peninsula Borough

MAC MCGAHAN SUB □ KN0001468
 NORTH KENAI FIRE DEPARTMENT □ KN0730013
 MAC MCGAHAN SUB RESUB NO 1 □ KN0730082
 AURORA HEIGHTS ADDN TO BLOCK 11 & REPLAT □ KN0780197
 MAC MCGAHAN SUB 1983 ADDN □ KN0830031
 MAC MCGAHAN SUB 2010 ADDN □ KN2011055

This map is prepared for Kenai Peninsula Borough Assessing Dept. use only and is not intended for conveyance nor is it a survey.
 Note- Assessor's block Numbers Shown in Elipses
 Assessor's Parcel Numbers Shown in Circles