

POR. SEC. 1 & 12, T07N, R12W, S.M.

130

012-360

SHKE AVE.

JOHNS SUBD.

Mc GAHAN - SCHILLING TRACTS

350

NO. 2  
RTER AVE.

KODIAK ST.

HINCHINBROOK DR.

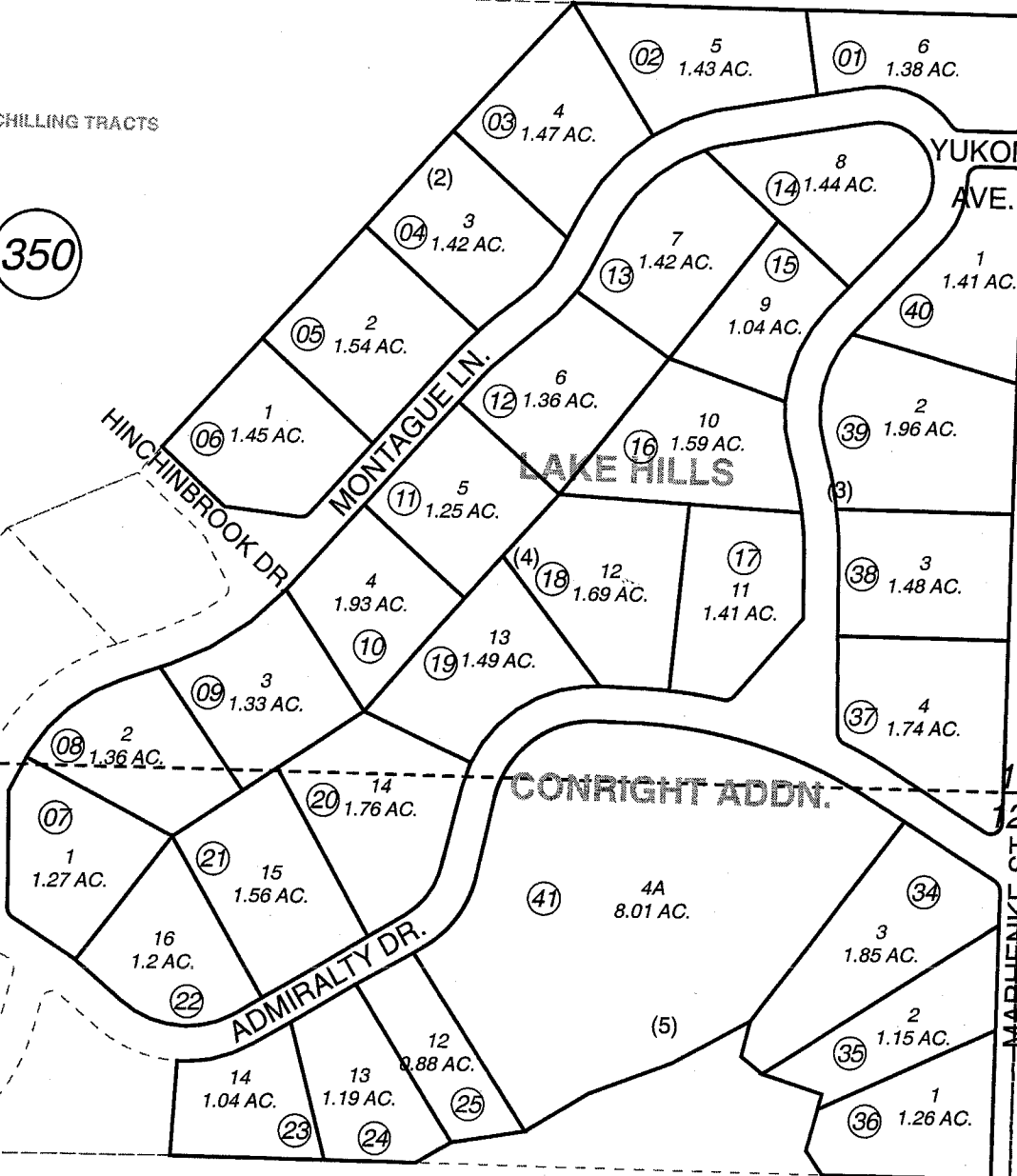
MONTAGUE LN.

YUKON AVE.

NORTH KENAI ROAD  
SUBD. NO. 1

BK  
013

RECTOR ST.



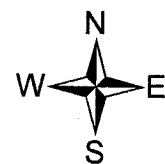
350

LAKE HILLS SUBDIVISION  
CHIRIKOF DRIVE RIGHT-OF-WAY ADDITION

350

JANUARY 5, 2006

For 2006 assessment roll		
Delete	Add	Revise
To		
26-33	41	



Assessor's Map  
Kenai Peninsula Borough

LAKE HILLS SUB KN0780120  
LAKE HILLS SUB CONRIGHT ADDN KN2005117

This map is prepared  
for Kenai Peninsula  
Borough Assessing Dept.  
use only and is not  
intended for conveyance  
nor is it a survey.

Note- Assessor's block Numbers Shown in Ellipses  
Assessor's Parcel Numbers Shown in Circles