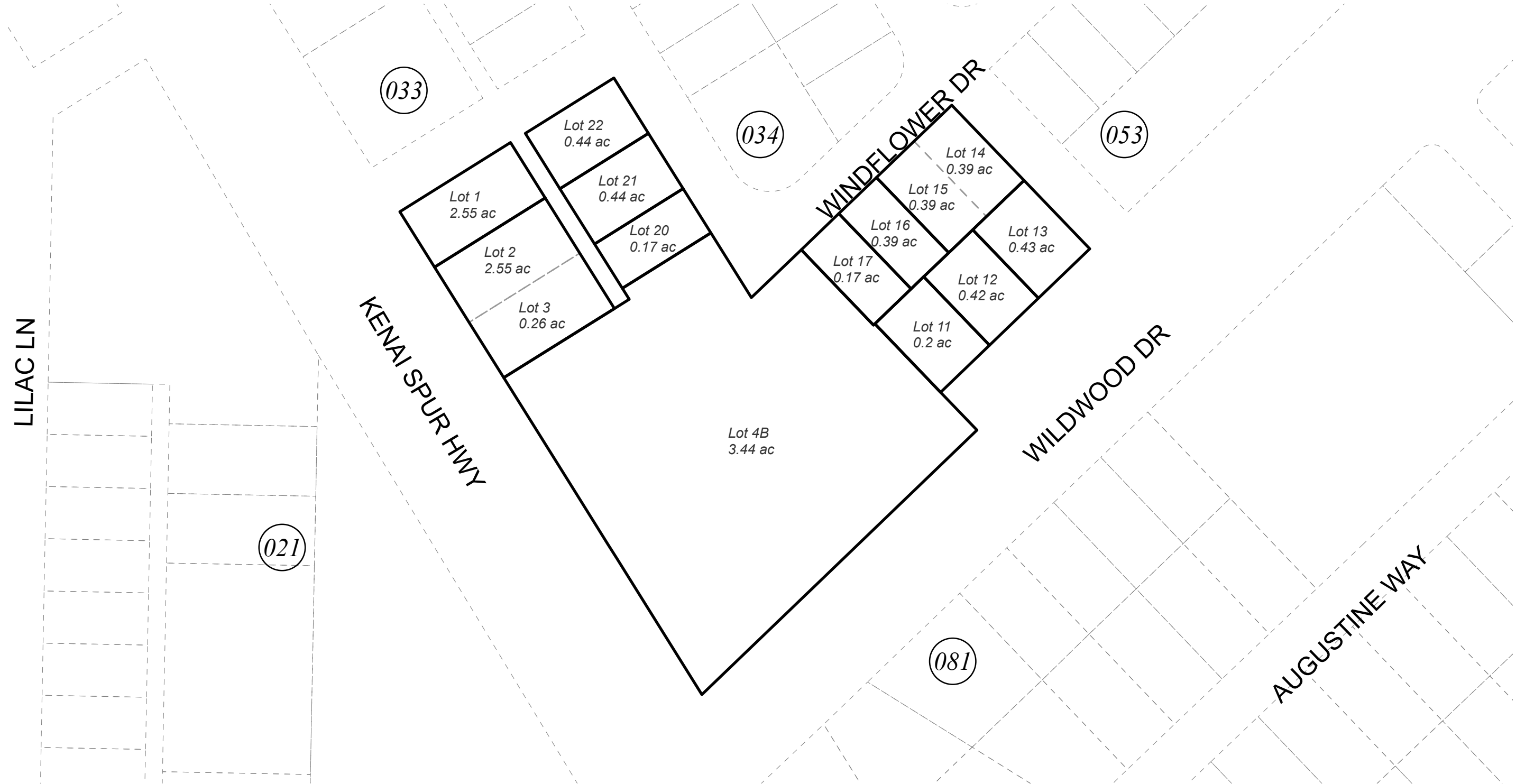


POR. SEC. 25, T06N, R12W, S.M.

039-040



MAY 26, 2022



0 25 50 100 Feet

For 2023 assessment roll		
Delete	Add	Revise
	To	
21	22	

Assessor's Map
Kenai Peninsula Borough

BLACK GOLD ESTATES AMENDED KN0001399
 BLACK GOLD ESTATES SUB NO 2 KN0840076
 BLACK GOLD ESTATES 2021 REPLAT KN2022001

This map is prepared for Kenai Peninsula Borough Assessing Dept. use only and is not intended for conveyance nor is it a survey.
 Note- Assessor's block Numbers Shown in Elipses
 Assessor's Parcel Numbers Shown in Circles