

055-081

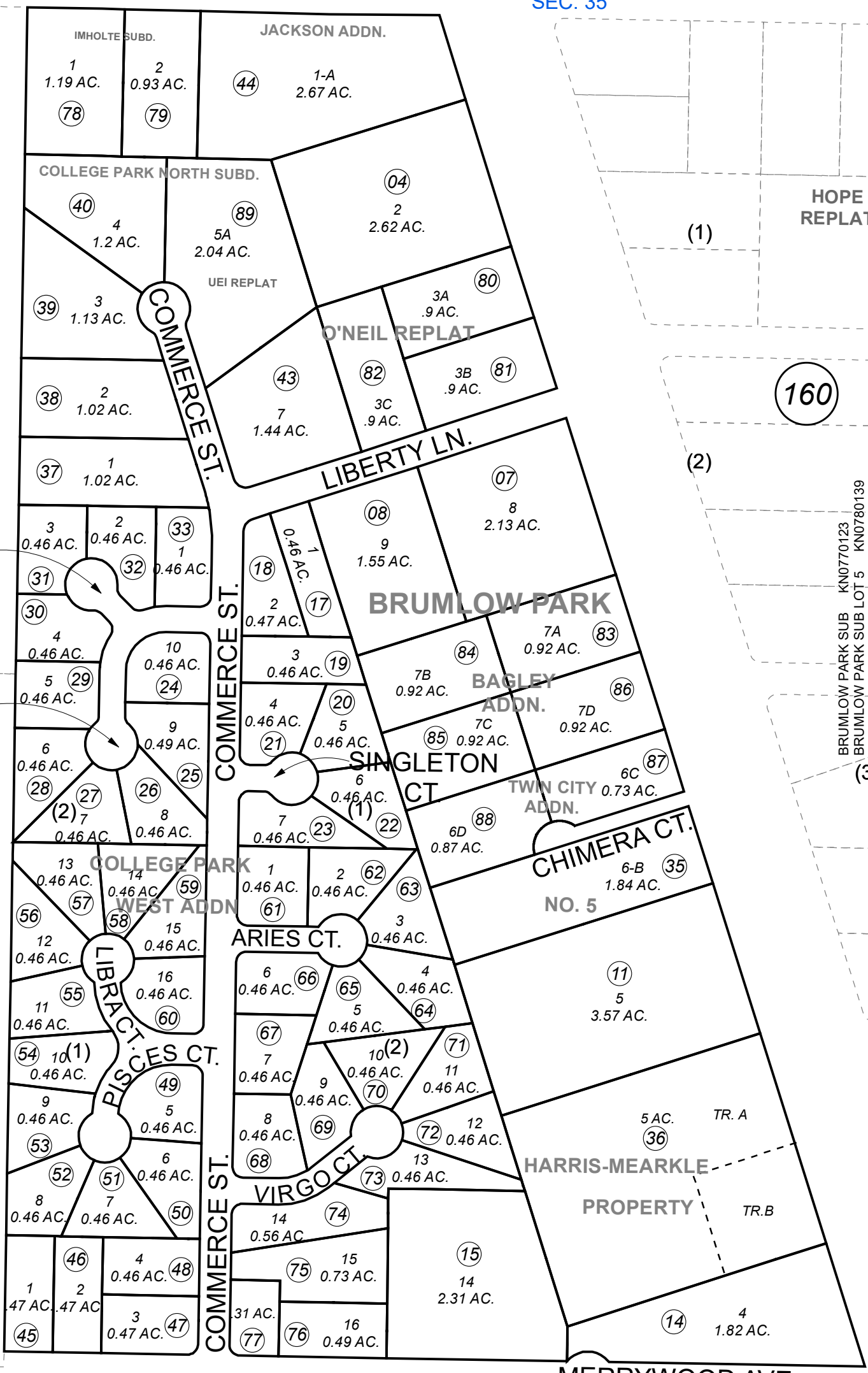
POR. NE 1/4 SEC. 35, T05N, R11W, S.M.

ROXIS
RESUB LOT 5
BLOCK 1
150

W. POPPY LN.

SEC. 26
SEC. 35

This map is prepared for Kenai Peninsula Borough Assessing Dept. use only and is not intended for conveyance nor is it a survey.



073

W PL.

RS CT.

PISCES CT.

LIBRA CT.

COMMERCE ST.

ASHTON PARK SUBD.

COMMERCE ST.

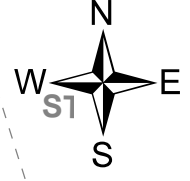
COMMERCE ST.

160

BRUMLOW PARK SUB KN0770123
 BRUMLOW PARK SUB LOT 5 KN0780139
 HARRIS MEARKLE PROPERTIES SUB REPLAT KN0790013
 BRUMLOW PARK SUB ADDN NO 1 KN0830123
 BRUMLOW PARK SUB COLLEGE PARK WEST ADDN KN0830222
 BRUMLOW PARK SUB NO 5 KN0840011
 COLLEGE PARK NORTH SUB KN0940001
 BRUMLOW PARK SUB JACKSON ADDN KN0950019
 ASHTON PARK SUB KN0970074
 IMHOLTE SUB KN0970095
 BRUMLOW PARK SUB O'NEIL REPLAT KN2007053
 BRUMLOW SUB BAGLEY ADDN KN2015014
 BRUMLOW PARK SUB TWIN CITY ADDN KN2018091
 COLLEGE PARK NORTH SUB UEI REPLAT KN2020086

170

NO. 6



0 100 200 Feet

430

ADDN. NO. 1

KALIFONSKY
COMMERCIAL

JANUARY 5, 2021

For 2021 assessment roll	
Delete	Revise
Add	
41,42	89
To	

Note- Assessor's block Numbers Shown in Ellipses Assessor's Parcel Numbers Shown in Circles

Assessor's Map Kenai Peninsula Borough