

PORTION SECTION 1, T4N, R1W, SEWARD MERIDIAN

125-180

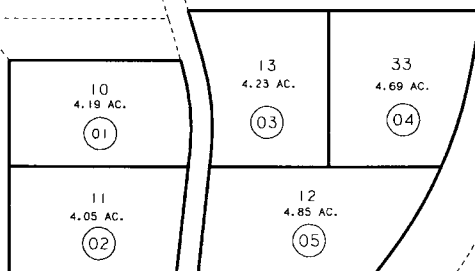
T5N
T4N

1 6
12.7

19

U. S. S. 2528

ALASKA RAILROAD



322

32

322

UPPER

TRAIL LAKE

Assessor's Map
Kenai Peninsula Borough

NOTE - Assessor's Block Numbers Shown In Ellipses
Assessor's Parcel Numbers Shown In Circles

THIS MAP IS PREPARED
FOR KENAI PENINSULA
BOROUGH ASSESSING DEPT.
USE ONLY AND IS NOT
INTENDED FOR ANY
OTHER USE OR REPRESENTATION



DATE: FEB. 24, 1994		
FOR 19 95 ASSESSMENT ROLL		
DELETE	ADD	REVISED
TO		
REV. PG. REF.		