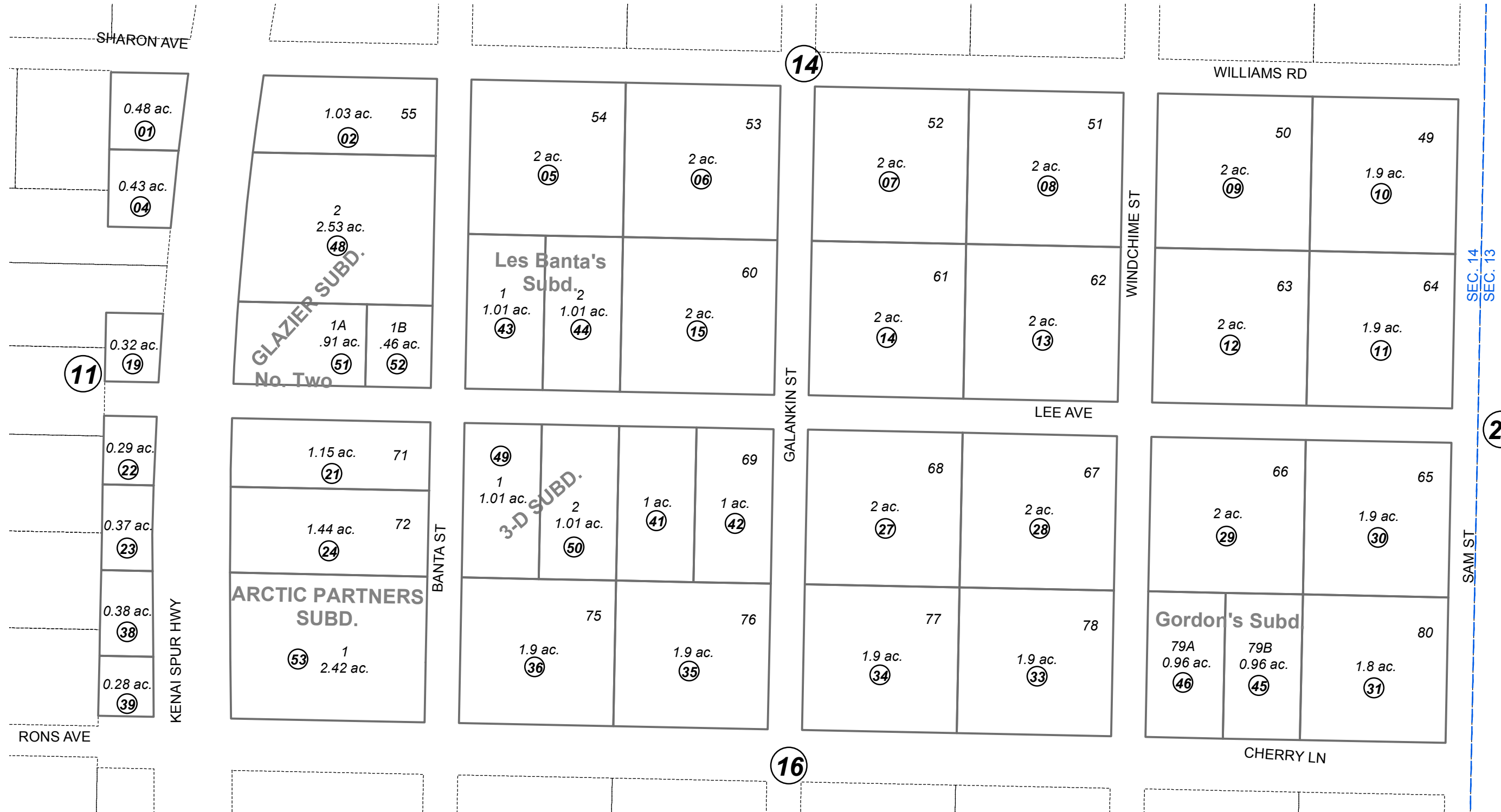


S 1/2 NE 1/4 SEC. 14, T06N, R12W, S.M.

017-150



0 50 100 200 Feet

DECEMBER 1, 2016

For 2017 assessment roll		
Delete	Add	Revise
To		
		22
(ACREAGE CHANGE)		

Assessor's Map  
Kenai Peninsula Borough

LES BANTAS SUB □ KN0840074 □ □  
 GORDONS SUB □ KN0860187 □ □  
 GLAZIER SUB □ KN0910038 □ □  
 3-D SUB □ KN0910059 □ □  
 GLAZIER SUB NO TWO □ KN2001016 □ □  
 RECORD OF SURVEY KN2013054  
 ARCTIC PARTNERS SUB KN2015040  
 RECORD OF SURVEY KN2016064

Note- Assessor's block Numbers Shown in Elipses  
 Assessor's Parcel Numbers Shown in Circles

This map is prepared for Kenai Peninsula Borough Assessing Dept. use only and is not intended for conveyance nor is it a survey.