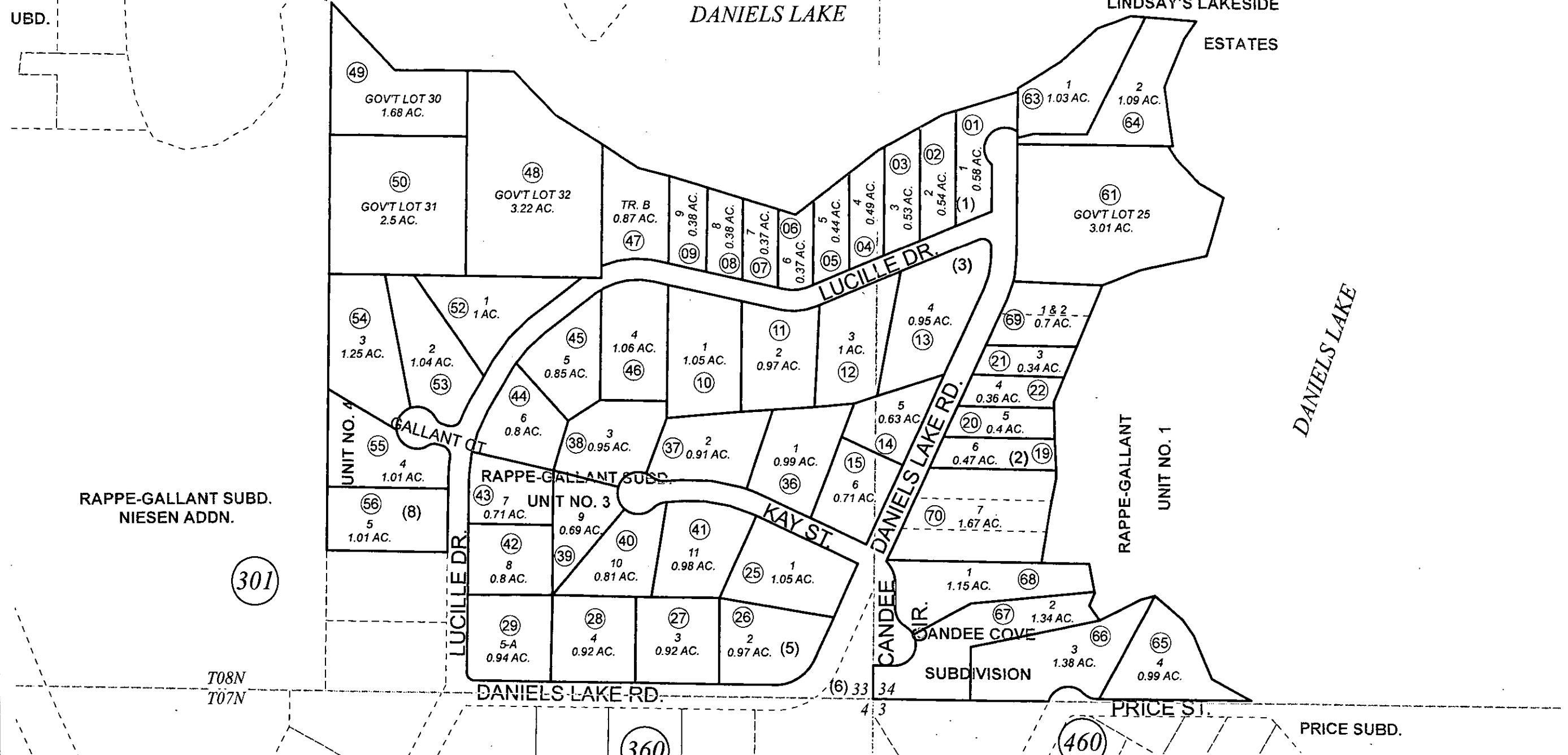


UBD.

DANIELS LAKE

LINDSAY'S LAKESIDE
ESTATES



RAPPE-GALLANT SUBD.
NIESEN ADDN.

301

T08N
T07N

DANIELS LAKE RD.

360

CANDEE COVE
SUBDIVISION

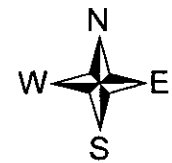
PRICE ST.

460

PRICE SUBD.

JULY 15, 2011

For 2012 assessment roll		
Delete	Add	Revise
		To
	57,58	



0 75 150 300 Feet

Assessor's Map
Kenai Peninsula Borough

RAPPE-GALLANT SUB UNIT 1 KN0001578
 RAPPE-GALLANT SUB UNIT 2 KN0001731
 RAPPE-GALLANT SUB UNIT 3 KN0760153
 RAPPE-GALLANT SUB UNIT 4 KN0780202
 RAPPE-GALLANT SUB UNIT 4 KN0780202
 LINDSAY'S LAKESIDE ESTATES SUB KN0860118
 CANDEE COVE SUB KN0870091

This map is prepared
for Kenai Peninsula
Borough Assessing Dept.
use only and is not
intended for conveyance
nor is it a survey.

Note- Assessor's block Numbers Shown in Ellipses
Assessor's Parcel Numbers Shown in Circles