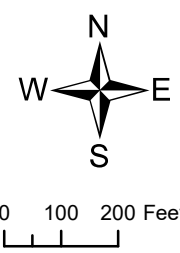
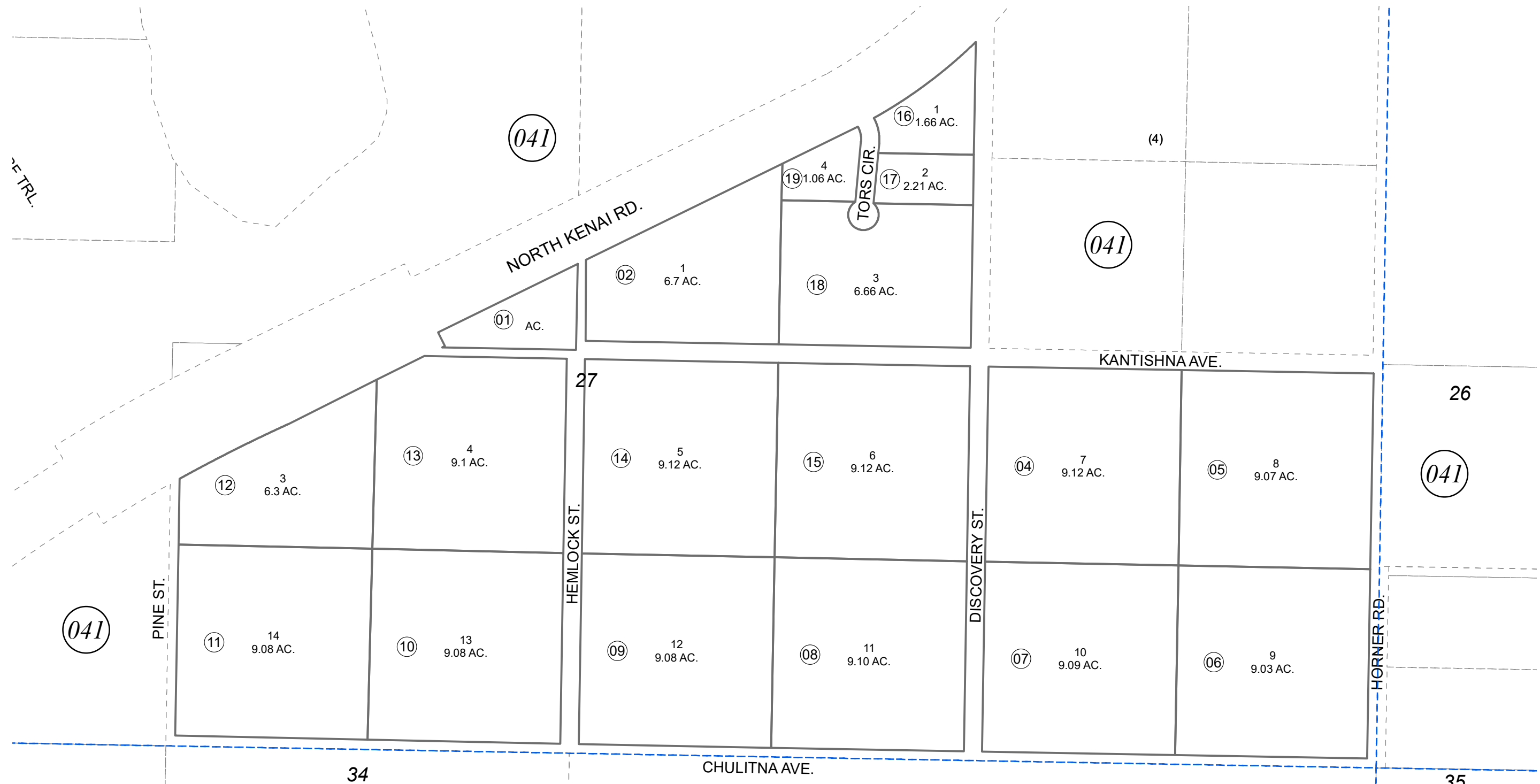


POR. S1/2 SEC. 27, T08N, R11W, S.M.

013-290



JULY 24, 2023

For 2024 assessment roll		
Delete	Add	Revise
To		07
(ACREAGE REVISION)		

Assessor's Map
Kenai Peninsula Borough

NIKISHKA BAY WOODS SUB KN0740012
RECORD OF SURVEY KN2023005
RECORD OF SURVEY KN2023024

This map is prepared for Kenai Peninsula Borough Assessing Dept. use only and is not intended for conveyance nor is it a survey.
Note- Assessor's block Numbers Shown in Elipses
Assessor's Parcel Numbers Shown in Circles