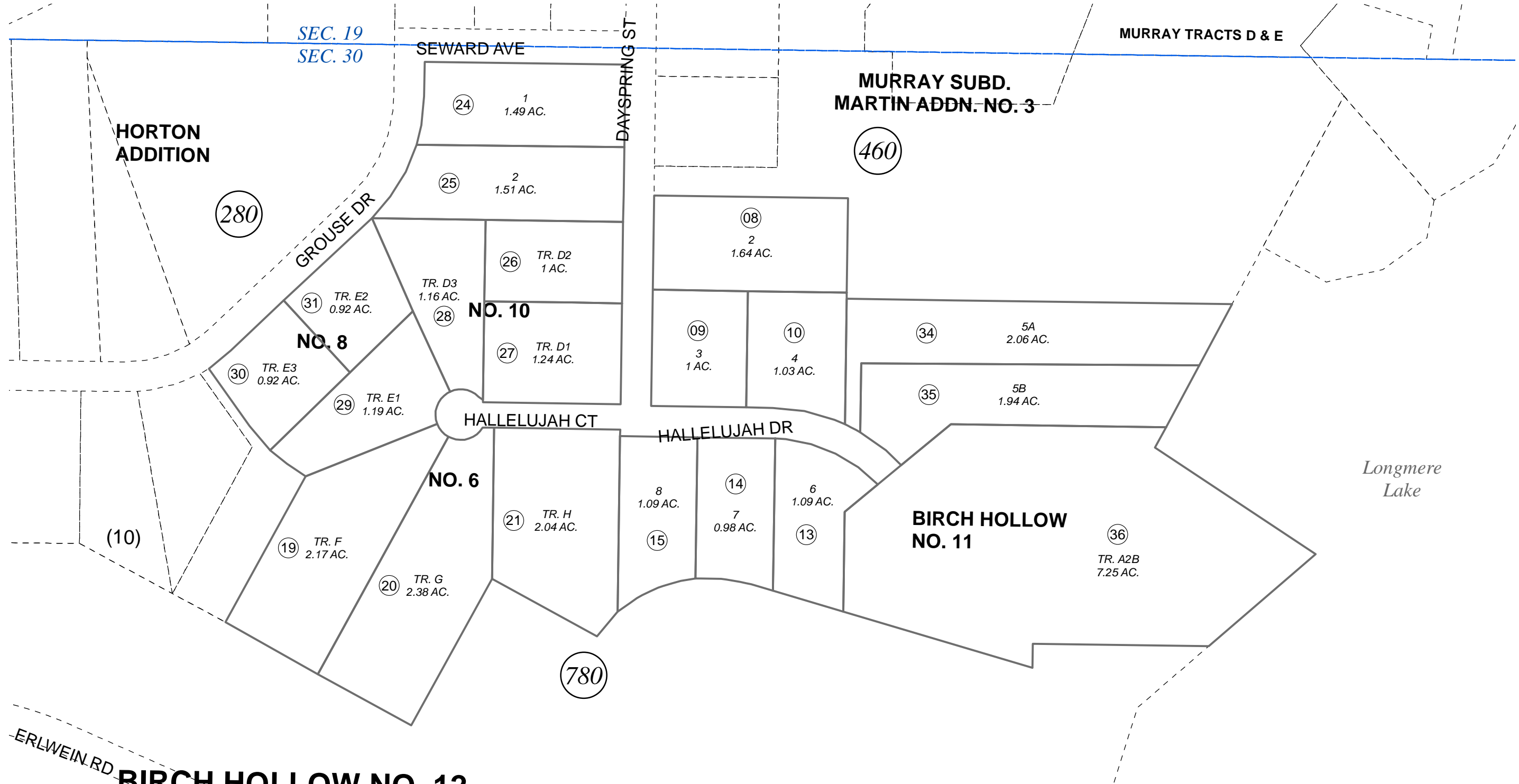


POR. SEC. 30, T05N, R09W, S.M.

063-720



ERLWEIN RD. BIRCH HOLLOW NO. 12

JANUARY 9, 2014



0 50 100 200 Feet

| For 2014 assessment roll | | |
|--------------------------|----------|--------|
| Delete | Add | Revise |
| | To | |
| 23, | | |
| 32 | 063-460+ | |

Assessor's Map
Kenai Peninsula Borough

- BIRCH HOLLOW SUB PART 2 KN0810114
- BIRCH HOLLOW SUB NO 6 KN0830058
- BIRCH HOLLOW SUB NO 3 KN0830245
- BIRCH HOLLOW SUB PART 2 JEAN DITTRICK KN0830249
- BIRCH HOLLOW SUB NO 10 KN0850206
- BIRCH HOLLOW SUB NO 8 KN0860001
- BIRCH HOLLOW SUB PART 2 1987 KN0870128
- BIRCH HOLLOW SUB NO 11 KN0960079

Note- Assessor's block Numbers Shown in Elipses
Assessor's Parcel Numbers Shown in Circles

Longmere
Lake