

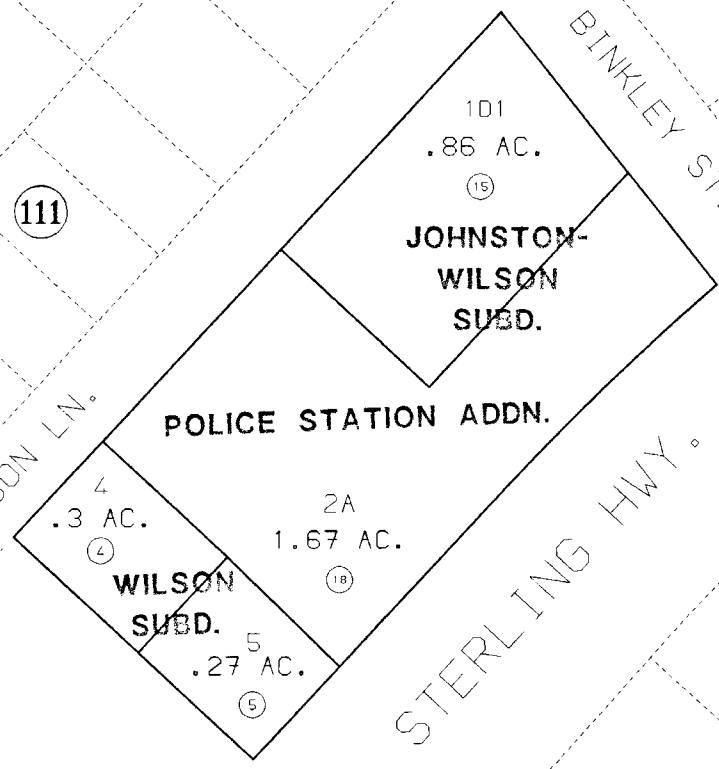
REGER AVE.

BINKLEY ST.

WILSON LN.

STERLING HWY.

BINKLEY CIR.



DATE: MAY 24, 1995

FOR 1996 ASSESSMENT ROLL		
DELETE	ADD	REVISED
2.3.6.	TO	18
16.17		

Assessor's Map
Kenai Peninsula Borough

WILSON KN001741
 JOHNSTON - WILSON KN860128
 BINKLEY ST./SHADY LN. R/W DED. & REPLAT KN880040
 JOHNSTON-WILSON SUB. POLICE STATION ADDN. KN950004

THIS MAP IS PREPARED FOR KENAI PENINSULA BOROUGH ASSESSING DEPT. USE ONLY AND IS NOT INTENDED FOR ANY OTHER USE OR REPRESENTATION.

NOTE - Assessor's Block Numbers Shown In Ellipses
 Assessor's Parcel Numbers Shown In Circles