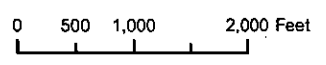
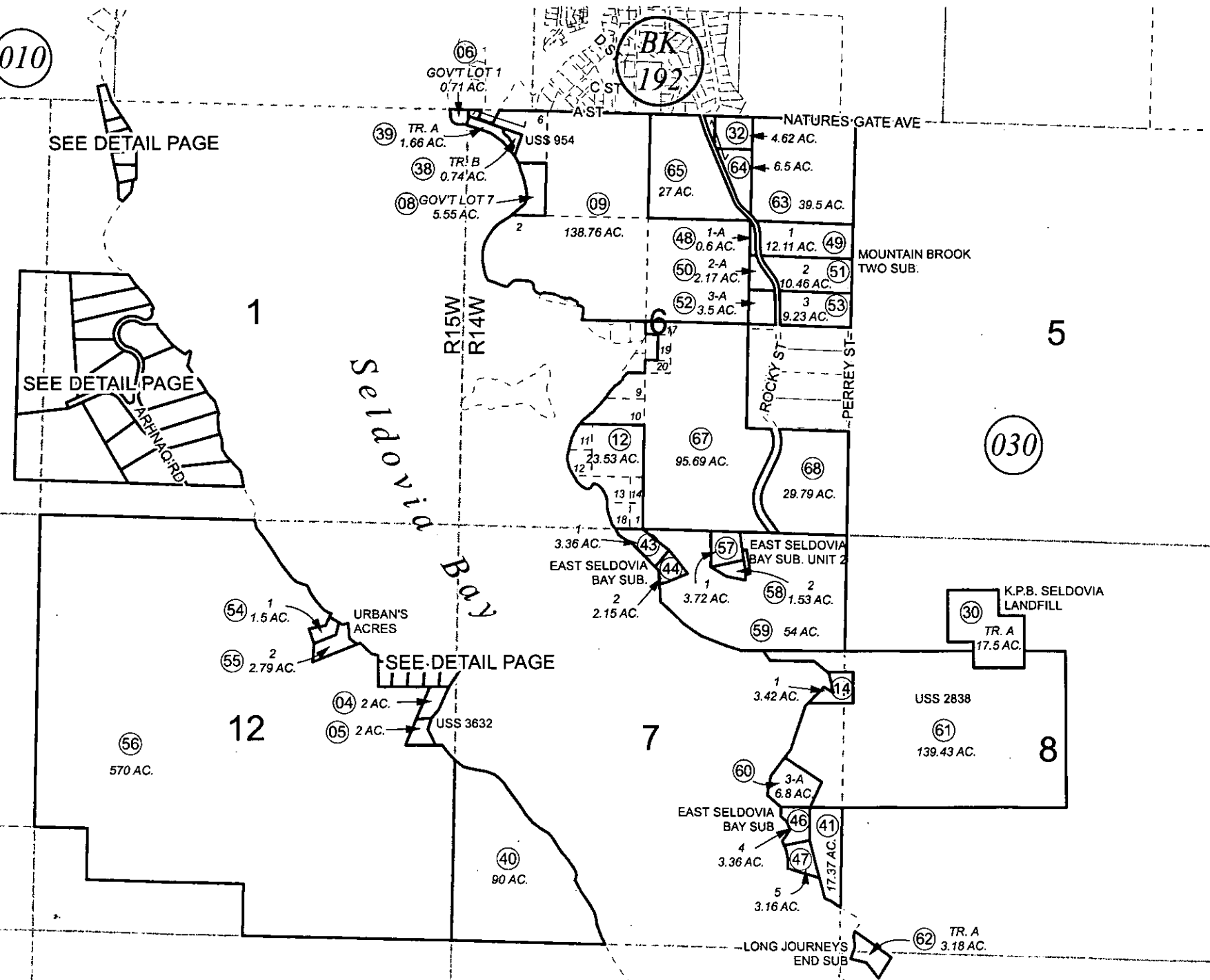


- US SURVEY 2838 SL0002838
- US SURVEY 2869 SL0002869
- US SURVEY 3632 SL0003632
- USS 7676 SL0007676
- KREVIKA POINT SUB SL0760007
- LOSOS COVE SUB SL0760009
- US SURVEY 954 SL0790017
- US SURVEY 954 RETRACEMENT & SUB SL0790017
- EAST SELDOVIA BAY SUB SL0800001
- EAST SELDOVIA BAY SUB SL0800002
- MOUNTAIN BROOK TWO SUB SL0800006
- URBANS ACRES SUB SL0830001
- EAST SELDOVIA BAY SUB UNIT 2 SL0860004
- EAST SELDOVIA BAY SUB UNIT 3 SL0880002
- LONG JOURNEYS END SUB SL0880004
- KENAI PENINSULA BOROUGH SELDOVIA LANDFILL SL0900001
- ROCKY ROAD RW DEDICATION SL0990004
- NAPAQ SUBDIVISION SL2011003



JANUARY 6, 2012

| For 2012 assessment roll | | |
|--------------------------|-------|--------|
| Delete | Add | Revise |
| To | | |
| 66 | 69-85 | |

Assessor's Map
Kenai Peninsula Borough

This map is prepared for Kenai Peninsula Borough Assessing Dept. use only and is not intended for conveyance nor is it a survey.
Note- Assessor's block Numbers Shown in Ellipses
Assessor's Parcel Numbers Shown in Circles