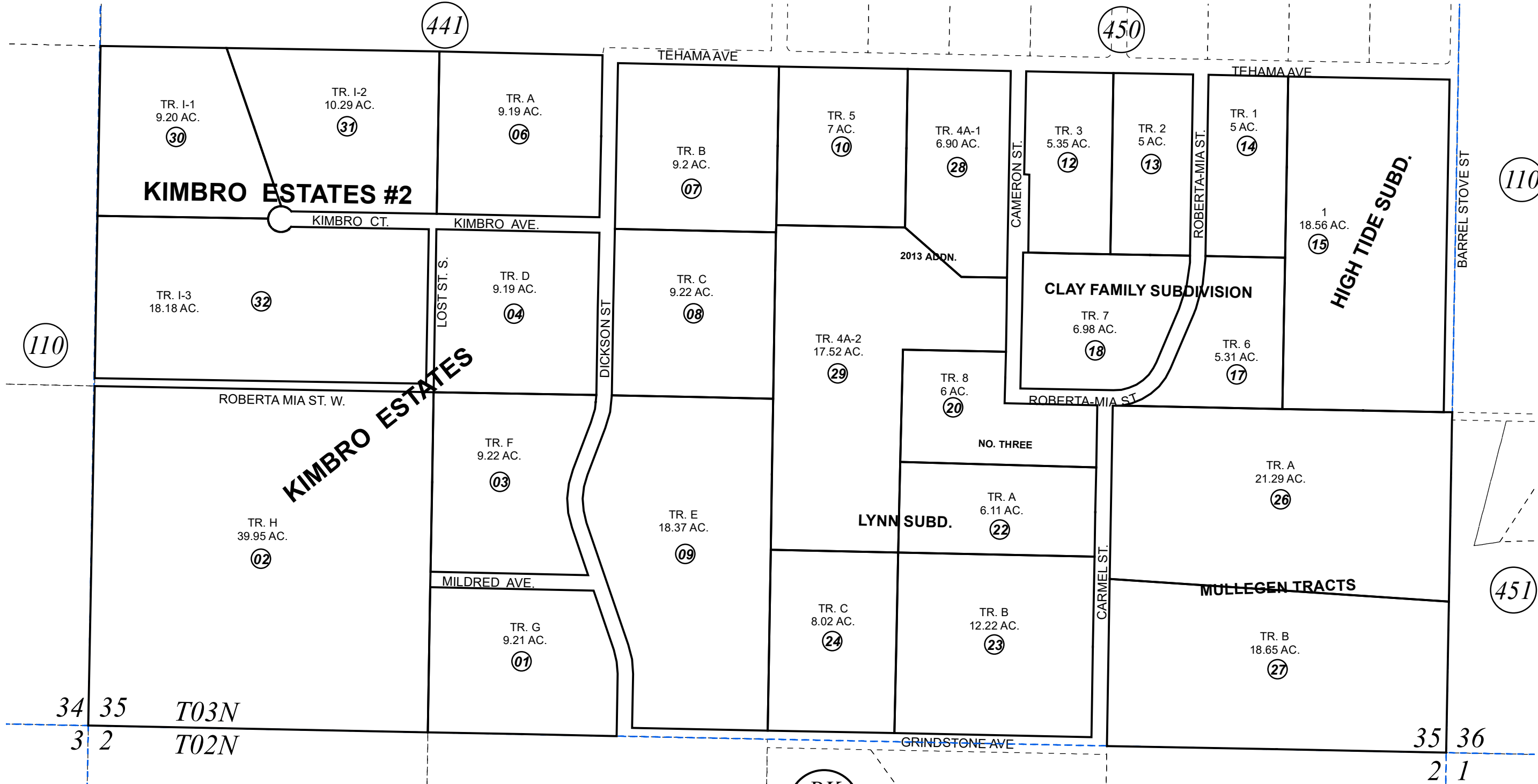


S 1/2 SEC. 35, T03N, R12W, S.M.

133-114



110

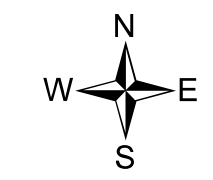
110

451

BK 137

OCTOBER 24, 2018

For 2019 assessment roll		
Delete	Add	Revise
To		
05	30-32	



0 90 180 360 Feet

Assessor's Map
Kenai Peninsula Borough

- KN0820087 HIGH TIDE SUB
- KN0910049 KIMBRO ESTATES SUB
- KN0950049 CLAY FAMILY SUB
- KN0960029 CLAY FAMILY SUB NO 2
- KN0980051 CLAY FAMILY SUB NO 3
- KN2006123 LYNN SUB
- KN2010013 MULLEGEN TRACTS
- KN2013051 LYNN SUBDIVISION 2013 ADDN
- KN2018056 KIMBRO ESTATES SUB #2

This map is prepared for Kenai Peninsula Borough Assessing Dept. use only and is not intended for conveyance nor is it a survey.
Note- Assessor's block Numbers Shown in Ellipses
Assessor's Parcel Numbers Shown in Circles