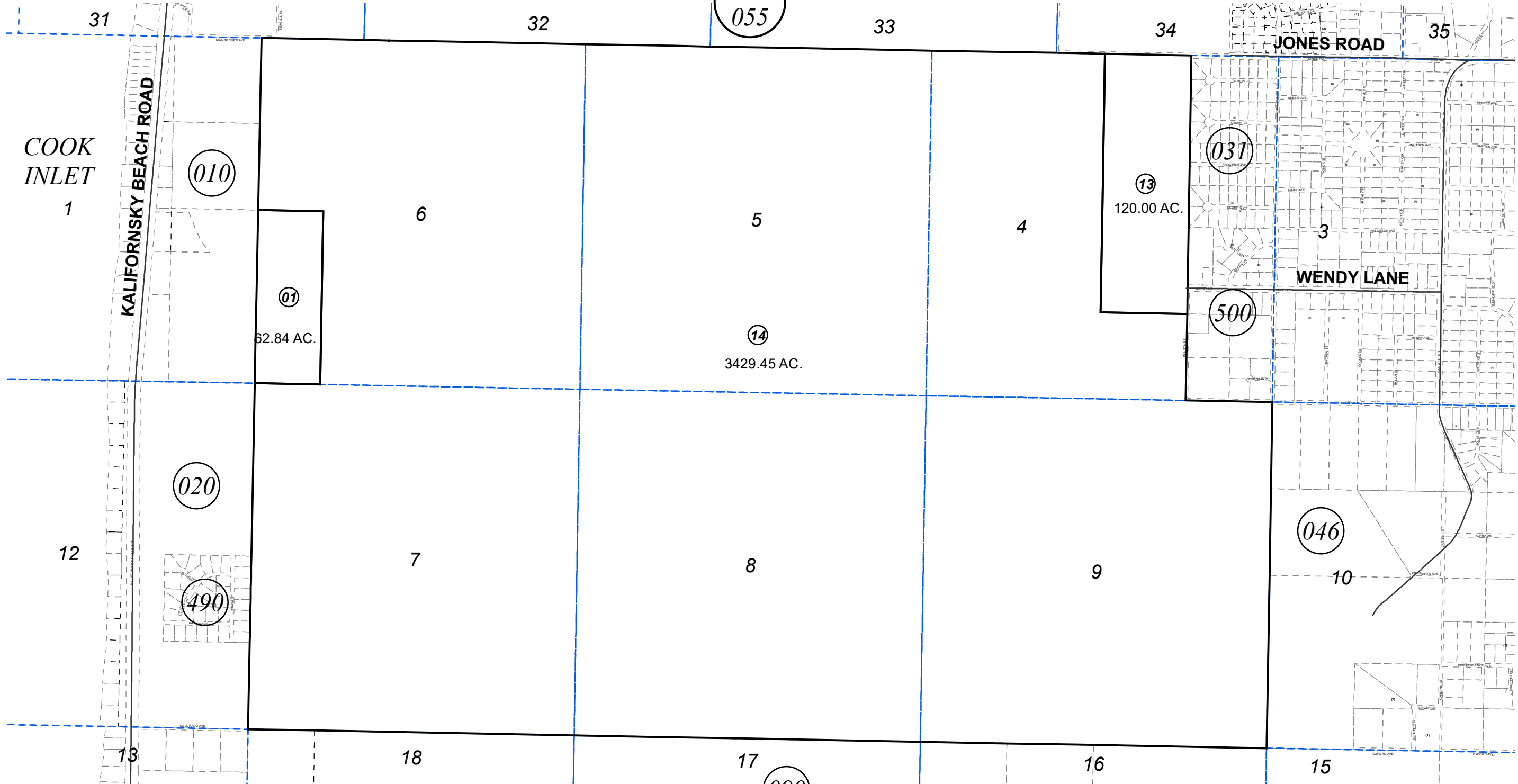


SEC. 4 - 9, T04N, R11W, S.M.

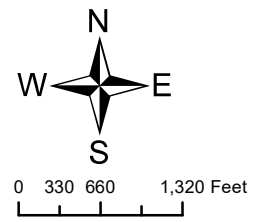
BK
055

131-030



APRIL 17, 2019

For 2020 assessment roll		
Delete	Add	Revise
To		
05	131031+	



Assessor's Map
Kenai Peninsula Borough

This map is prepared for Kenai Peninsula Borough Assessing Dept. use only and is not intended for conveyance nor is it a survey.

Note- Assessor's block Numbers Shown in Elipses
Assessor's Parcel Numbers Shown in Circles