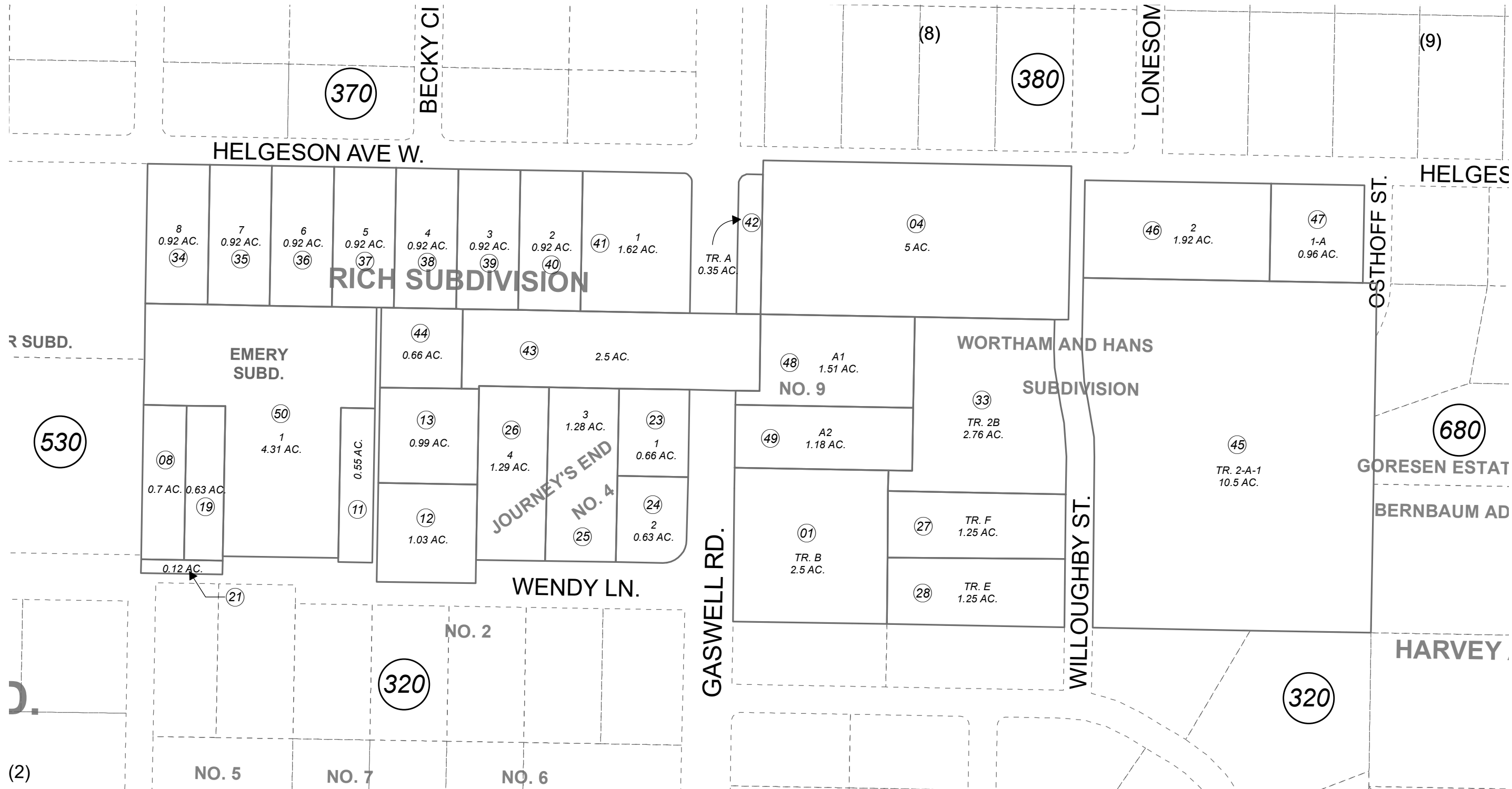


POR. SEC. 3, T04N, R11W, S.M.

131-310

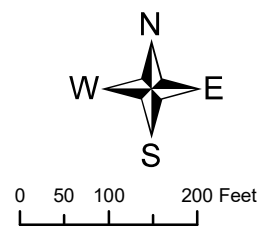


DECEMBER 7, 2021

| For 2022 assessment roll |     |        |
|--------------------------|-----|--------|
| Delete                   | Add | Revise |
|                          | To  |        |
| 07,10,<br>20,22          | 50  |        |

- JOURNEYS END SUB NO 1 KN0720028
- JOURNEYS END SUB NO 2 KN0720029
- JOURNEYS END SUB NO 4 KN0760024
- JOURNEYS END SUB NO 8 KN0820124
- WORTHAM & HANS SUB NO 2 KN0850207
- RICH SUB KN0860199
- WORTHAM & HANS SUB NO 3 KN0890026
- JOURNEYS END SUB NO 9 KN2004076
- EMERY SUB KN2021087

Assessor's Map  
Kenai Peninsula Borough



Note- Assessor's block Numbers Shown in Elipses  
Assessor's Parcel Numbers Shown in Circles

This map is prepared for Kenai Peninsula Borough Assessing Dept. use only and is not intended for conveyance nor is it a survey.