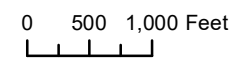
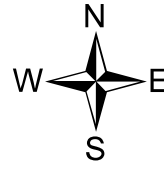
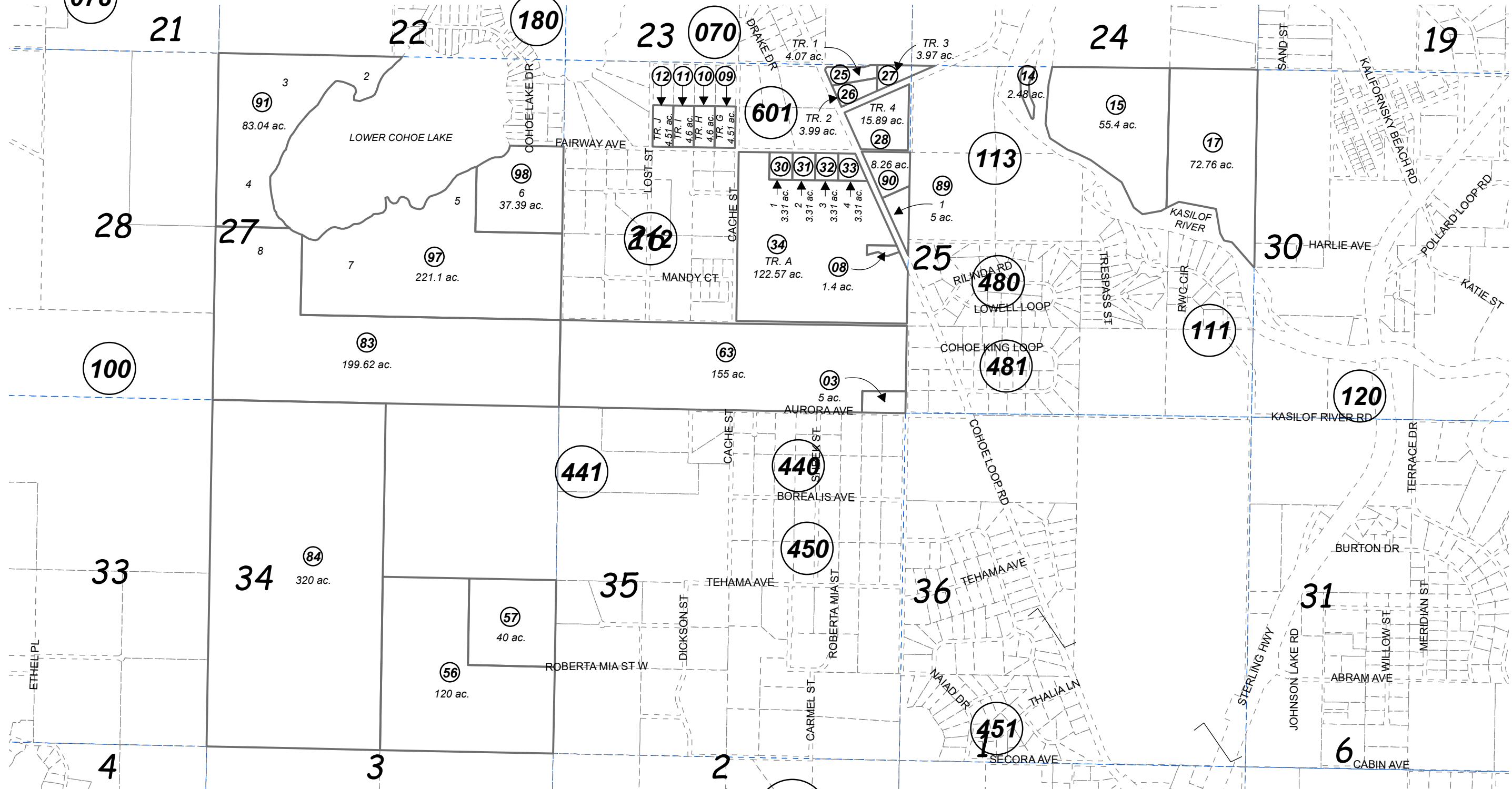


078

SEC. 25, 26, 27, 34, 35, 36, T03N, R12W, S.M.

133-110



JUNE 16, 2023

For 2024 assessment roll		
Delete	Add	Revise
To		
88	133-123	

Assessor's Map
Kenai Peninsula Borough

BK
137

BLAKE SUB KN0880088
RAMSELL TRACTS #4 KN2011036
RAMSELL SUB 2014 ADDN KN2014060
STERLING HWY SHOULDER WIDENING KN2021002
KINDER SUB KN2022061

This map is prepared for Kenai Peninsula Borough Assessing Dept. use only and is not intended for conveyance nor is it a survey.
Note- Assessor's block Numbers Shown in Elipses
Assessor's Parcel Numbers Shown in Circles