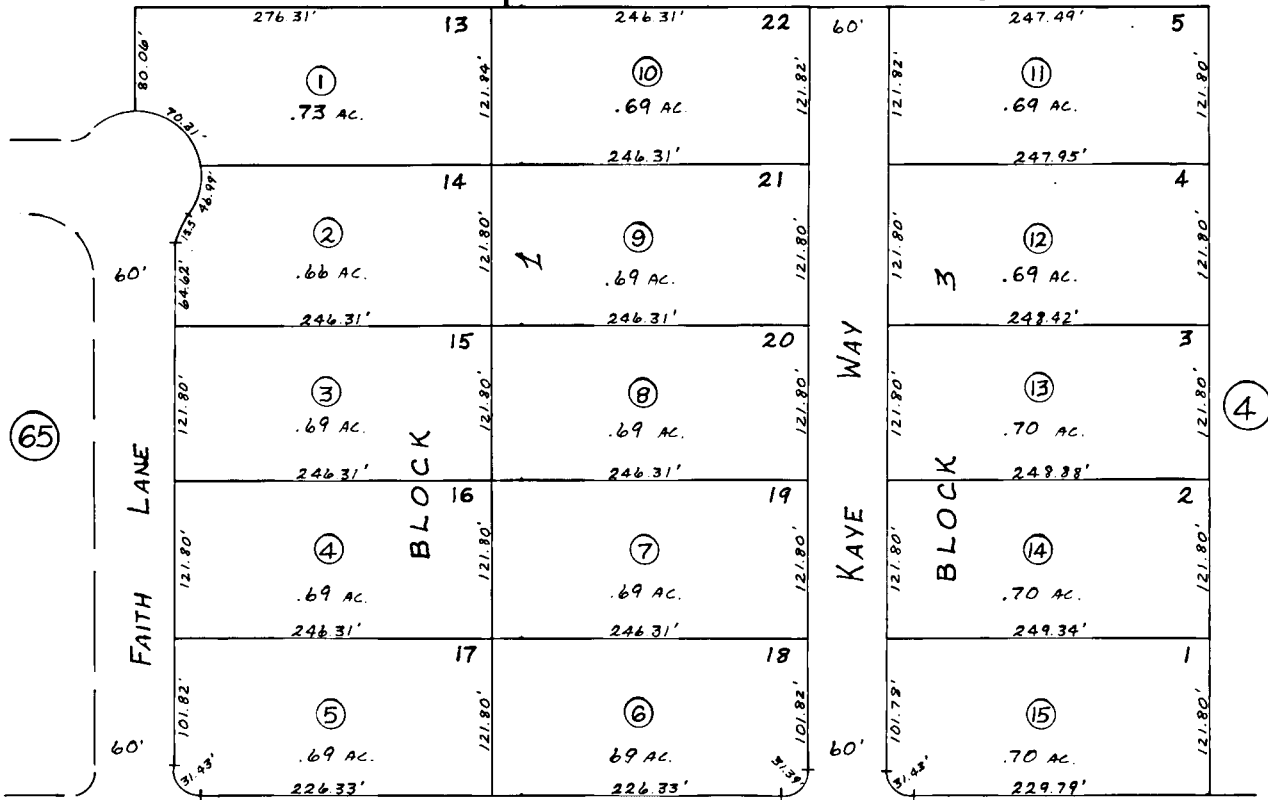


BETTY GOODRICH SUB. NO. 2

④

K-31-72



⑥5

④

100'

ECHO LAKE ROAD

100'

④

Assessor's Map
Kenai Peninsula Borough, Alaska

NOTE - Assessor's Block Numbers Shown in Ellipses
Assessor's Parcel Numbers Shown in Circles