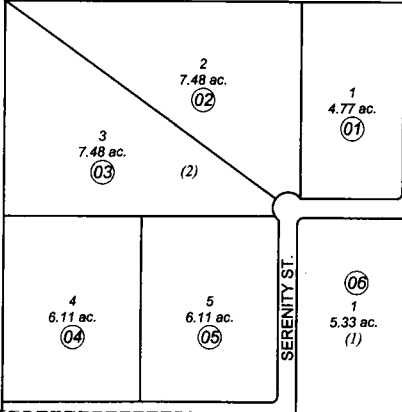


040

030

07
120.10 ac.

PLEASANT VIEW ESTATES



670

ECHO HILLS SUBDIV.

NO. 2

NO. 6

NO. 7

NO. 5

9 10
16 15

090



OCTOBER 2, 2003

For 2004 assessment roll		
Delete	Add	Revise
To		
NEW PAGE		

Assessor's Map
Kenai Peninsula Borough

PLEASANT VIEW ESTATES KN2003034

This map is prepared for Kenai Peninsula Borough Assessing Dept. use only and is not intended for conveyance nor is it a survey.

Note- Assessor's block Numbers Shown in Ellipses
Assessor's Parcel Numbers Shown in Circles