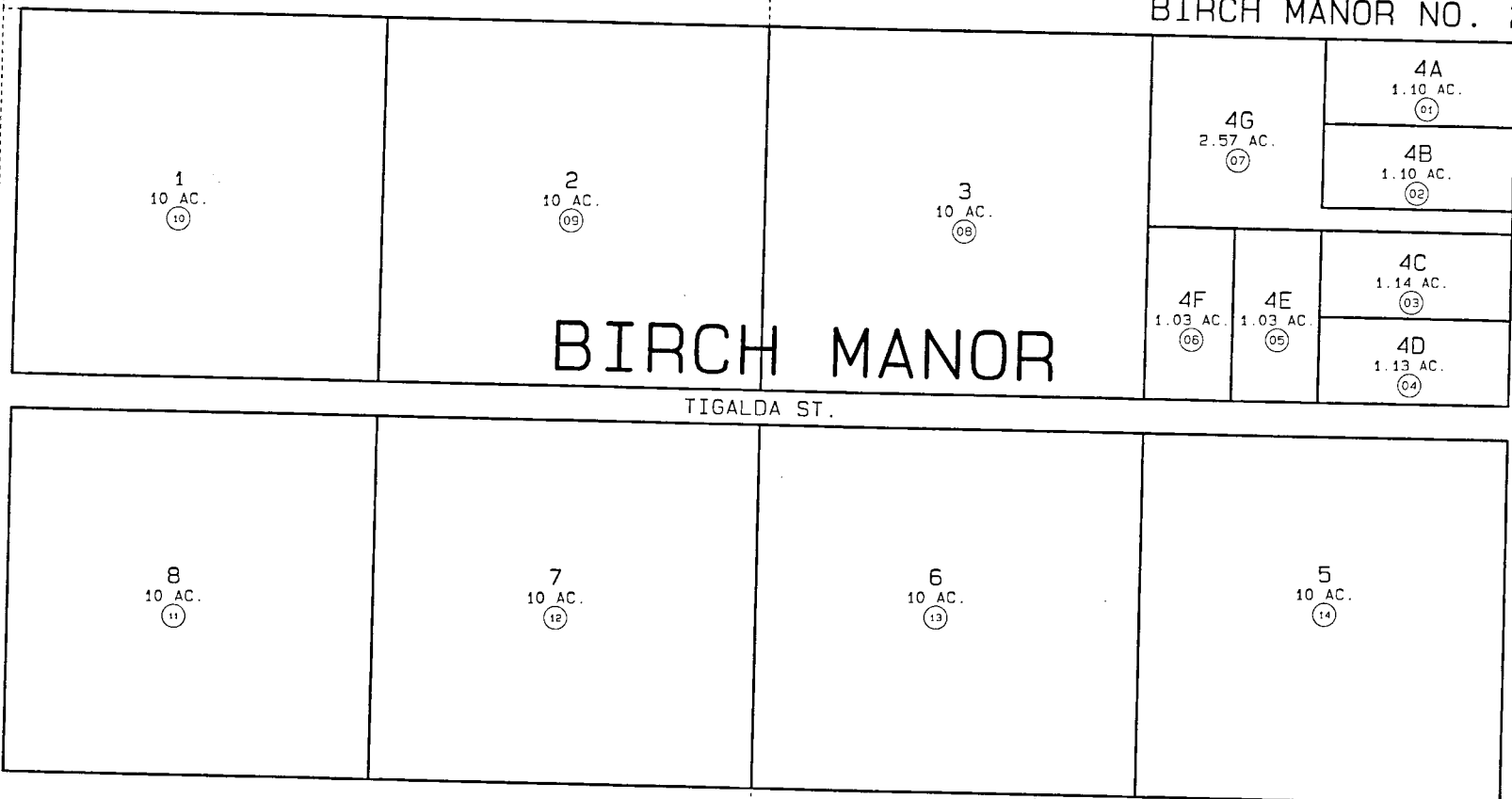


62

BIRCH MANOR NO. 2



BIRCH MANOR

TIGALDA ST.

MELOTT AVE.

TANADAK ST.

KISKA ST.

591

17

60



DATE: DEC. 23, 1997

FOR 1998 ASSESSMENT ROLL		
DELETE	ADD	REVISED
TO		
ADDED AMENDED		
PLAT NOTE		

Assessor's Map  
Kenai Peninsula Borough

BIRCH MANOR KN001658  
BIRCH MANOR NO. 2 KN960078  
BIRCH MANOR NO 2 AMENDED KN970061

THIS MAP IS PREPARED FOR KENAI PENINSULA BOROUGH ASSESSING DEPT. USE ONLY AND IS NOT INTENDED FOR ANY OTHER USE OR REPRESENTATION

NOTE - Assessor's Block Numbers Shown In Ellipses  
Assessor's Parcel Numbers Shown In Circles

SEC. 28  
SEC. 27