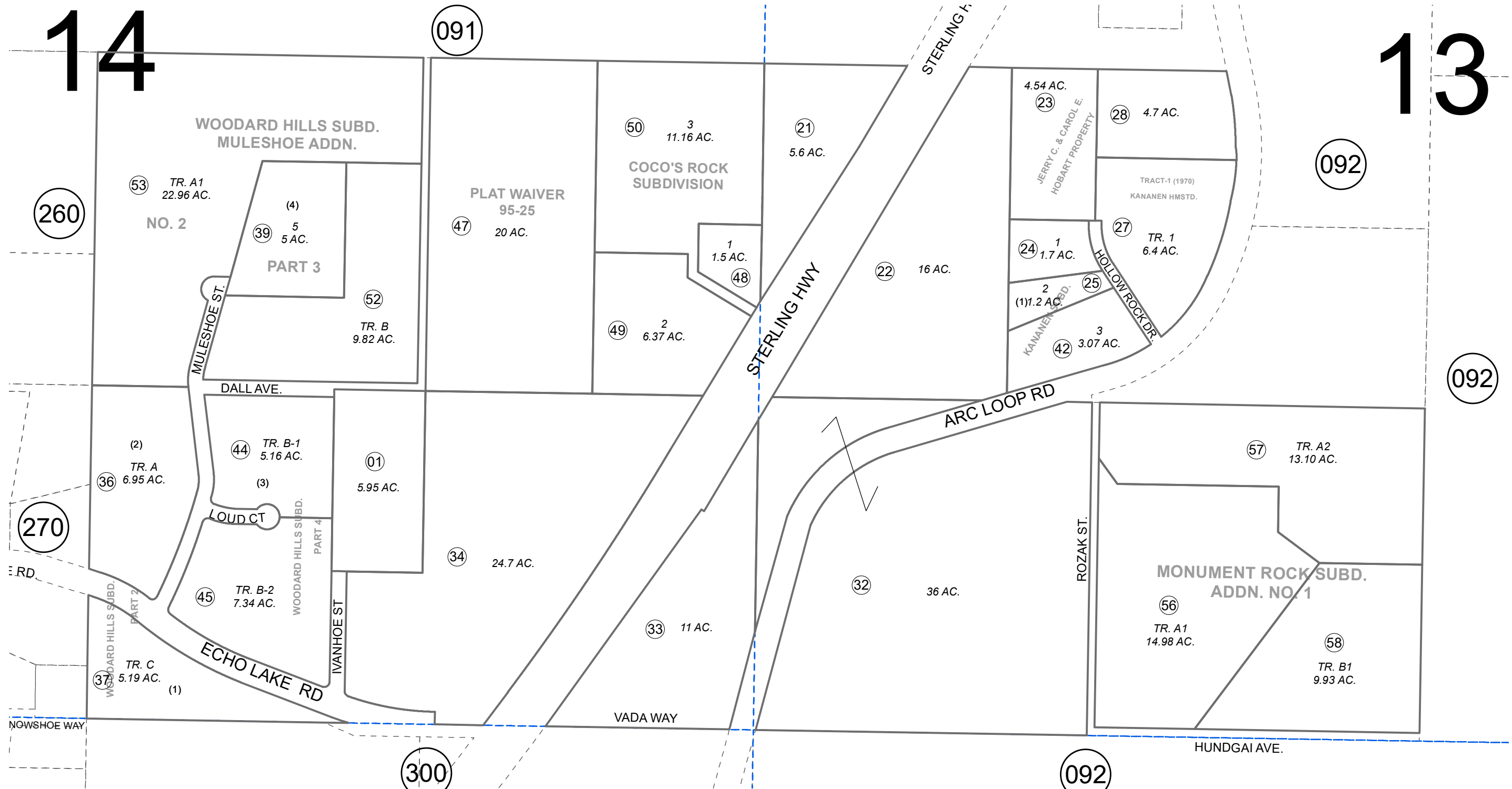


14

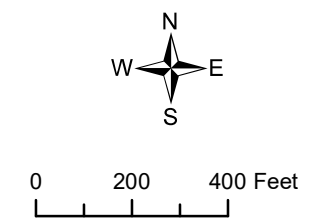
13



AUGUST 12, 2022

For 2023 assessment roll		
Delete	Add	Revise
To		
43		
(MAP CORRECTION)		

- R M KAMANEN HOMESTEAD SUB □ KN0001705
- KANANEN SUB □ KN0001723
- WOODARD HILLS SUB PART 2 □ KN0880074
- WOODARD HILLS SUB PART 3 □ KN0890051
- WOODARD HILLS SUB PART 4 □ KN0920004
- COCO'S ROCK SUB □ KN2007099
- WOODARD HILLS SUB MULESHOE ADDN KN2009096
- WOODARD HILLS SUB MULESHOE ADDN NO 2 KN2010060
- MONUMENT ROCK SUB KN2018027
- MONUMENT ROCK SUB ADDN NO 1 KN2021006



Assessor's Map
Kenai Peninsula Borough

This map is prepared for Kenai Peninsula Borough Assessing Dept. use only and is not intended for conveyance nor is it a survey.

Note- Assessor's block Numbers Shown in Ellipses
Assessor's Parcel Numbers Shown in Circles