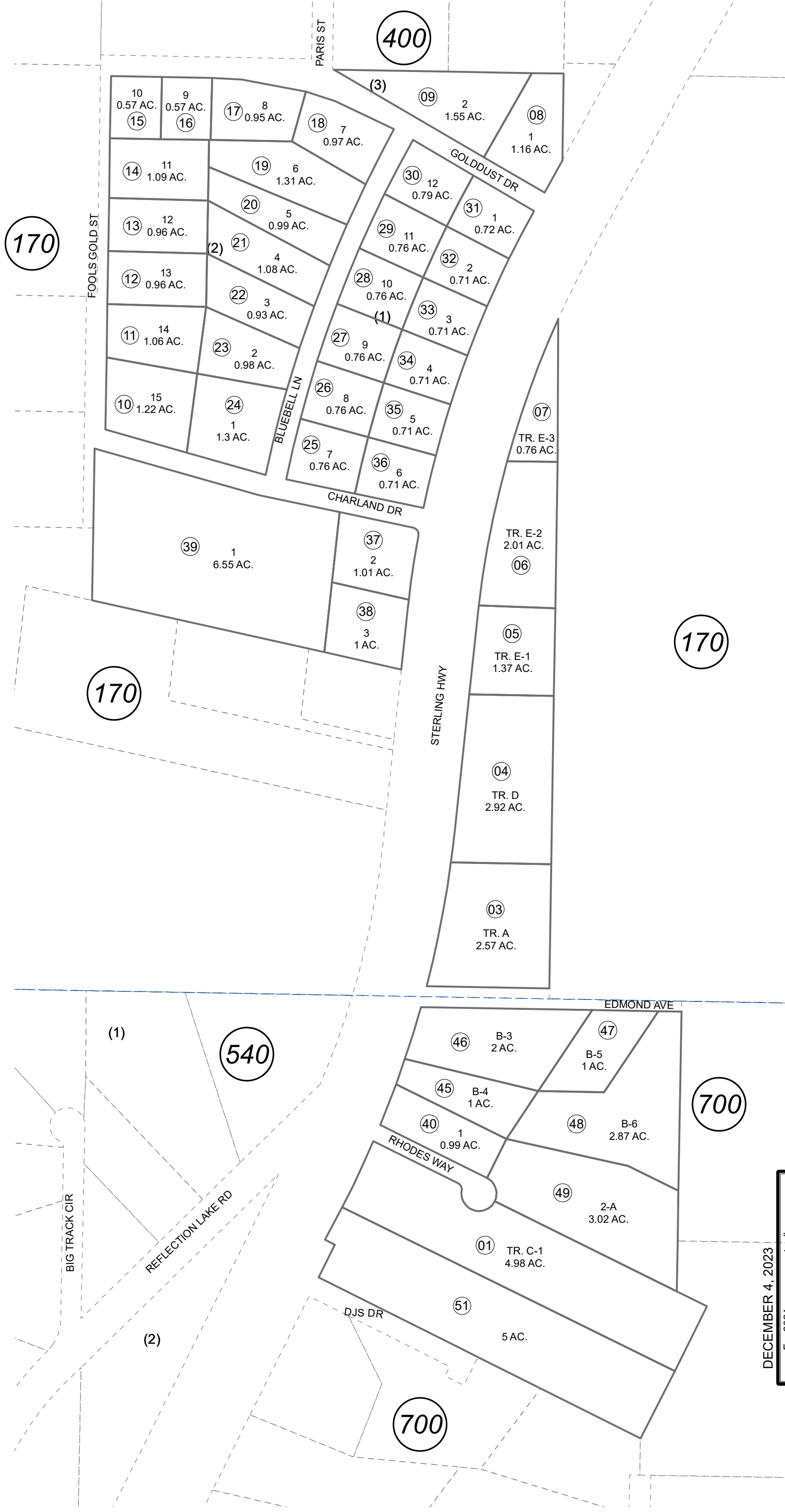


POR. SEC. 27, 34, T04N, R11W, S.M.

131-480



DECEMBER 4, 2023

For 2024 assessment roll	
Delete	Add
	Revise
To	131-700+
50	



This map is prepared for Kenai Peninsula Borough Assessing Dept. use only and is not intended for conveyance nor is it a survey.

Note- Assessor's block Numbers Shown in Ellipses
Assessor's Parcel Numbers Shown in Circles

CHAR SUB ADDN NO 1 DILLEY REPLAT KN0880057
MALLETT HOMESTEAD SUB NO 1 KN0910034

Assessor's Map
Kenai Peninsula Borough