

13

18

KACHEMAK BAY

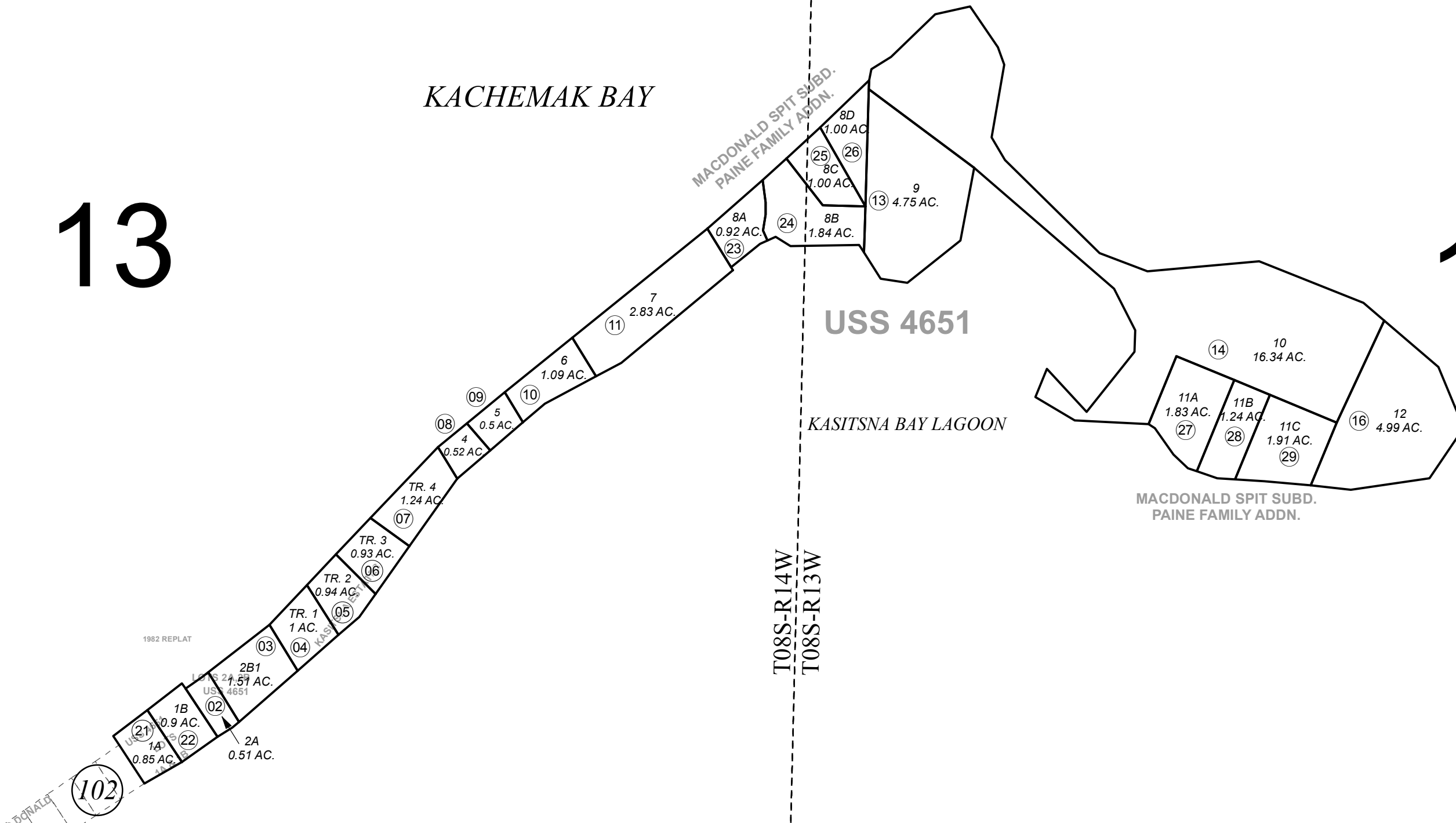
MACDONALD SPIT SUBD.
PAINE FAMILY ADDN.

USS 4651

KASITSNA BAY LAGOON

MACDONALD SPIT SUBD.
PAINE FAMILY ADDN.

T08S-R14W
T08S-R13W

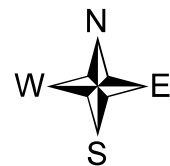


1982 REPLAT

1982 REPLAT
US SURVEY 4651
RESUB LOTS 2 B & 3
SL0820005
KASITSNA ESTATES SUB
SL0820007
US SURVEY 4651 LOTS 1A & 1B
SL0870008
MAC DONALD SPIT SUB
PAINE FAMILY ADDN
SL2017006

JULY 6.2017

For 2018 assessment roll		
Delete	Add	Revise
	To	
12,15	23-29	



0 120 240 480 Feet

Assessor's Map
Kenai Peninsula Borough

US SURVEY 4651 SL0004651
US SURVEY 4651 RESUB LOT 2 SL0710098
US SURVEY 4651 RESUB LOTS 2 B & 3 SL0820005
KASITSNA ESTATES SUB SL0820007
US SURVEY 4651 LOTS 1A & 1B SL0870008
MAC DONALD SPIT SUB PAINE FAMILY ADDN SL2017006

This map is prepared for Kenai Peninsula Borough Assessing Dept. use only and is not intended for conveyance nor is it a survey.

Note- Assessor's block Numbers Shown in Elipses
Assessor's Parcel Numbers Shown in Circles