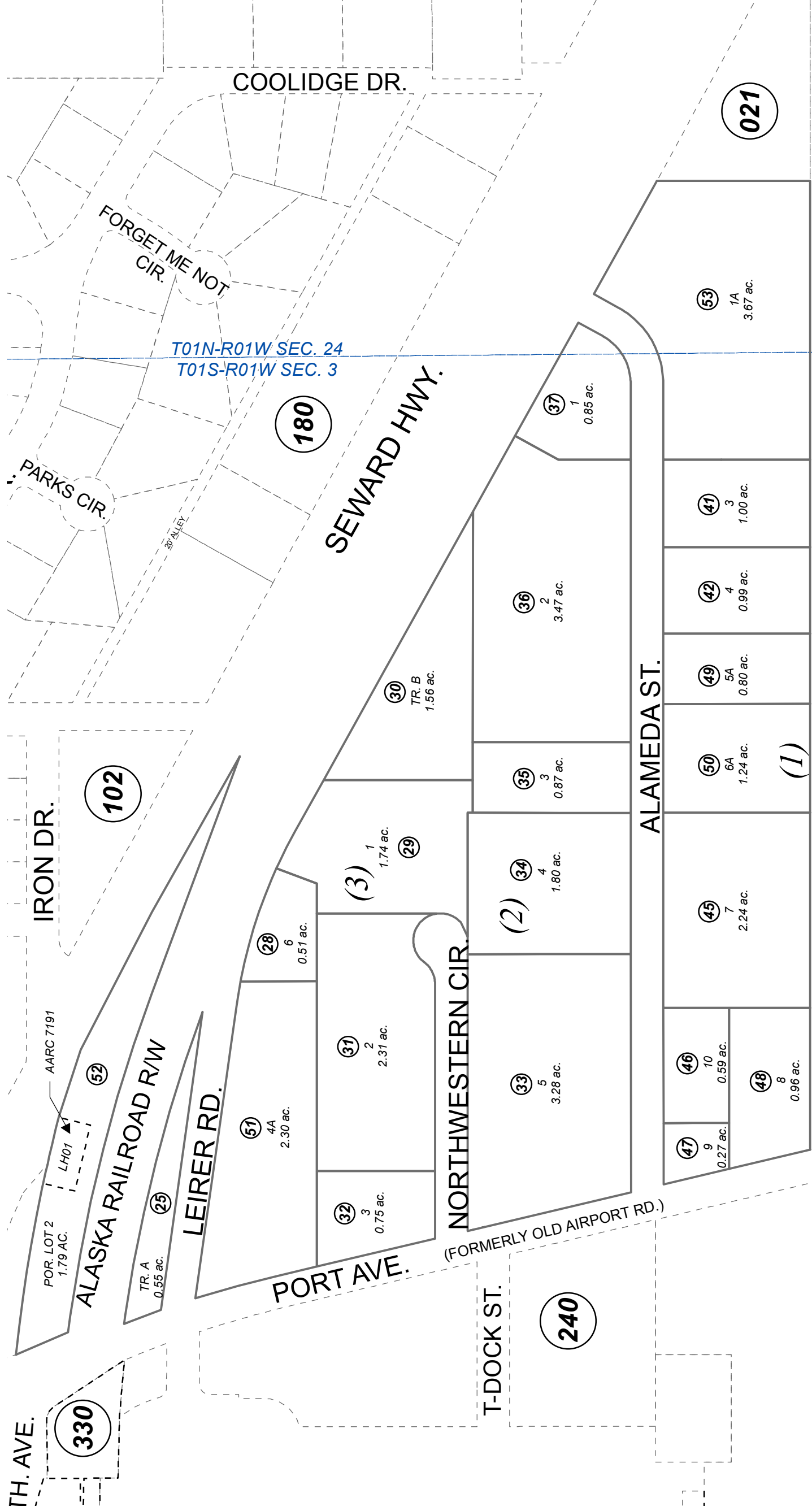


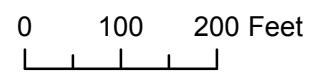
POR. SEC. 34, T01N, R01W & POR. NW1/4 SEC. 3, T01S, R01W, S.M. 145-250



BECKER REPLAT LEIRER INDUSTRIAL SUBDIVISION

NOVEMBER 14, 2014

For 2015 assessment roll		
Delete	Add	Revise
	To	53
38-40		



LEIRER INDUSTRIAL SUB SW2002019
 LEIRER INDUSTRIAL SUB BECKER REPLAT SW2003012
 LEIRER INDUSTRIAL SUB ICICLE SEAFOODS REPLAT SW20070008
 LEIRER INDUSTRIAL SUB AVTEC REPLAT SW2014026

Assessor's Map
 Kenai Peninsula Borough

Assessor's block Numbers Shown in Ellipses
 Assessor's Parcel Numbers Shown in Circles

This map is prepared for Kenai Peninsula Borough Assessing Dept. use only and is not intended for conveyance nor is it a survey.