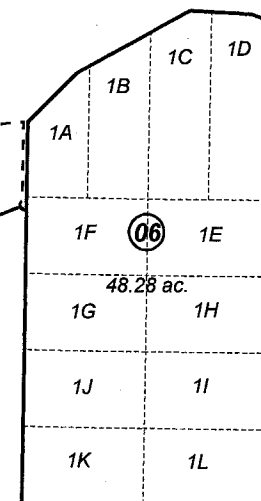


POR. SEC. 17-20, T05S, R10W, S.M.

193-250

### KACHEMAK BAY

CHUGACHIK ISLAND



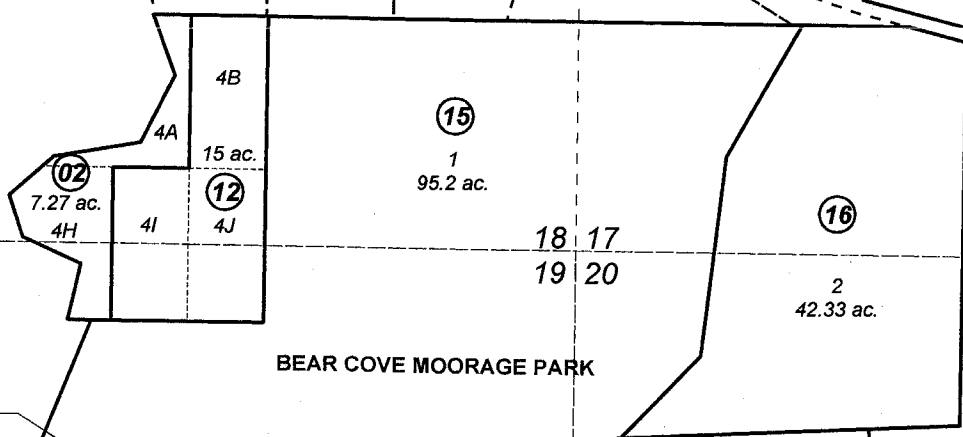
(011)

DICKSON SUBDIVISION (USS 3018)

(251)

### BEAR COVE FARM SUBD.

(18)  
TR. A  
168.44 AC.



(17)  
3  
4.97 ac.

LOONHAUNT SUBDIVISION

(14)  
68.57 ac.

USS 1773

(13)  
TR. 1  
2.62 ac.

(011)

### BEAR COVE

(252)



NOVEMBER 9, 2007

| For 2008 assessment roll |     |        |
|--------------------------|-----|--------|
| Delete                   | Add | Revise |
| To                       |     |        |
| 8-10                     | 18  |        |

Assessor's Map  
Kenai Peninsula Borough

US SURVEY 1773 □ HM0001773  
 US SURVEY 3355 □ HM0003355  
 LOONHAUNT SUB □ HM2002073  
 BEAR COVE MOORAGE PARK HM2006097  
 BEAR COVE FARM SUB HM2007091

This map is prepared for Kenai Peninsula Borough Assessing Dept. use only and is not intended for conveyance nor is it a survey.

Note- Assessor's block Numbers Shown in Elipses  
 Assessor's Parcel Numbers Shown in Circles