

PTN. SECS. 19 & 30 T. 5 S., R. 10 W.  
 PTN. SECS. 24 & 25 T. 5 S., R. 11 W. SM

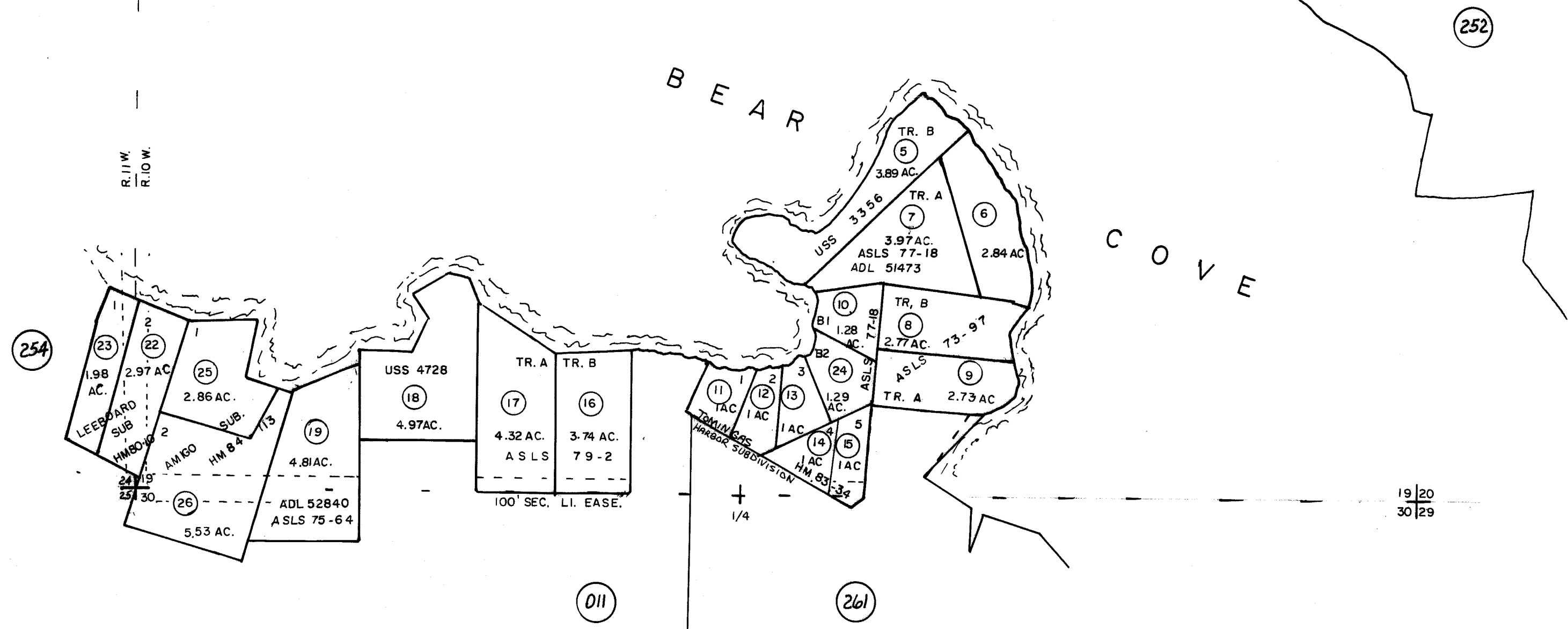
193-253

CEN.  
 +

1/4  
 +

+  
 |  
 -

R. 11 W.  
 R. 10 W.



Assessor's Map  
 Kenai Peninsula Borough, Alaska

NOTE - Assessor's Block Numbers Shown in Ellipses  
 Assessor's Parcel Numbers Shown in Circles