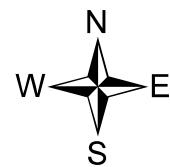
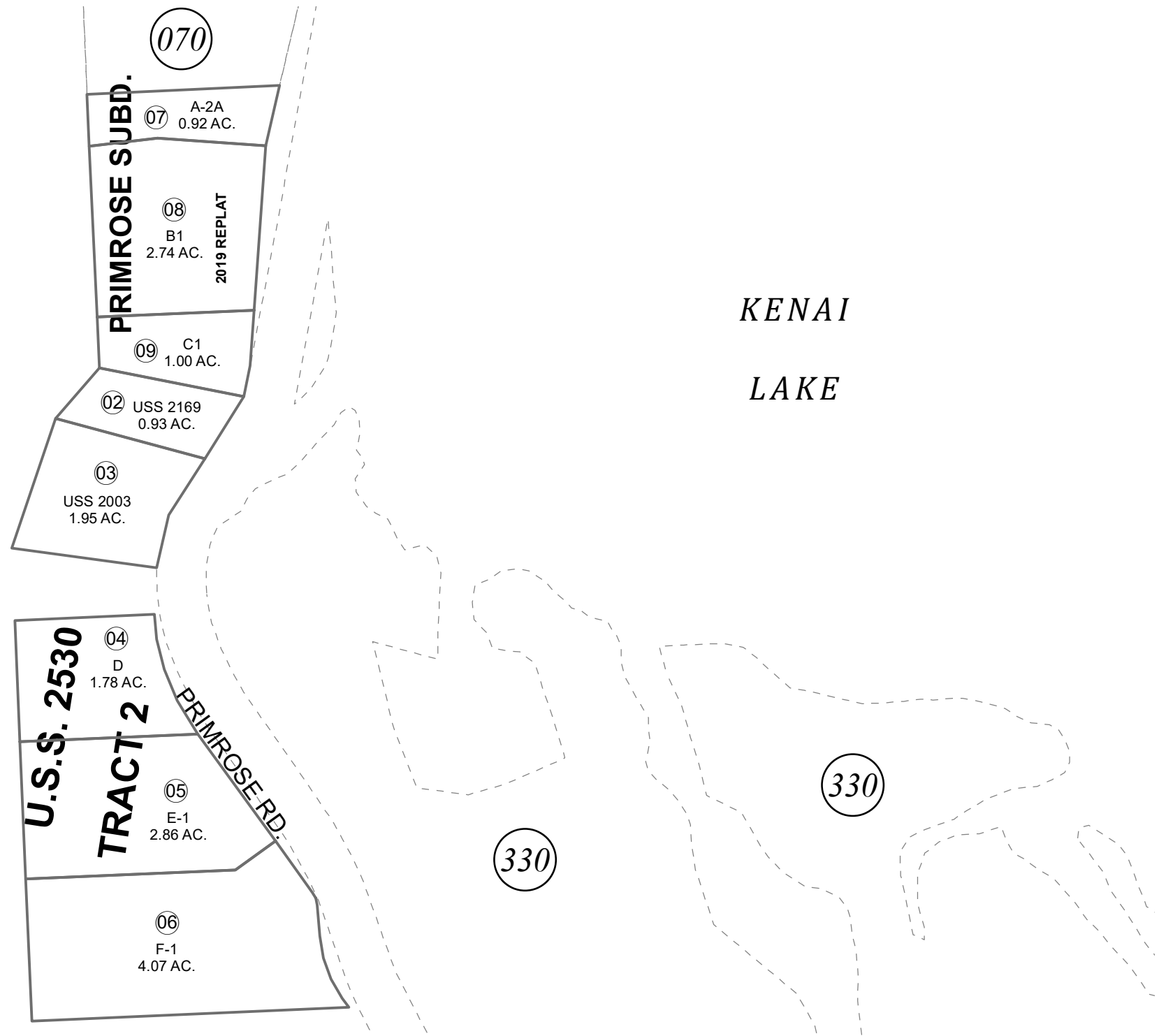


24

330



0 75 150 300 Feet

JANUARY 14, 2020

For 2020 assessment roll		
Delete	Add	Revise
	To	
01, 07005, 07007	07-09	

Assessor's Map  
Kenai Peninsula Borough

US SURVEY 2003 SW0002003  
 US SURVEY 2169 SW0002169  
 US SURVEY 2530 SW0002530  
 US SURVEY 2530 RESUB LOTS E & F SW0970020  
 PRIMROSE SUB 2019 REPLAT SW2019014

Note- Assessor's block Numbers Shown in Ellipses  
 Assessor's Parcel Numbers Shown in Circles

This map is prepared  
 for Kenai Peninsula  
 Borough Assessing Dept.  
 use only and is not  
 intended for conveyance  
 nor is it a survey.