

SEC. 1,2,3,10,11,12, T6N, R11W, S.B.&M.

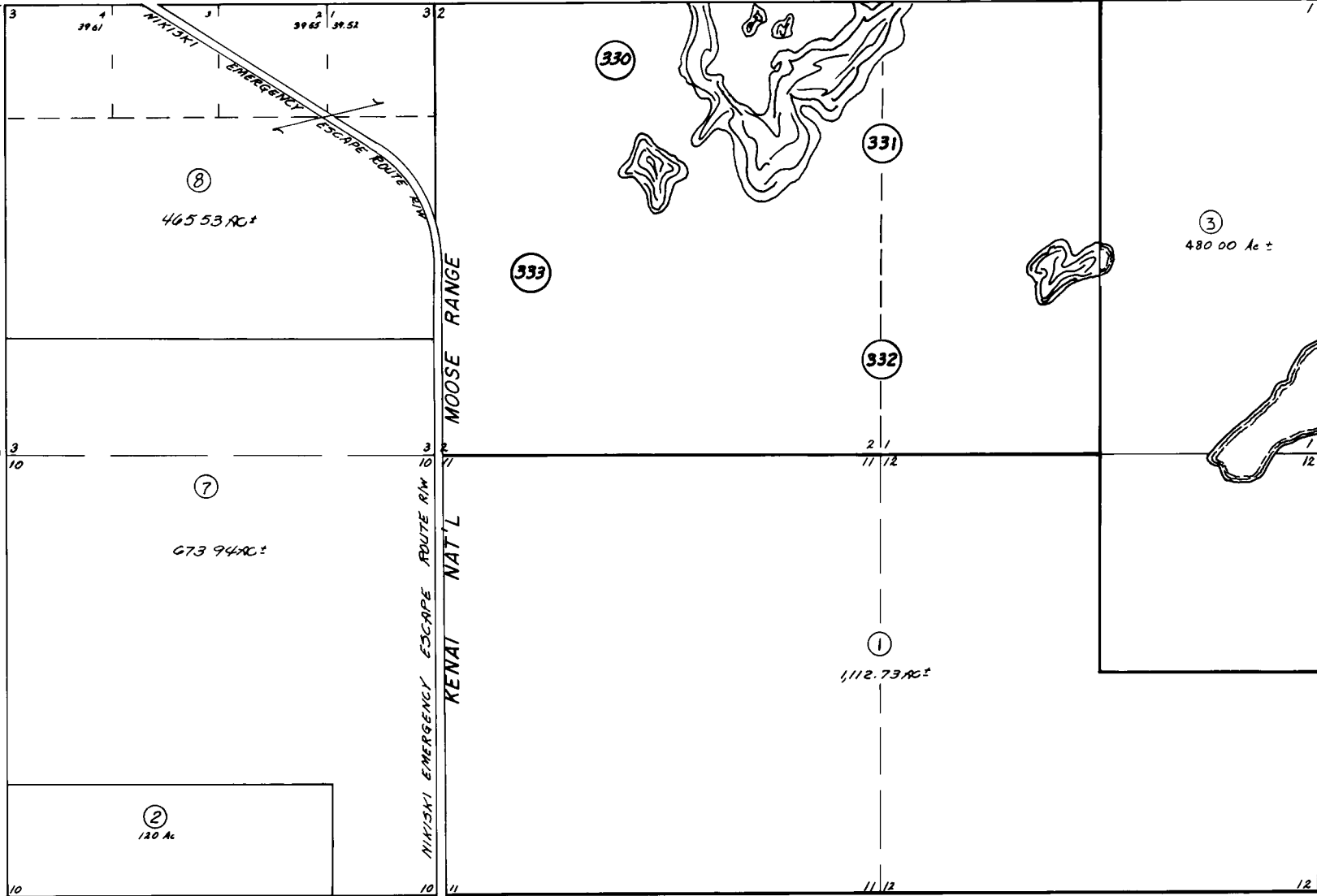
BOOK
13

17-09

329

R11W
R10W

T7N
T6N



Assessor's Map
Kenai Peninsula Borough, Alaska

22

NOTE - Assessor's Block Numbers Shown in Ellipses
Assessor's Parcel Numbers Shown in Circles